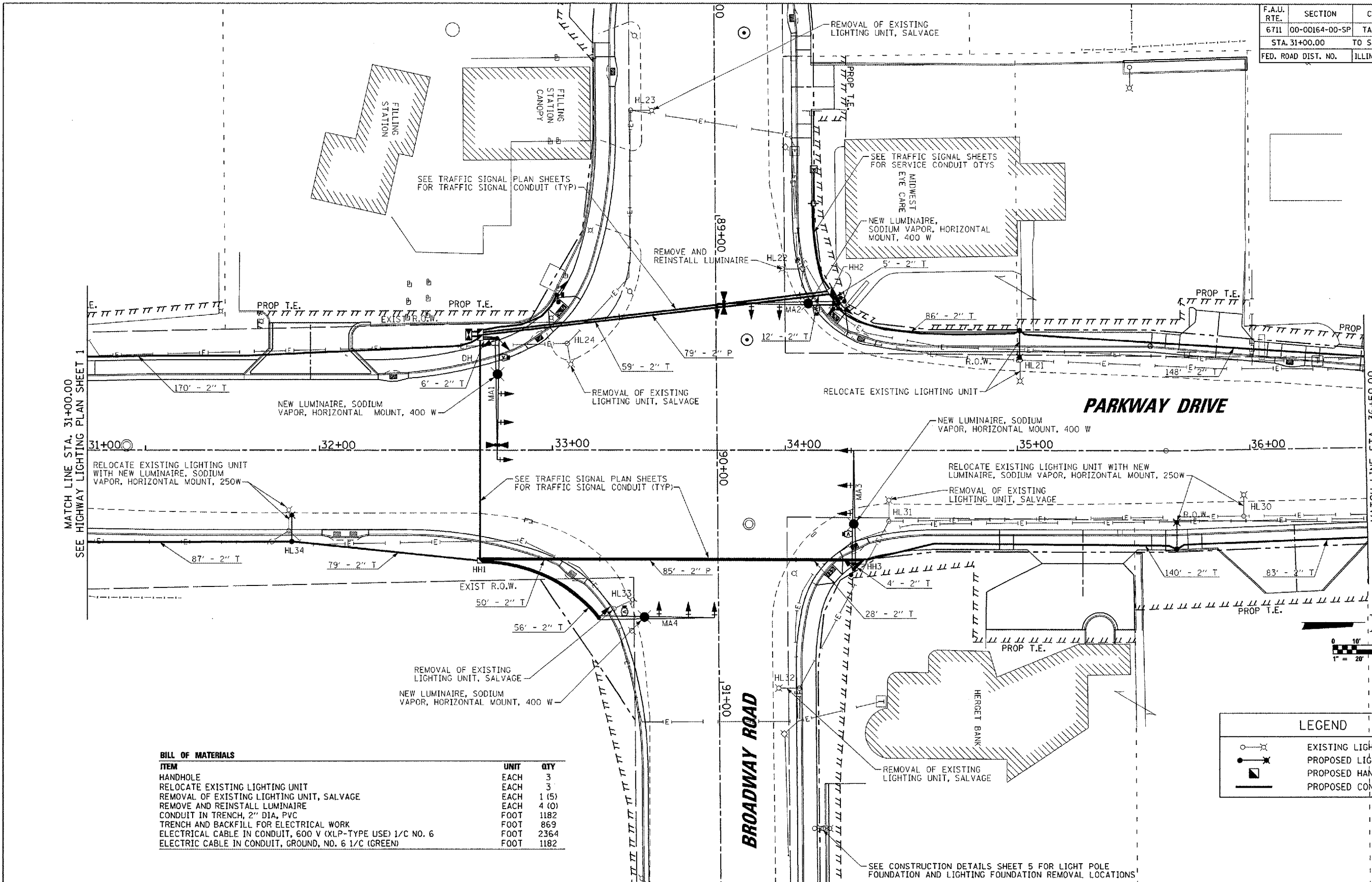


F.A.U. RTE.	SECTION	COUNTY	TOTAL SHEETS	SHEET NO.
6711	00-00164-00-SP	TAZEWELL	80	45
STA. 31+00.00		TO STA. 36+50.00		
FED. ROAD DIST. NO.	ILLINOIS		FED. AID PROJECT	



BILL OF MATERIALS

ITEM	UNIT	QTY
HANDHOLE	EACH	3
RELOCATE EXISTING LIGHTING UNIT	EACH	3
REMOVAL OF EXISTING LIGHTING UNIT, SALVAGE	EACH	1 (5)
REMOVE AND REINSTALL LUMINAIRE	EACH	4 (0)
CONDUIT IN TRENCH, 2" DIA, PVC	FOOT	1182
TRENCH AND BACKFILL FOR ELECTRICAL WORK	FOOT	869
ELECTRICAL CABLE IN CONDUIT, 600 V (XLP-TYPE USE) 1/C NO. 6	FOOT	2364
ELECTRIC CABLE IN CONDUIT, GROUND, NO. 6 1/C (GREEN)	FOOT	1182

LEGEND

	EXISTING LIGHT POLE
	PROPOSED LIGHT POLE
	PROPOSED HANDHOLE
	PROPOSED CONDUIT

