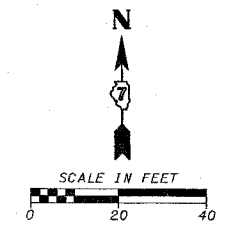
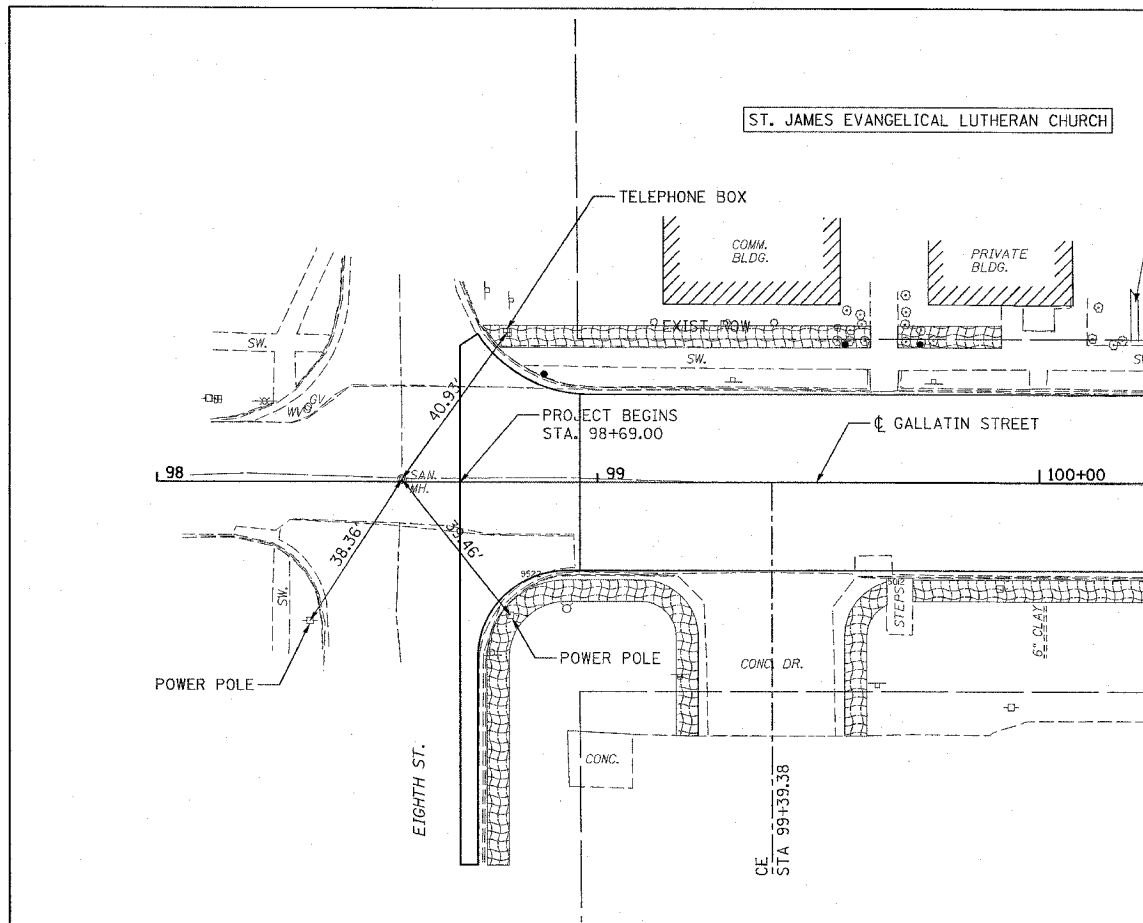
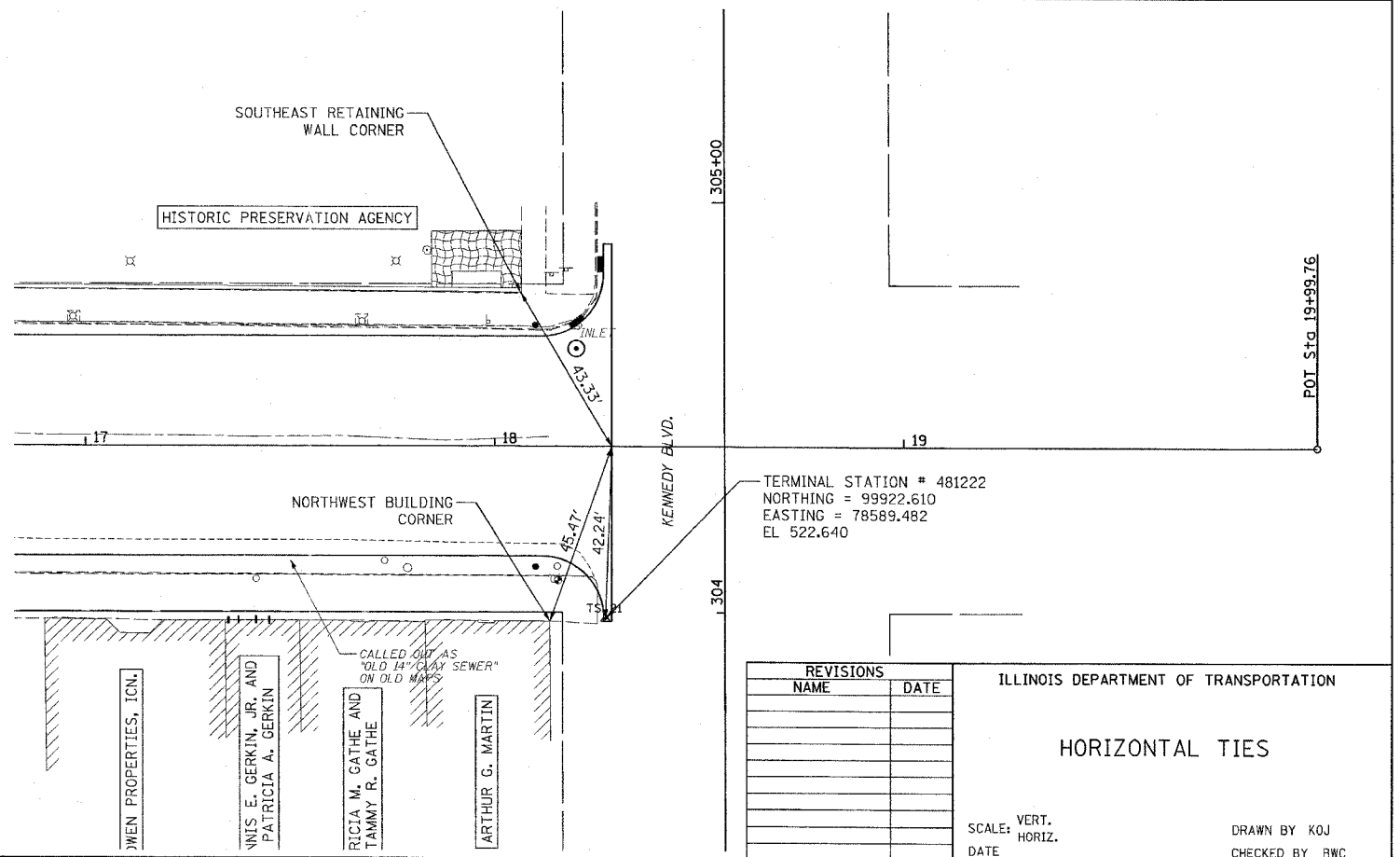
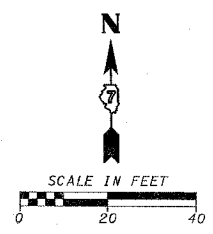
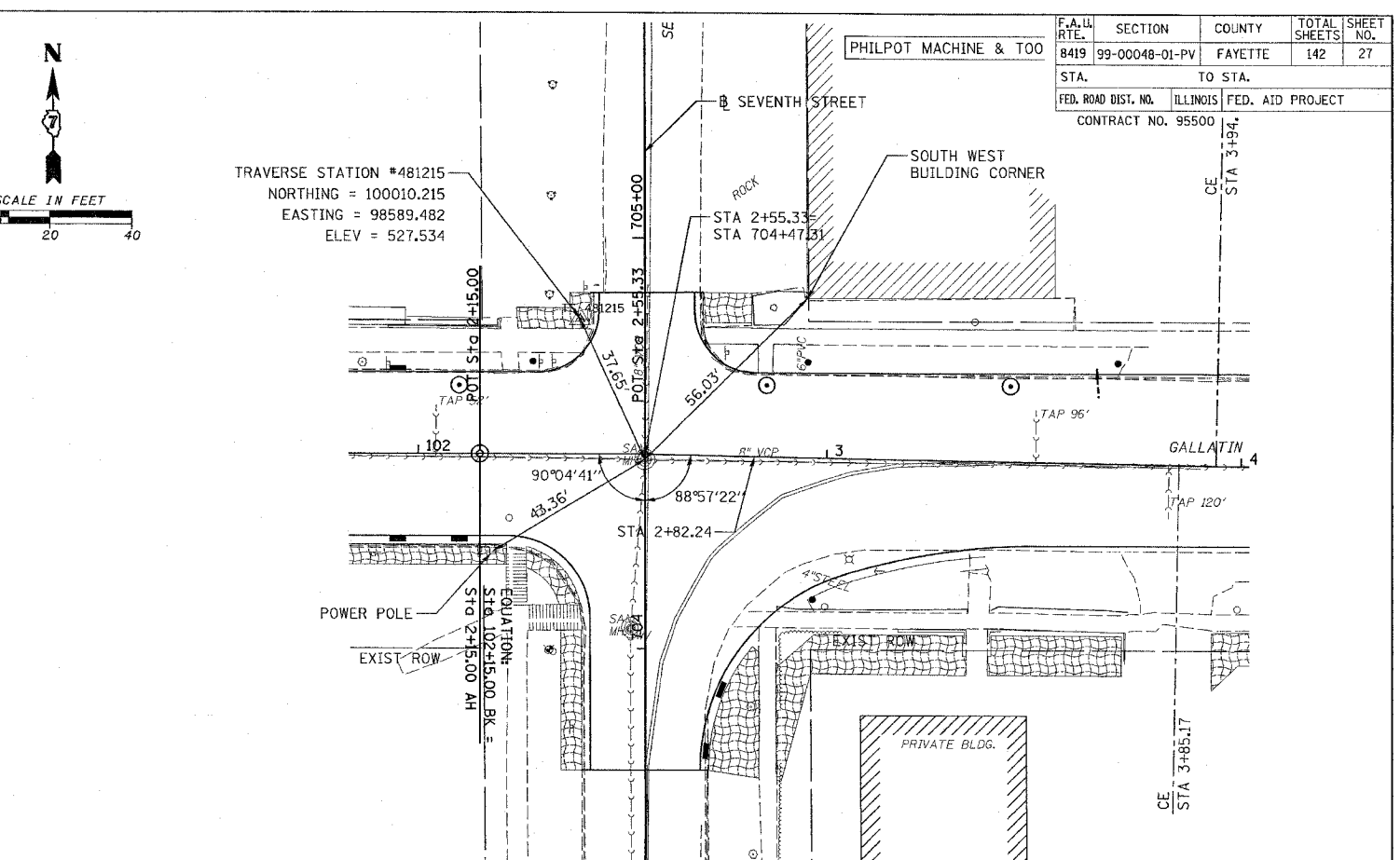


F.A.L. RTE.	SECTION	COUNTY	TOTAL SHEETS	SHEET NO.
8419	99-00048-01-PV	FAYETTE	142	27
STA.		TO STA.		
FED. ROAD DIST. NO.		ILLINOIS	FED. AID PROJECT	
CONTRACT NO. 95500				



TRAVERSE STATION #481215  
 NORTHING = 100010.215  
 EASTING = 98589.482  
 ELEV = 527.534



REVISIONS	
NAME	DATE

ILLINOIS DEPARTMENT OF TRANSPORTATION  
**HORIZONTAL TIES**  
 SCALE: VERT. \_\_\_\_\_  
 DATE \_\_\_\_\_  
 DRAWN BY KOJ  
 CHECKED BY BWC

CADD FILE: 74812/11bPis.dgn  
 PLOTTED: 01/23/2007

H.M. & G. INC. 4812