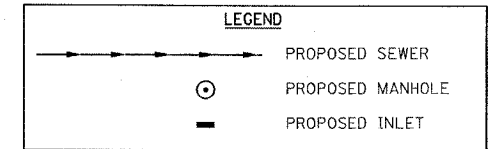
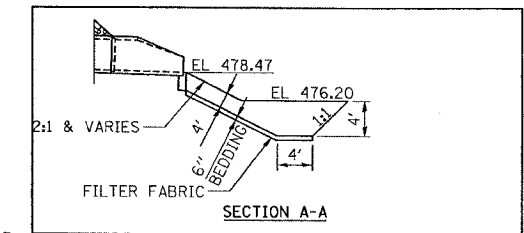
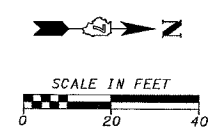
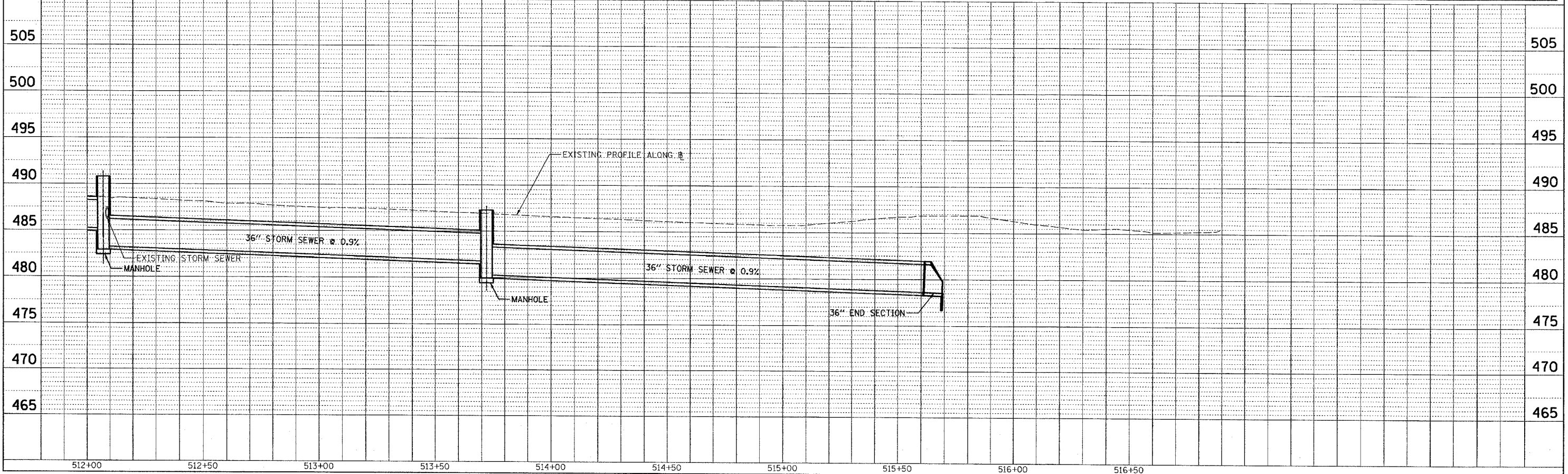
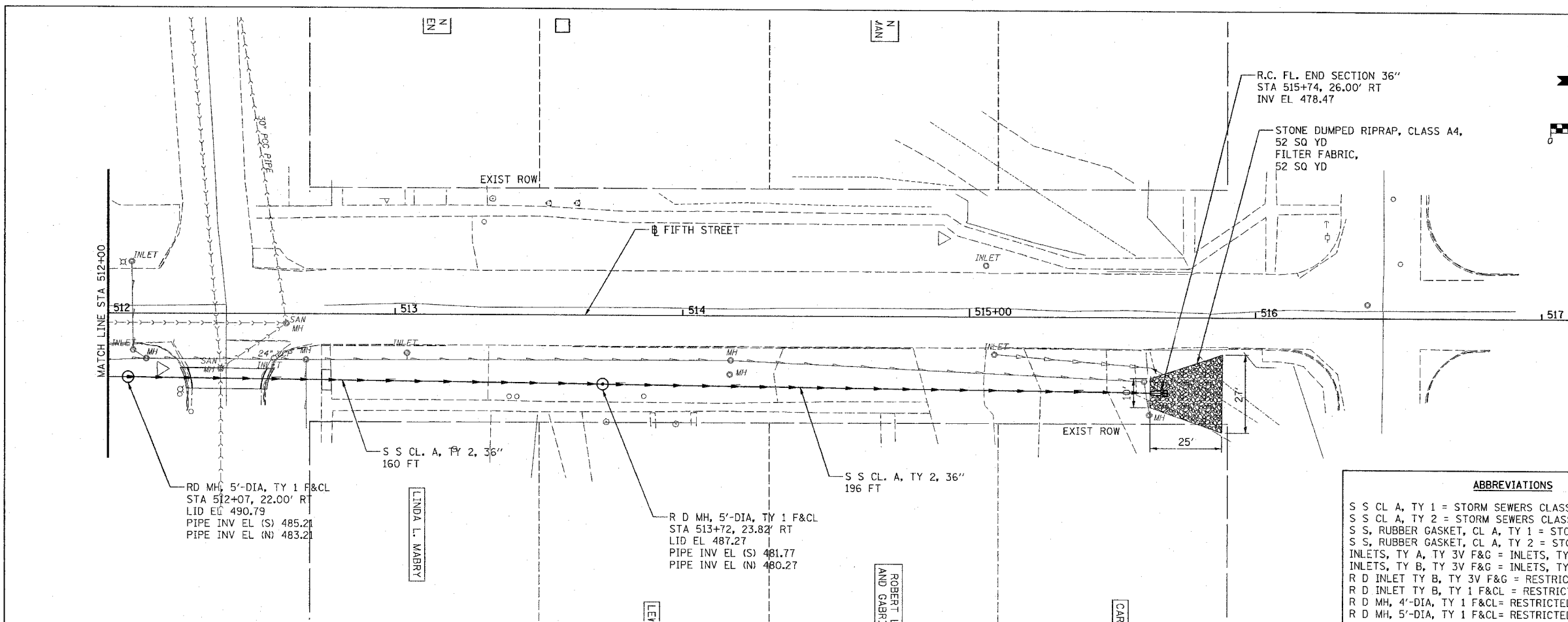


|                     |                |                  |              |           |
|---------------------|----------------|------------------|--------------|-----------|
| F.A.U. RTE.         | SECTION        | COUNTY           | TOTAL SHEETS | SHEET NO. |
| 8419                | 99-00048-01-PV | FAYETTE          | 142          | 56        |
| STA.                | TO STA.        |                  |              |           |
| FED. ROAD DIST. NO. | ILLINOIS       | FED. AID PROJECT |              |           |
| CONTRACT NO. 95500  |                |                  |              |           |



- ABBREVIATIONS**
- S S CL A, TY 1 = STORM SEWERS CLASS A, TYPE 1
  - S S CL A, TY 2 = STORM SEWERS CLASS A, TYPE 2
  - S S, RUBBER GASKET, CL A, TY 1 = STORM SEWERS, RUBBER GASKET, CLASS A, TYPE 1
  - S S, RUBBER GASKET, CL A, TY 2 = STORM SEWERS, RUBBER GASKET, CLASS A, TYPE 2
  - INLETS, TY A, TY 3V F&G = INLETS, TYPE A, TYPE 3V FRAME AND GRATE
  - INLETS, TY B, TY 3V F&G = INLETS, TYPE B, TYPE 3V FRAME AND GRATE
  - R D INLET TY B, TY 3V F&G = RESTRICTED DEPTH INLET TYPE B, TYPE 3V FRAME AND GRATE
  - R D INLET TY B, TY 1 F&CL = RESTRICTED DEPTH INLET TYPE B, TYPE 1 FRAME AND CLOSED LID
  - R D MH, 4'-DIA, TY 1 F&CL = RESTRICTED DEPTH MANHOLE, 4'-DIAMETER, TYPE 1 FRAME AND CLOSED LID
  - R D MH, 5'-DIA, TY 1 F&CL = RESTRICTED DEPTH MANHOLE, 5'-DIAMETER, TYPE 1 FRAME AND CLOSED LID



|      |          |      |
|------|----------|------|
| PLAN | SURVEYED | DATE |
|      | BY       |      |
|      | NOTED    |      |
|      | CHECKED  |      |
|      | DATE     |      |

|         |          |      |
|---------|----------|------|
| PROFILE | SURVEYED | DATE |
|         | BY       |      |
|         | NOTED    |      |
|         | CHECKED  |      |
|         | DATE     |      |

CADD FILE: 14812/SS-Fifth.03.dgn  
PLOTTED: 01/23/2007