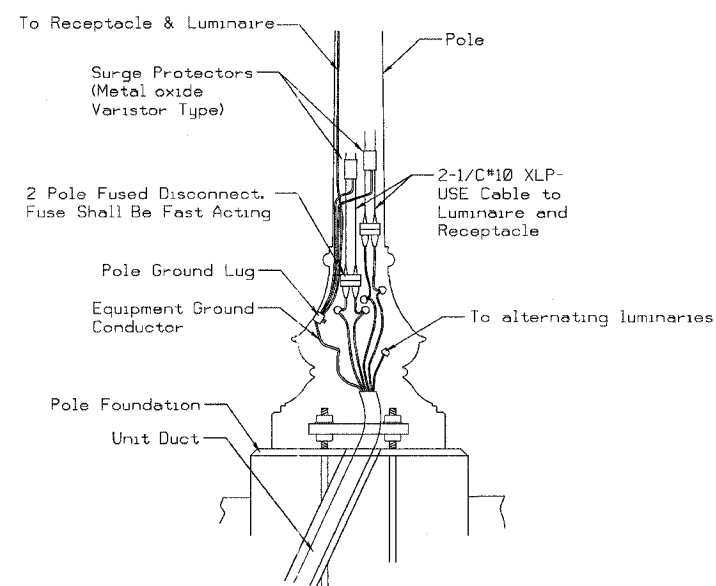


F.A. U. R.T.E.	SECTION	COUNTY	TOTAL SHEETS	SHEET NO.
8419	99-00048-01-PV	FAYETTE	142	98a
STA.		TO STA.		
FED. ROAD DIST. NO.		ILLINOIS	FED. AID PROJECT	
CONTRACT NO. 95500				

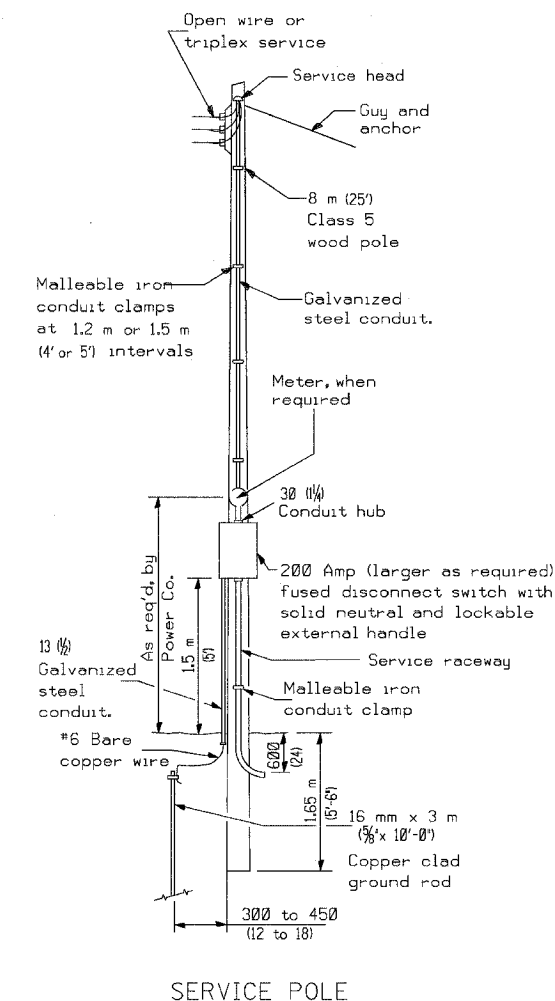
CONCRETE FOUNDATION				
LIGHT POLE MOUNTING HEIGHT	BOLT CIRCLE DIAMETER	SHAFT DIAMETER	SHAFT DEPTH	ANCHOR ROD LENGTH (1)
9.1 m (30')	406 (16)	762 (30)	1.83 m (6'-0")	1.75 m (5'-9")

(1) Length does not include 100 (4) hook

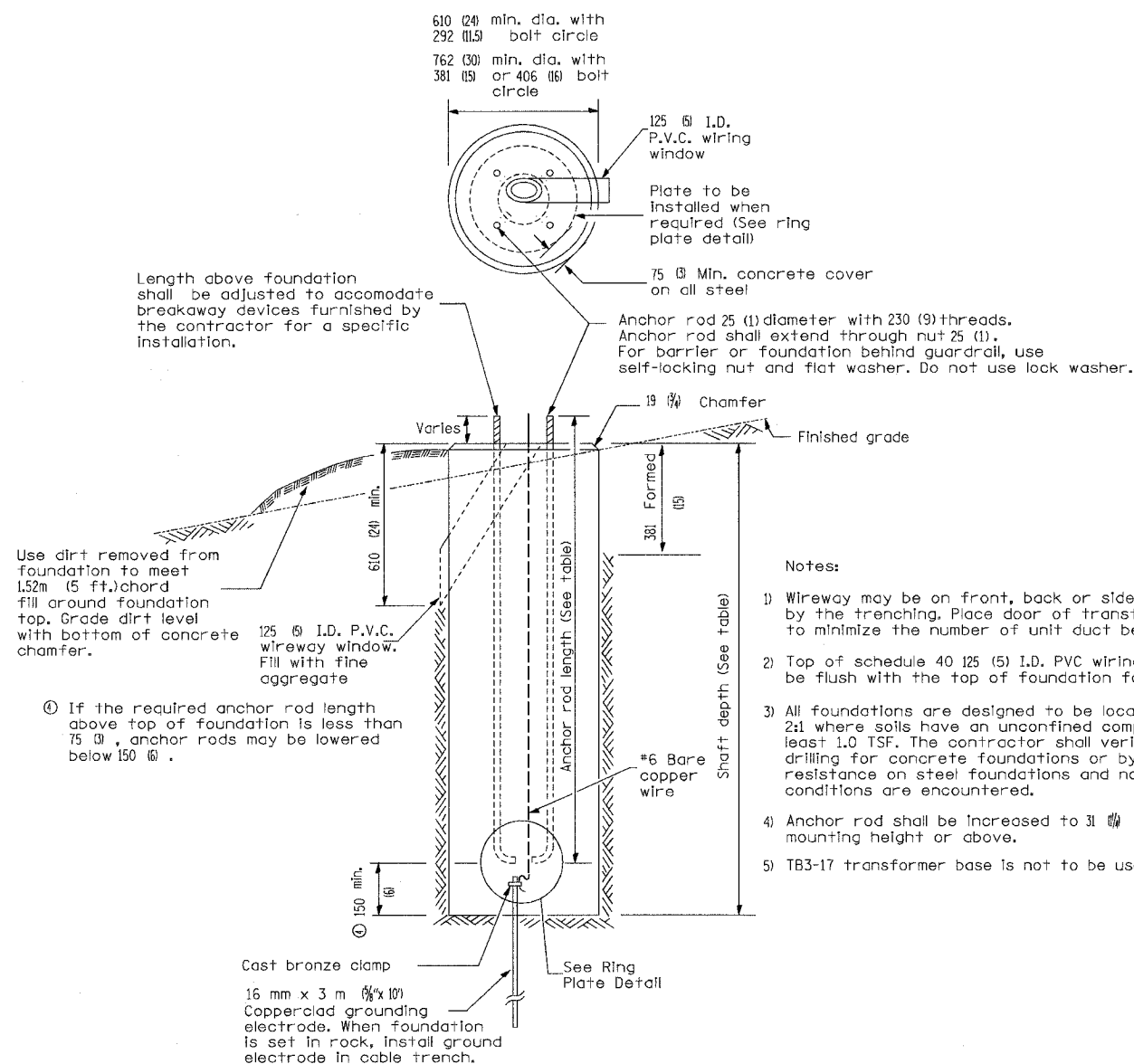


POLE BASE MOUNTING & WIRING

- Neutral pole of fused disconnect shall have an insert.
- Receptacle circuit (not shown) shall be connected in similar fashion, using fused disconnect with an insert.
- Circuit Continuation not shown for clarity.



SERVICE POLE



CONCRETE FOUNDATION

TYPE A (SPECIAL)

Notes:

- Wireway may be on front, back or side of foundation as required by the trenching. Place door of transformer base on wireway side to minimize the number of unit duct bends.
- Top of schedule 40 125 (5) I.D. PVC wiring window, shall be flush with the top of foundation for drainage.
- All foundations are designed to be located on slopes not exceeding 2:1 where soils have an unconfined compressive strength of at least 1.0 TSF. The contractor shall verify the soil strength during drilling for concrete foundations or by monitoring installation resistance on steel foundations and notify the engineer if other conditions are encountered.
- Anchor rod shall be increased to 31 (1 1/4) diameter for 15.24 (50') mounting height or above.
- TB3-17 transformer base is not to be used on metal foundation

REVISIONS	
NAME	DATE
DLD	4-13-07
DLD	5-09-07

ILLINOIS DEPARTMENT OF TRANSPORTATION

LIGHTING DETAILS

SCALE: VERT. HORIZ. DATE

DRAWN BY KOJ CHECKED BY BWC