

ROUTE	SECTION	COUNTY	TOTAL SHEETS	SHEET NO.
T.R. 206	05-02121-00-BR	JASPER	13	1
FOX ROAD DISTRICT		ILLINOIS	PROJECT BROS-079(134)	

STATE OF ILLINOIS  
DEPARTMENT OF TRANSPORTATION  
DIVISION OF HIGHWAYS  
PLANS FOR PROPOSED  
HIGHWAY BRIDGE PROGRAM  
SECTION 05-02121-00-BR JASPER COUNTY  
PROJECT BROS-079(134)  
JOB NO. C-97-061-07  
FOX ROAD DISTRICT  
T.R. 206

CONTRACT NO. 95511

Joint Utility Locating Information for Excavators  
JULIE 1-800-892-0123

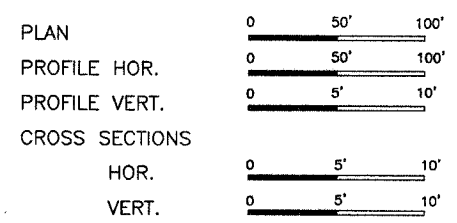
INDEX OF SHEETS

SHEET	ITEM
1	COVER SHEET
2	SUMMARY OF QUANTITIES
3	ROADWAY PLAN AND PROFILE
4	GENERAL PLAN AND ELEVATION
5	STANDARD CS-2733-75L
6	STANDARD CB-2733-36
7	STANDARD CA-2733-30
8	STANDARD CR-TS1
9	STANDARD CN
10	STANDARD CX-1
11-13	CROSS SECTIONS

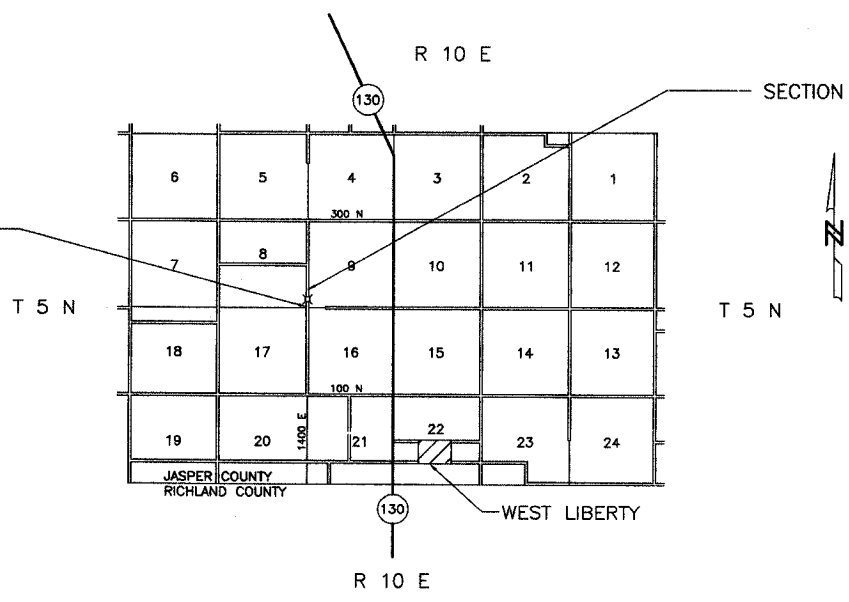
STANDARD DRAWINGS

STANDARD 000001-04
STANDARD 280001-03
STANDARD 702001-06
STANDARD BLR 21-6
STANDARD BLR 22-4



SECTION 05-02121-00-BR BEGINS STA. 0+50.00

SINGLE SPAN PRECAST PRESTRESSED CONCRETE-DECK BEAM BRIDGE  
76'-6" BK. - BK. ABUTMENTS  
STEEL PILE / SPILLTHROUGH ABUTMENTS  
27' DECK  
30' SKEW  
EXISTING STRUCTURE NO. 040-3098  
PROPOSED STRUCTURE NO. 040-3255



SECTION 05-02121-00-BR ENDS STA. 7+50.00

FUNCTIONAL CLASSIFICATION - LOCAL ROAD  
ADT = 75  
DESIGN SPEED = 30 MPH

NET LENGTH SECTION 05-02121-00-BR = 700.00 Ft. = 0.132 Mi.



*Michael R. Bridges*  
4-3-2007  
Lic. Exp. 11-30-07

CHARLESTON ENGINEERING INC.  
105 N. KITCHELL  
P.O. BOX 397  
OLNEY, ILLINOIS 62450  
PH. 618-392-0736

APPROVED	<u>April 3 2007</u> <i>Richard D. Pattison</i> COUNTY ENGINEER
PASSED	<u>4/10 2007</u> <i>Maureen D. East</i> DISTRICT SEVEN ENGINEER OF LOCAL ROADS AND STREETS
Releasing For Bid Based on Limited Review	<u>4/10 2007</u> <i>Christina M. Reed</i> DEPUTY DIRECTOR OF HIGHWAYS REGION FOUR ENGINEER
STATE OF ILLINOIS DEPARTMENT OF TRANSPORTATION	