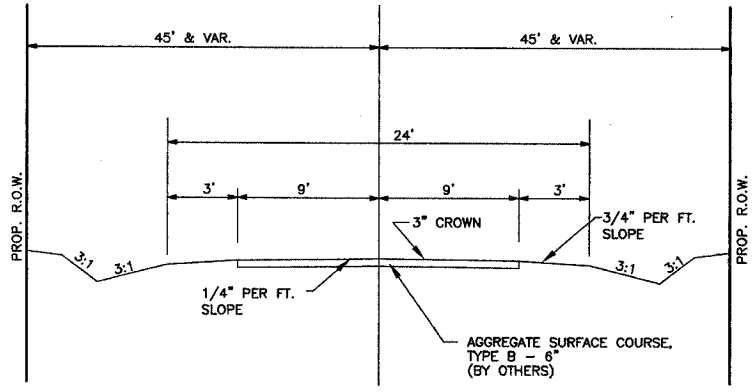


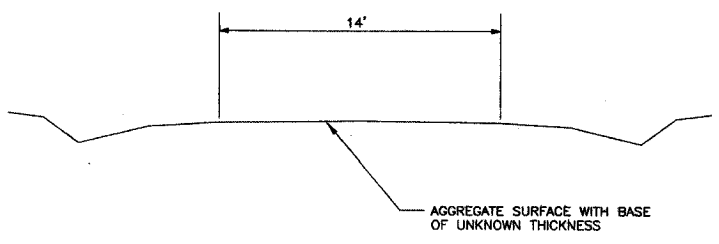
ROUTE	SECTION	COUNTY	TOTAL SHEETS	SHEET NO.
T.R. 206	05-02121-00-BR	JASPER	13	2
CONTRACT NO. 95511		ILLINOIS	PROJECT BROS-079(134)	

DESIGN DATA

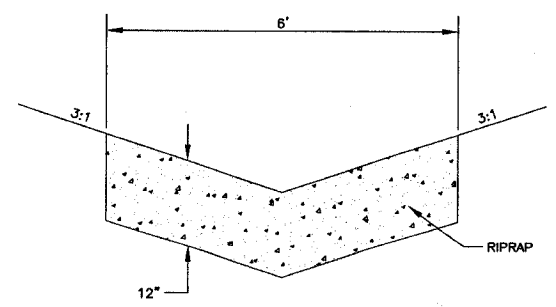
LOCAL ROAD
ADT = 75



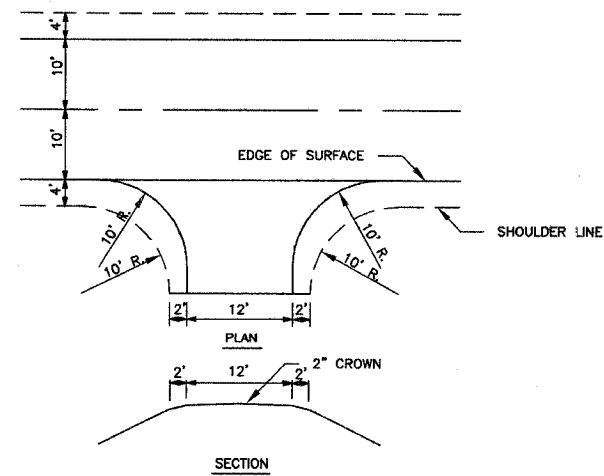
TYPICAL SECTION
PROPOSED



TYPICAL SECTION
EXISTING



STONE RIPRAP DITCH DETAIL
LT. STA. 2+50 TO 4+50



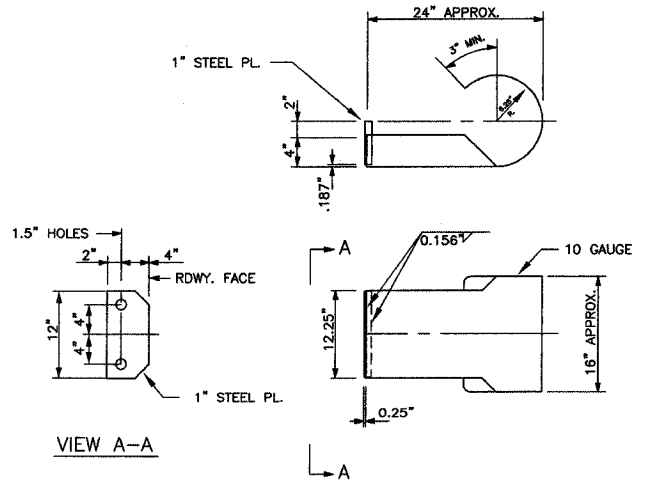
FIELD ENTRANCE DETAIL

GENERAL NOTES

- SEEDING: THIS WORK SHALL BE PERFORMED IN ACCORDANCE WITH THE APPLICABLE PORTIONS OF SECTION 250 OF THE STANDARD SPECIFICATIONS AND SHALL BE PAID FOR AT THE CONTRACT UNIT PRICE FOR SEEDING CLASS 2 (SPECIAL).
 - SPRING SEEDING SHALL EXTEND FROM JANUARY 1 TO JUNE 30
 - FALL SEEDING SHALL EXTEND FROM JULY 1 TO DECEMBER 31
 - FERTILIZER NUTRIENTS SHALL BE APPLIED AT THE RATE OF 100 LB/ACRE
 - MULCHING SHALL BE DONE IN ACCORDANCE WITH ARTICLE 251 OF THE STANDARD SPECIFICATIONS AND SHALL BE DONE BY METHOD 2, PROCEDURE 2 AT THE RATE OF 2 TONS PER ACRE.
- NO PAYMENT FOR OVERHAUL WILL BE MADE ON THIS SECTION.

SUMMARY OF QUANTITIES

CODE NO.	ITEM	UNIT	QUANTITY
20100110	TREE REMOVAL (6 TO 15 UNITS DIAMETER)	UNIT	179
20100210	TREE REMOVAL (OVER 15 UNITS DIAMETER)	UNIT	18
20200100	EARTH EXCAVATION	CU YD	235
20300100	CHANNEL EXCAVATION	CU YD	280
20400800	FURNISHED EXCAVATION	CU YD	2410
25001000	SEEDING, CLASS 2 (SPECIAL)	ACRE	0.95
28000300	TEMPORARY DITCH CHECKS	EACH	4
28000900	FENCE (EROSION CONTROL)	FOOT	280
28100807	STONE DUMPED RIPRAP, CLASS A4	TON	260
28102600	STONE RIPRAP DITCH	TON	65
35101400	AGGREGATE BASE COURSE, TYPE B	TON	60
50100100	REMOVAL OF EXISTING STRUCTURES	EACH	1
50300225	CONCRETE STRUCTURES	CU YD	24.8
50300280	CONCRETE ENCASEMENT	CU YD	2.6
50400605	PRECAST PRESTRESSED CONCRETE DECK BEAMS (33" DEPTH)	SQ FT	2025
50800105	REINFORCEMENT BARS	POUND	2980
50900205	STEEL RAILING, TYPE S1	FOOT	150
51201400	FURNISHING STEEL PILES HP 10X42	FOOT	315
51202305	DRIVING PILES	FOOT	315
51203400	TEST PILE STEEL HP 10X42	EACH	1
51500100	NAME PLATES	EACH	1
54200223	PIPE CULVERTS, CLASS D, TYPE 1 18"	FOOT	40
67100100	MOBILIZATION	L. SUM	1



CURLED END SECTION DETAILS
4 REQUIRED - COST INCLUDED IN "STEEL RAILING, TYPE S-1"