

211 N. Broadway
 Suite 1900
 St. Louis, MO 63102
 (314) 241-8188
 FAX (314) 241-0725



PHASE 2A
 LEWIS AND CLARK MEMORIAL TOWER
 VILLAGE OF HARTFORD, ILLINOIS
 HARTFORD, ILLINOIS 62049

SHEET TITLE
 SECTIONS & DETAILS

REV. NO.	DATE	REMARKS

These drawings are the property of SSE, Inc. They are furnished as contract documents only. Their use for reproductions for shop drawings is permitted, except for use as anchor setting plans, if approved by the Engineer, but at the users risk. The user shall remove all seals, firm names, titles, and sheet numbers, and shall assume full responsibility for their accuracy, completeness and status.

The seal(s) and signature(s) apply only to the document to which they are affixed, and expressly disclaim any responsibility for all other plans, specifications, estimates, reports or other documents or instruments relating to or intended to be used for any part or parts of the architectural or engineering project.

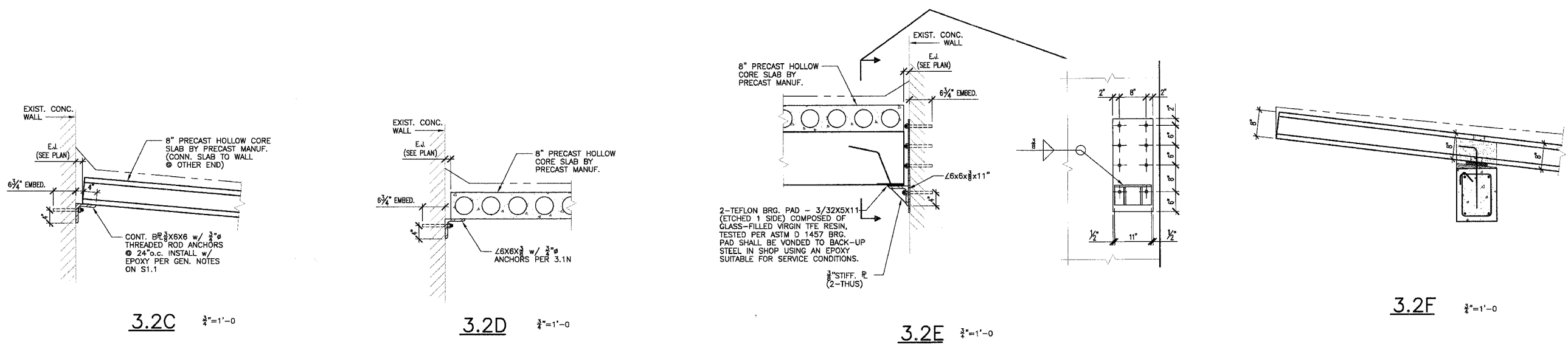
SSE PROJECT NO: 02111 PHASE 2A

KENNEDY PROJECT NO
 KAI# 10-02048

ISSUE DATE
 03-JUNE-05

SHEET NO
S3.2A

© 2005 KENNEDY ASSOCIATES INCORPORATED

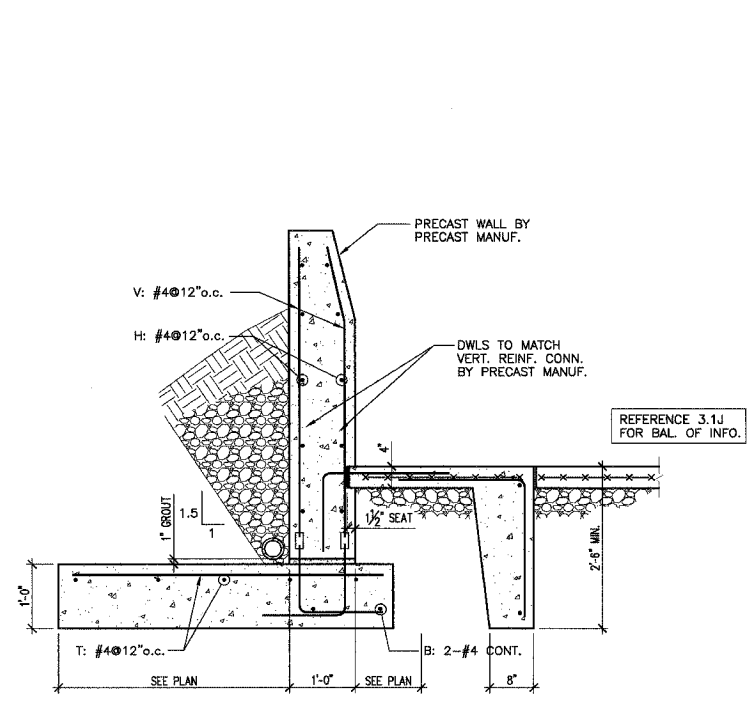


3.2C 3/4"=1'-0"

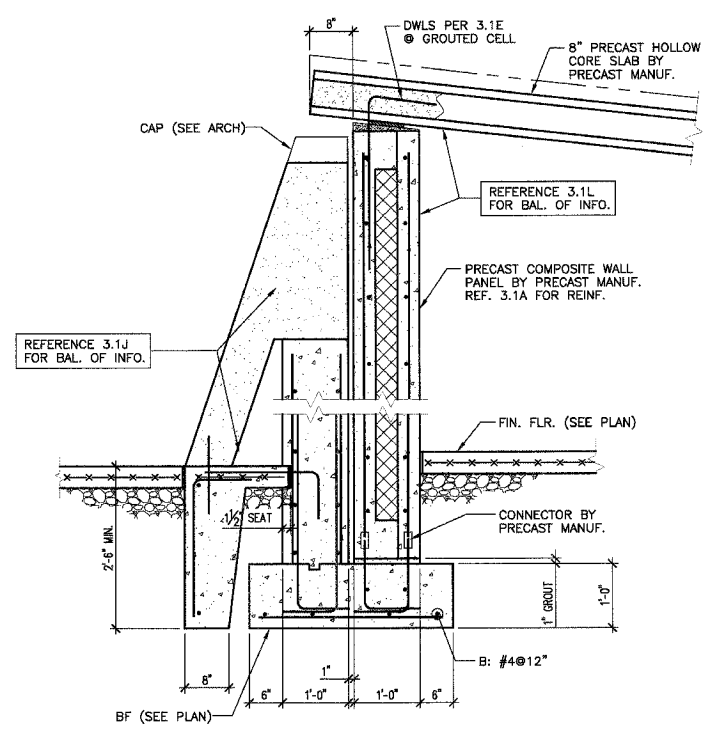
3.2D 3/4"=1'-0"

3.2E 3/4"=1'-0"

3.2F 3/4"=1'-0"



3.2A 3/4"=1'-0"



3.2B 3/4"=1'-0"

These drawings are the property of SSE, Inc. They are furnished as contract documents only. Their use for reproductions for shop drawings is permitted, except for use as anchor setting plans, if approved by the Engineer, but at the users risk. The user shall remove all seals, firm names, titles, and sheet numbers, and shall assume full responsibility for their accuracy, completeness and status.

The seal(s) and signature(s) apply only to the document to which they are affixed, and expressly disclaim any responsibility for all other plans, specifications, estimates, reports or other documents or instruments relating to or intended to be used for any part or parts of the architectural or engineering project.

SSE PROJECT NO: 02111 PHASE 2A