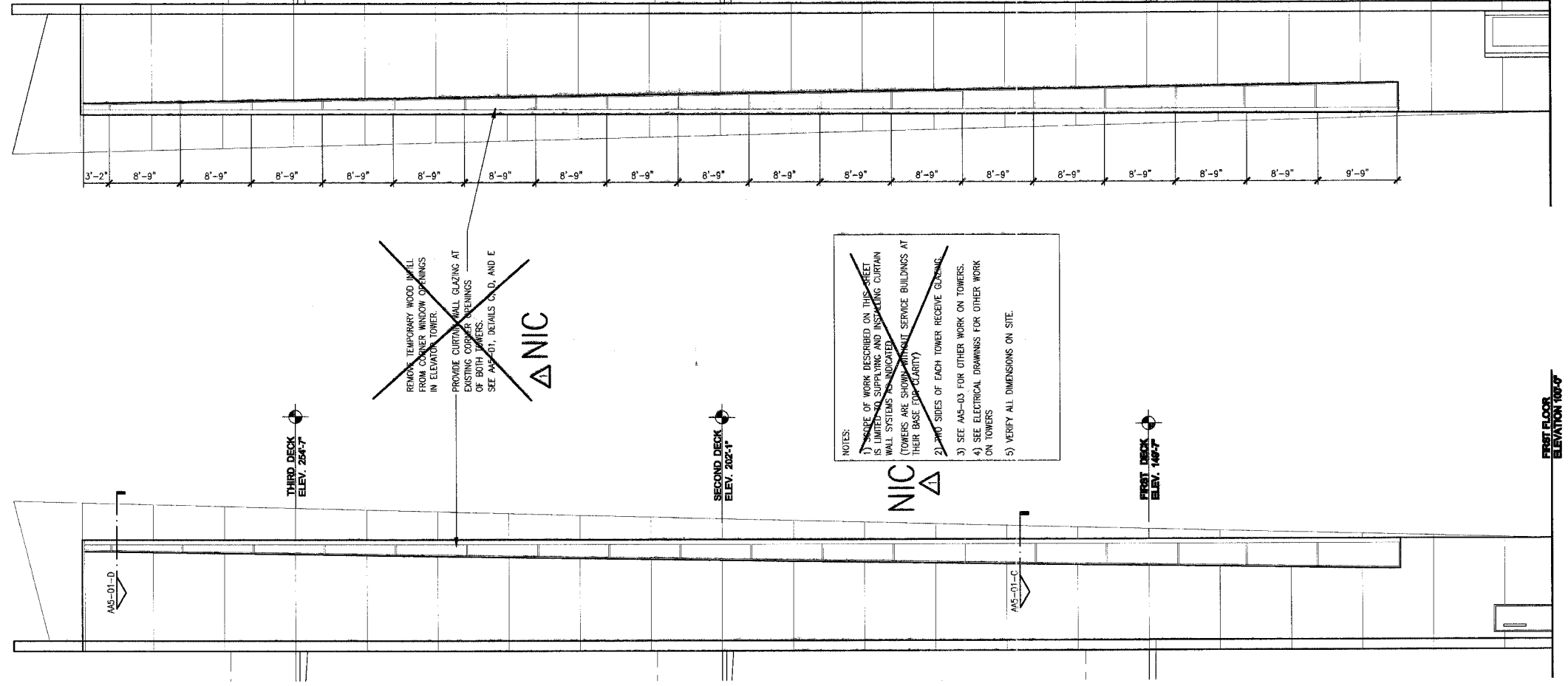


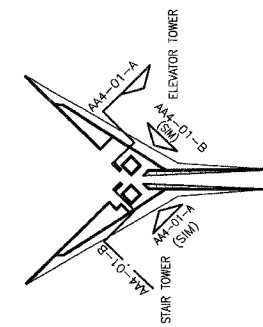
F.A. RTE.	SECTION	COUNTY	TOTAL SHEETS	SHEET NO.
	06-00026-01-MS	MADISON	43	17

FEDERAL AID PROJECT



~~REMOVE TEMPORARY WOOD INFILL FROM CORNER WINDOW OPENINGS IN ELEVATOR TOWER.  
PROVIDE CURTAIN WALL GLAZING AT EXISTING CORNER OPENINGS OF BOTH TOWERS.  
SEE AA-01, DETAILS C, D, AND E~~

~~NOTES:  
1) SCOPE OF WORK DESCRIBED ON THIS SHEET IS LIMITED TO SUPPLYING AND INSTALLING CURTAIN WALL SYSTEMS AS INDICATED (TOWERS ARE SHOWN WITHOUT SERVICE BUILDINGS AT THEIR BASE FOR CLARITY)  
2) BOTH SIDES OF EACH TOWER RECEIVE GLAZING.  
3) SEE AA-03 FOR OTHER WORK ON TOWERS.  
4) SEE ELECTRICAL DRAWINGS FOR OTHER WORK ON TOWERS  
5) VERIFY ALL DIMENSIONS ON SITE~~



**A** ELEVATOR TOWER ELEVATION (NORTHWEST)  
1/8"=1'-0"

**B** STAIR TOWER ELEVATION (SOUTHWEST)  
1/8"=1'-0"

KEY PLAN, N.T.S.

211 N. Broadway  
Suite 1000  
St. Louis, MO 63102  
(314) 241-9100  
FAX (314) 241-9128

**KAI**

**PHASE 2A  
LEWIS AND CLARK MEMORIAL TOWER  
VILLAGE OF HARTFORD, ILLINOIS**  
HARTFORD, ILLINOIS 62049

SHEET TITLE:  
**EXTERIOR TOWER  
ELEVATIONS**

REV. NO.	REMARKS	DATE
1	IDOT REV.	11/8/06

KENNEDY PROJECT NO  
**KAI# 10-02048**

ISSUE DATE  
**12-JULY-05**

SHEET NO

**AA4-01**