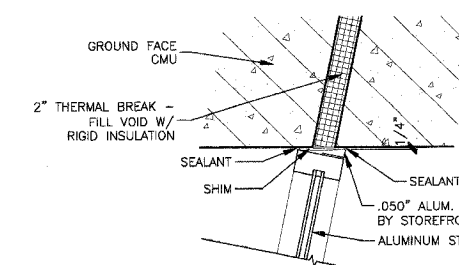


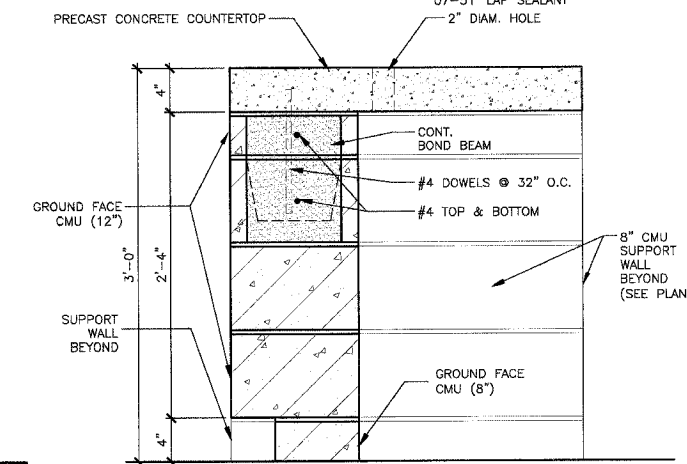
F.A. RTE.	SECTION	COUNTY	TOTAL SHEETS	SHEET NO.
06-00026-01-MS	MADISON		43	22

FEDERAL KEY PROJECT NOTES:

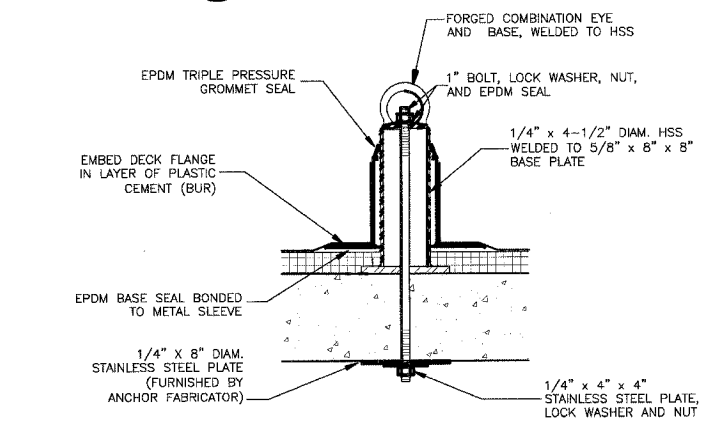
- 03-21 EXISTING PRECAST CONCRETE WALL
- 03-65 EXISTING PRECAST CONCRETE CONDUCTOR HEAD
- 05-54 #5 DOWELS
- 06-03 2 X TREATED WOOD BLOCKING
- 07-09 RIGID ROOF INSULATION
- 07-26 FLASHING
- 07-27 COUNTER FLASHING
- 07-28 EXTRUDED ALUMINUM COPING
- 07-37 ROOF HATCH
- 07-44 SEALANT
- 07-48 EPDM MEMBRANE
- 07-49 EPDM ROOFING
- 07-51 LAP SEALANT



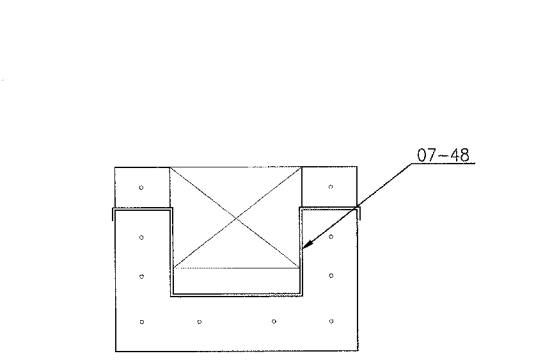
F PLAN DETAIL
1-1/2"=1'-0"
DETAIL BELOW COUNTER



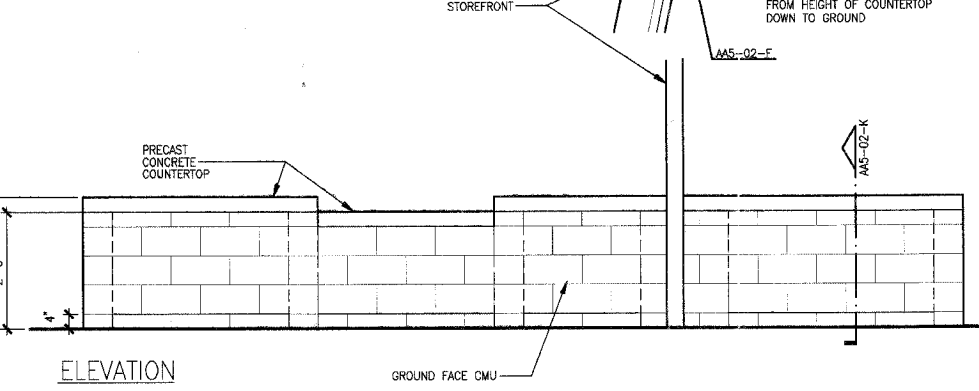
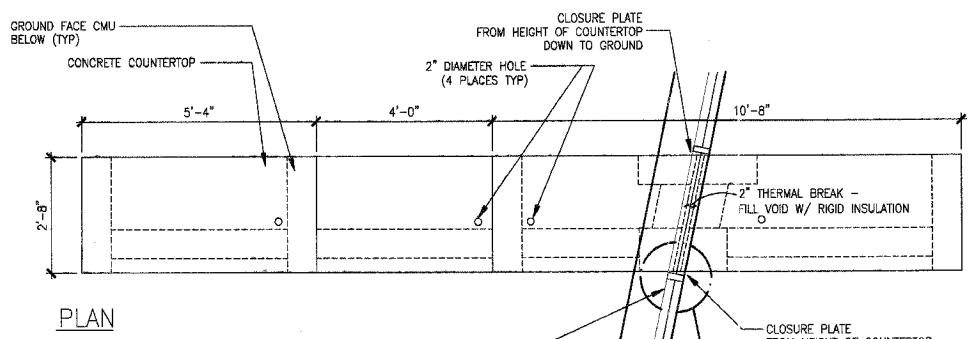
K SECTION THRU CONTROL DESK
1-1/2"=1'-0"



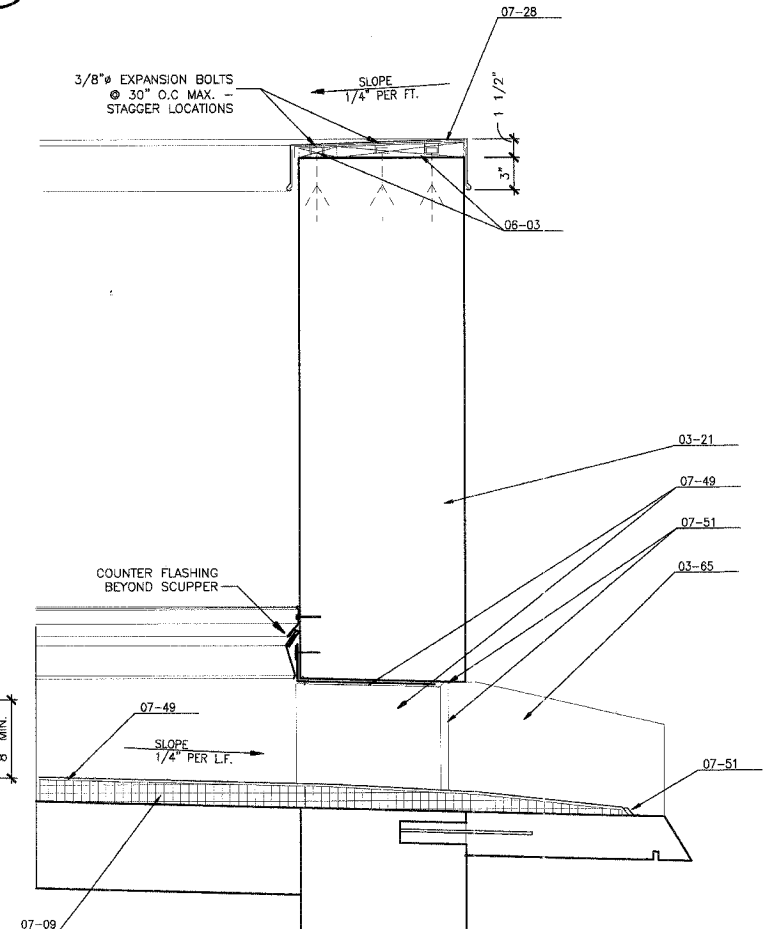
Q WINDOW WASHERS' ROOF ANCH
1-1/2"=1'-0"



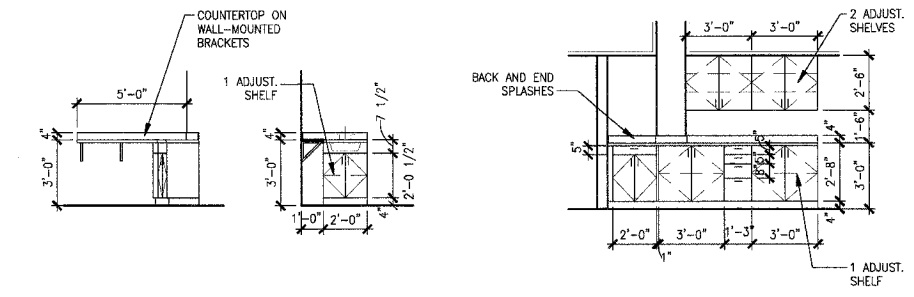
V SCUPPER ELEVATION
1-1/2"=1'-0"



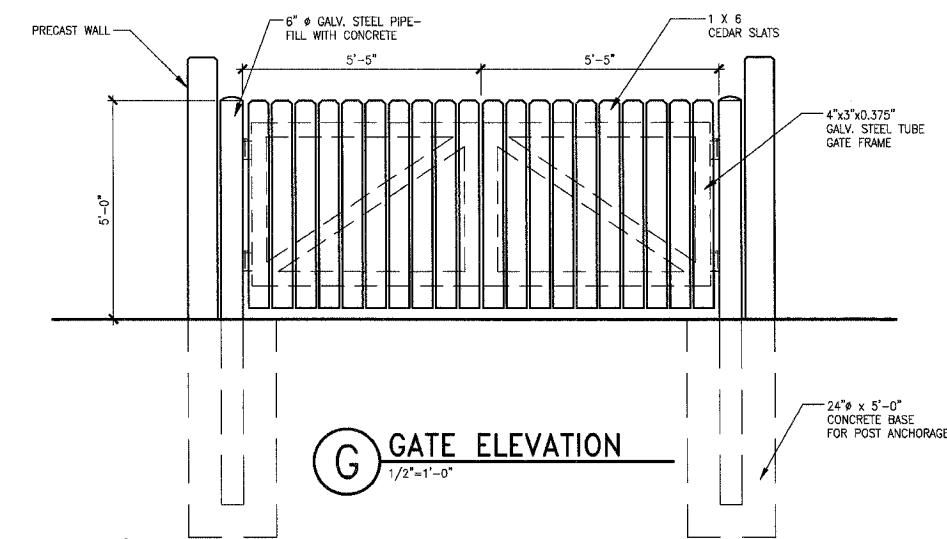
J COUNTER @ CONTROL DESK
1/2"=1'-0"



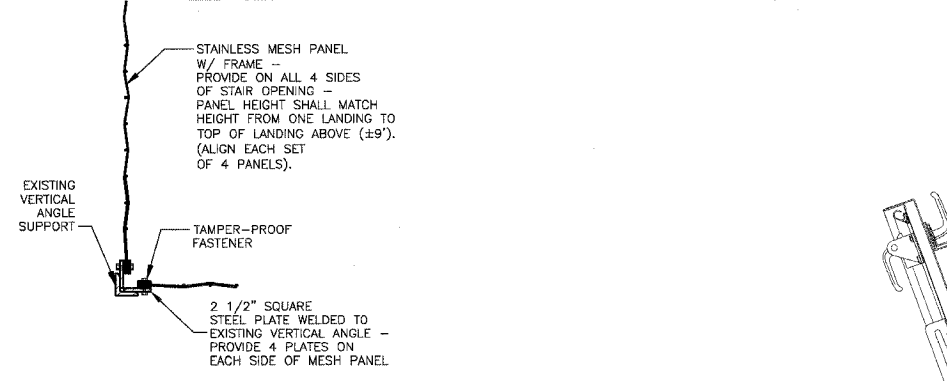
T SCUPPER / PARAPET DETAIL
1-1/2"=1'-0"



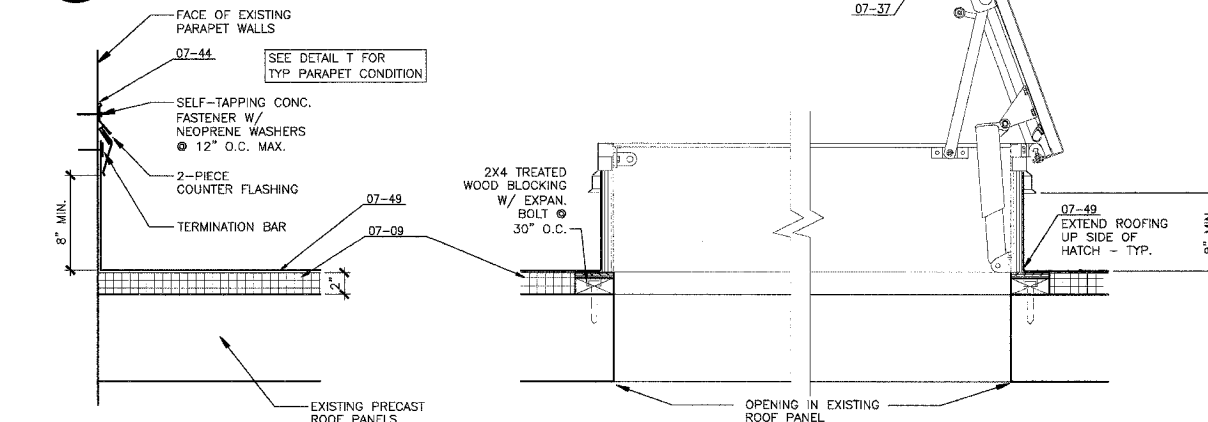
A ELEVATION @ VENDING 1/4"=1'-0"
B CABINETS @ CONTROL DESK 1/4"=1'-0"



G GATE ELEVATION
1/2"=1'-0"



L INFILL GUARD @ TOWER STAIR
1-1/2"=1'-0"



R ROOF DETAIL
1-1/2"=1'-0"

S ROOF HATCH DETAIL
1-1/2"=1'-0"

211 N. Broadway
Suite 1000
St. Louis, MO 63102
KAI
CALL 314-241-0188
FAX 314-241-0125

PHASE 2A
LEWIS AND CLARK MEMORIAL TOWER
VILLAGE OF HARTFORD, ILLINOIS
HARTFORD, ILLINOIS 62049

SHEET TITLE:
DETAILS

DATE	REMARKS

KENNEDY PROJECT NO KAI# 10-02048
ISSUE DATE 12-JULY-05
SHEET NO AA5-02