

F.A. RTE.	SECTION	COUNTY	TOTAL SHEETS	SHEET NO.
	03-00026-00-PK	MADISON	38	37

FEDERAL AID PROJECT

211 N. Broadway
Suite 1000
St. Louis, MO 63102
(314) 241-9100
FAX (314) 241-9125

KAI

**PHASE 2B
LEWIS AND CLARK MEMORIAL TOWER
VILLAGE OF HARTFORD, ILLINOIS
HARTFORD, ILLINOIS 62049**

SHEET TITLE:
**LANDING ELECTRICAL
PLANS**

REV. NO.	REMARKS	DATE

KENNEDY PROJECT NO
KAI# 10-02048

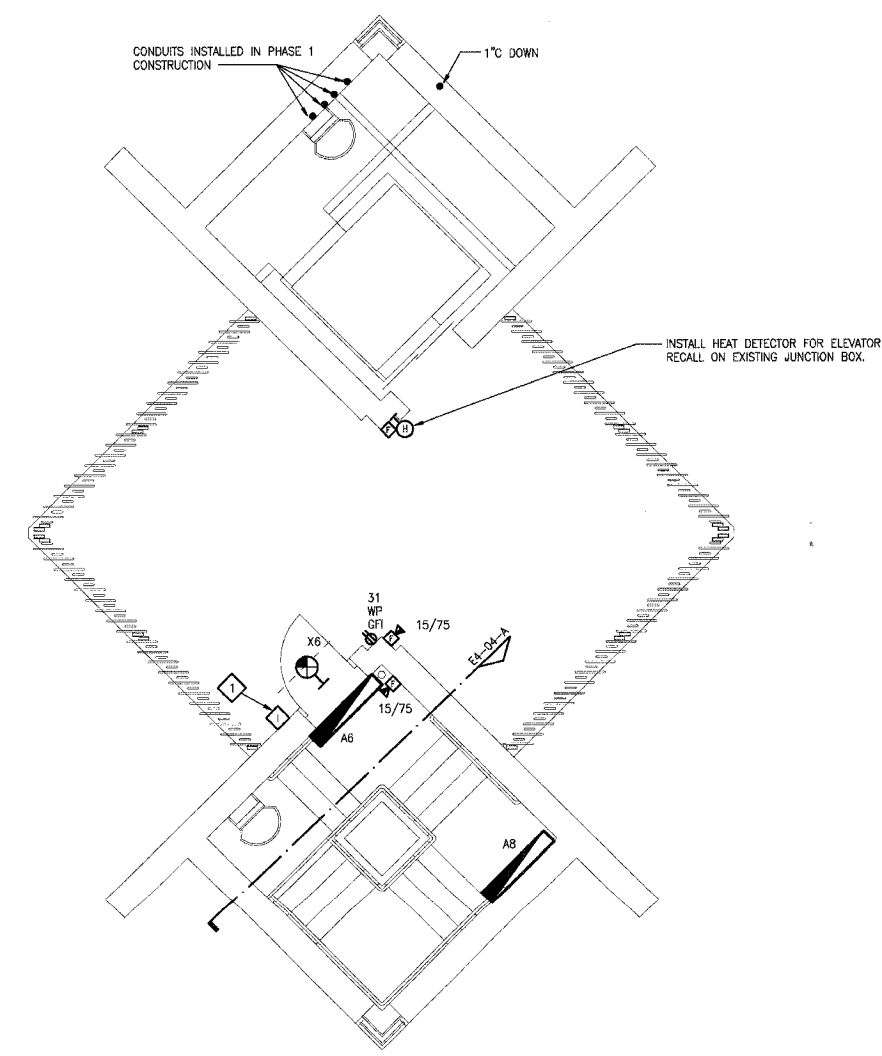
ISSUE DATE
12-JULY-05

SHEET NO
EA4-03

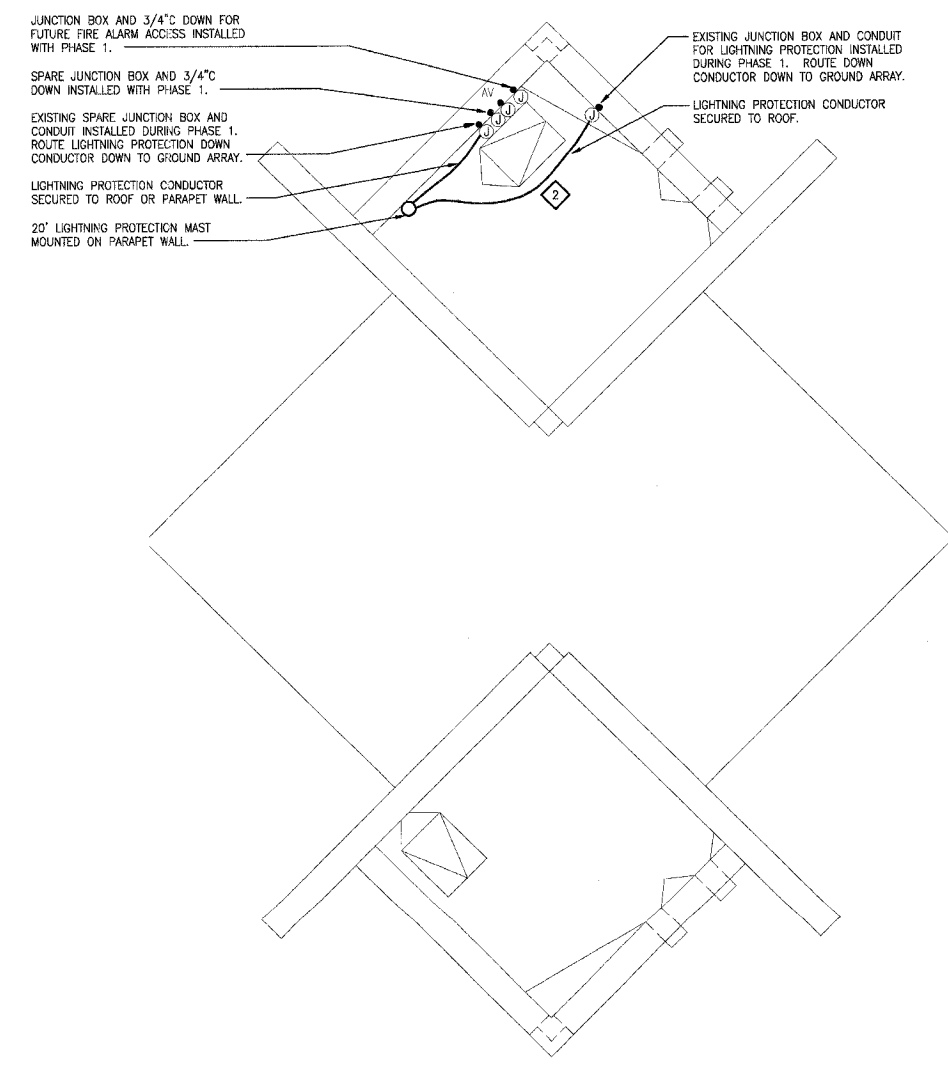
©2005 KENNEDY ASSOCIATES INCORPORATED

KEYED NOTES

- 1 E.C. SHALL FURNISH AND INSTALL ALPHONE LE-DA OUTDOOR WEATHERPROOF INTERCOM STATION WITH IN EXISTING ROUGH-IN INSTALLED DURING PHASE 1 CONSTRUCTION.
- 2 SEE DETAILS E AND F ON SHEET E6-01.



D THIRD LANDING ELECTRICAL PLAN
1/4"=1'-0"



C ROOF LANDING ELECTRICAL PLAN
1/4"=1'-0"

