

211 N. Broadway
St. Louis, MO 63102
KAI
241-9100
241-9102
FAX (314) 241-9125

KAI

**PHASE 2A
LEWIS AND CLARK MEMORIAL TOWER
VILLAGE OF HARTFORD, ILLINOIS
HARTFORD, ILLINOIS 62049**

ELECTRICAL DETAILS

REV. NO.	REMARKS	DATE

KENNEDY PROJECT NO
KAI# 10-02048

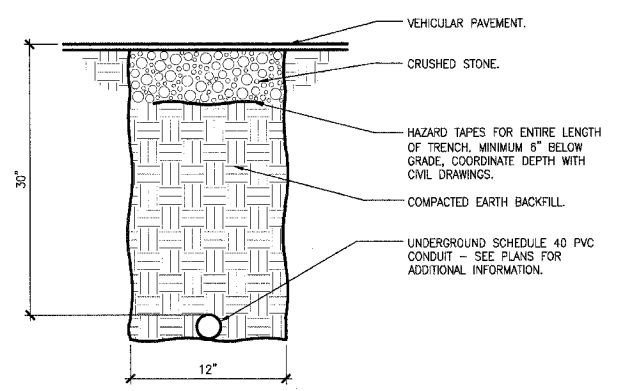
ISSUE DATE
12-JULY-05

SHEET NO

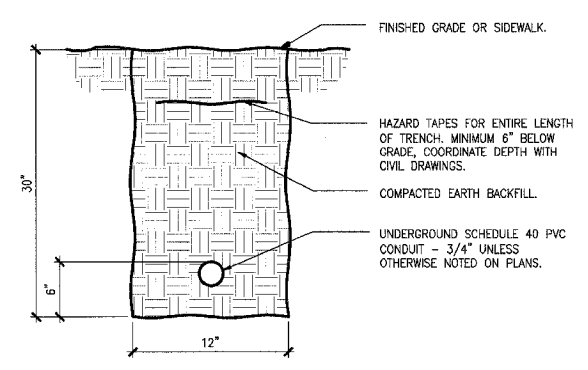
EA6-02

©2005 KENNEDY ASSOCIATES INCORPORATED

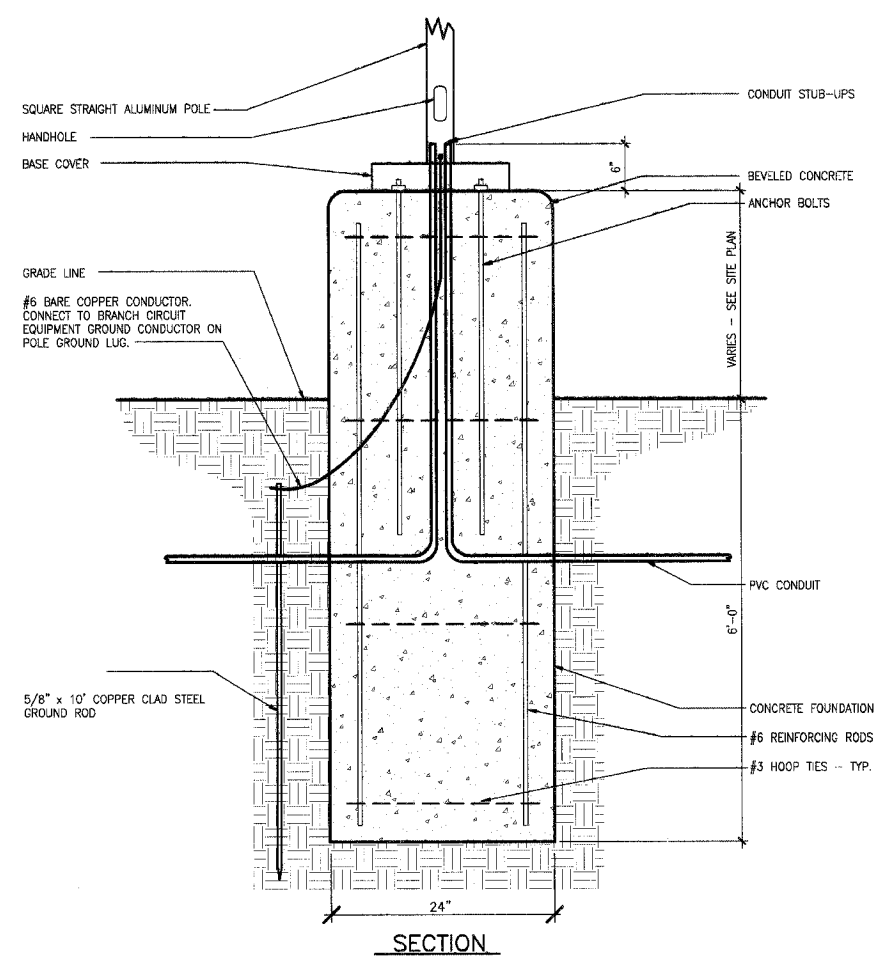
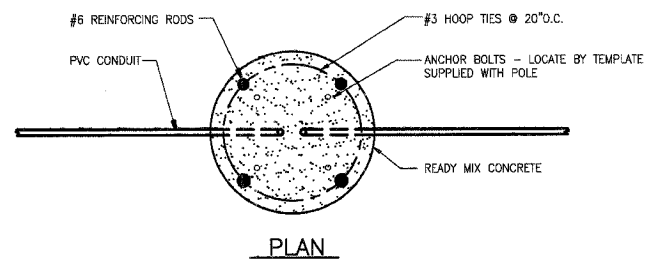
D NOT USED
NO SCALE



E CONDUIT TRENCH UNDER VEHICULAR PAVEMENT
NO SCALE

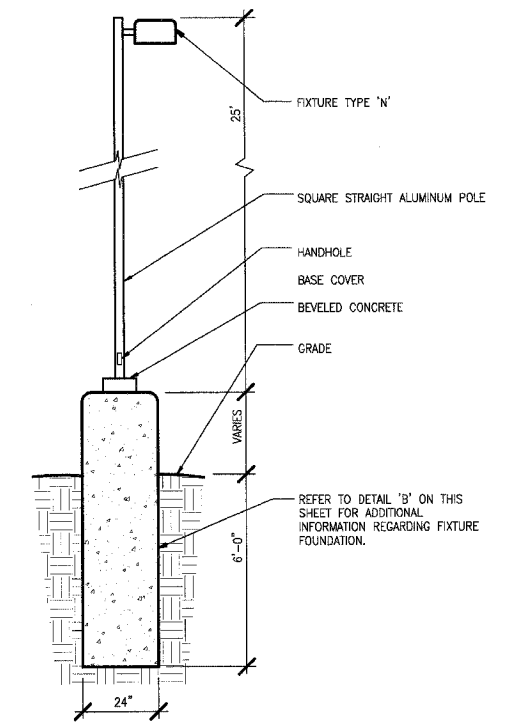


F CONDUIT TRENCH IN GRASS OR UNDER SIDEWALK
NO SCALE

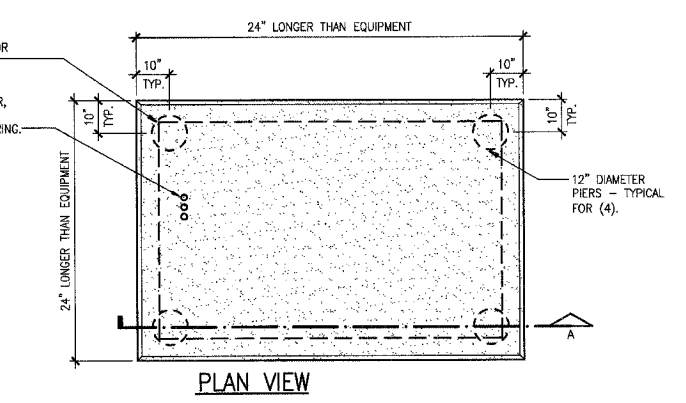
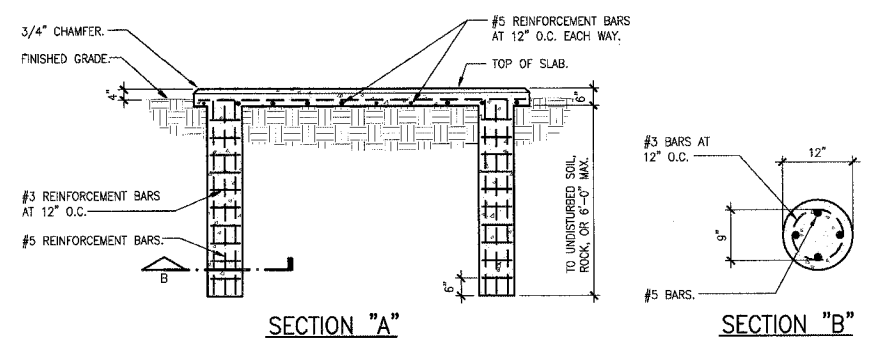


C SITE LIGHTING FIXTURE FOUNDATION DETAIL
NO SCALE

THIS DETAIL TYPICAL FOR FIXTURE TYPES K AND N.



A SITE LIGHTING FIXTURE DETAIL "TYPE N"
NO SCALE



B GENERATOR PAD DETAIL
NO SCALE

P:\2002\10-02048\B0005C\EA6-02.DWG | 7/2/2007 10:19:32 AM | Xref: TB6436C.DWG | imogias.none