

F.A.I. RTE.	SECTION	COUNTY	TOTAL SHEETS	SHEET NO.
57/64	(41-3)HBK	JEFFERSON	518	184
STA.		TO STA.		
FED. ROAD DIST. NO.		ILLINOIS FED. AID PROJECT		
CONTRACT NO. 98963				



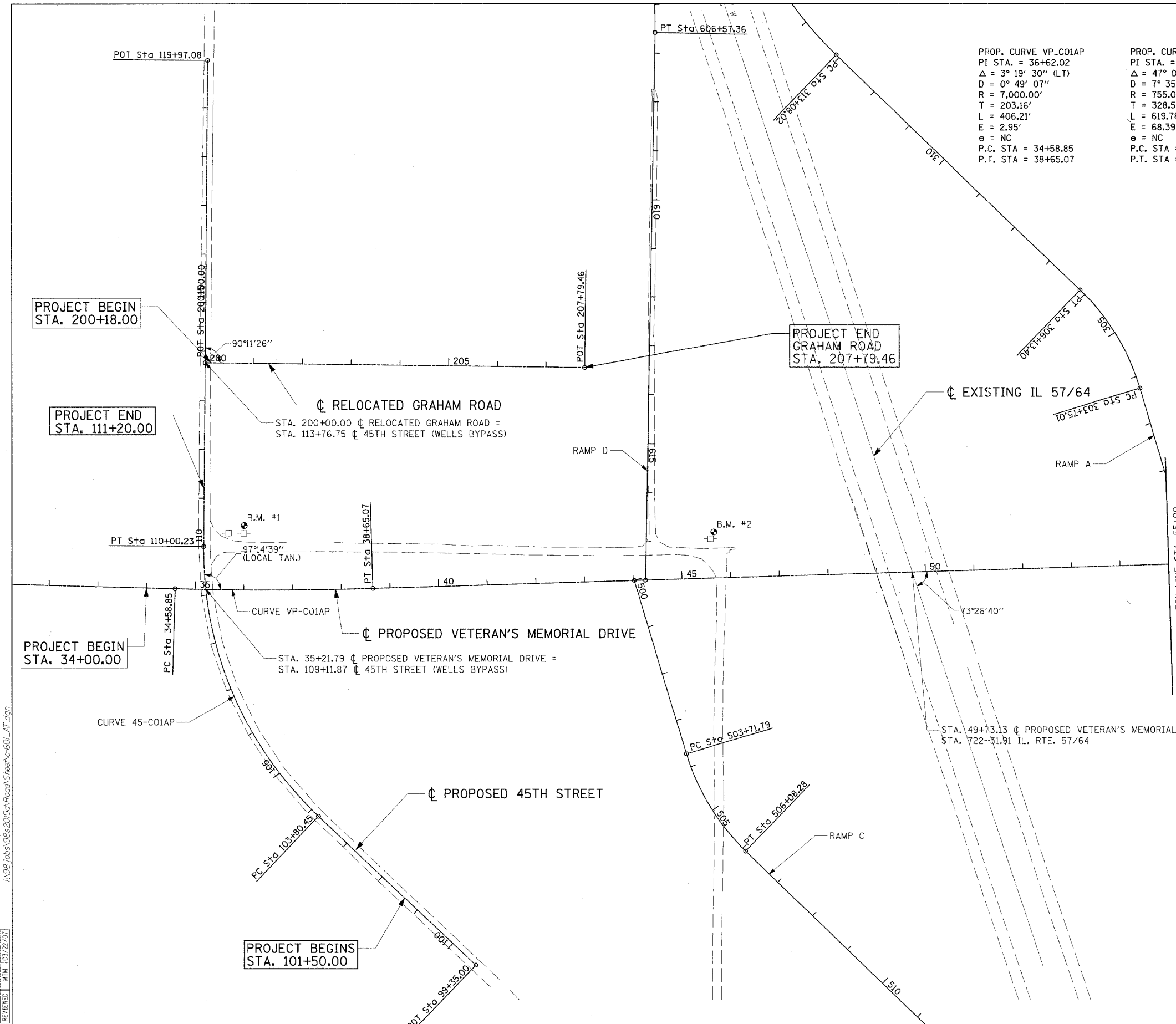
PROP. CURVE VP-C01AP
 PI STA. = 36+62.02
 $\Delta = 3^\circ 19' 30''$ (LT)
 $D = 0^\circ 49' 07''$
 $R = 7,000.00'$
 $T = 203.16'$
 $L = 406.21'$
 $E = 2.95'$
 $e = NC$
 P.C. STA = 34+58.85
 P.T. STA = 38+65.07

PROP. CURVE 45-C01AP
 PI STA. = 107+09.00
 $\Delta = 47^\circ 02' 03''$ (RT)
 $D = 7^\circ 35' 20''$
 $R = 755.00'$
 $T = 328.55'$
 $L = 619.78'$
 $E = 68.39'$
 $e = NC$
 P.C. STA = 103+80.45
 P.T. STA = 110+00.23

- BM # 1 - 60d NAIL, NORTH FACE 2ND POWER POLE EAST OF WELLS BYPASS (45TH STREET) ON EXISTING GRAHAM ROAD ELEV. 505.32
- BM # 2 - 60d NAIL, NORTH FACE POWER POLE @ BEND OF GRAHAM ROAD AND CRABGRASS LANE ELEV. 501.26

COORDINATE TABLE

☐ PROPOSED VETERAN'S MEMORIAL DRIVE				
PNT	CURVE NAME	STATION	NORTHING	EASTING
POC		35+00.00	595208.787	806843.844
PC	VP_C01AP	34+58.85	595209.799	806802.710
PI	VP_C01AP	36+62.02	595204.206	807005.797
PT	VP_C01AP	38+65.07	595210.402	807208.866
PC	VP_C01BP	59+93.70	595275.315	809336.505
PI	VP_C01BP	61+65.12	595280.543	809507.847
PT	VP_C01BP	63+36.47	595275.315	809336.505
PI		66+50.00	595271.587	809992.715
PI		76+40.34	595251.858	810982.859
POT		83+84.70	595237.784	811727.084
☐ PROPOSED 45TH STREET				
POT		99+35.00	594435.335	807419.807
PC	45-C01AP	103+80.45	594741.900	807096.635
PI	45-C01AP	107+09.00	594968.015	806858.270
PT	45-C01AP	110+00.23	595296.553	806861.272
POT		119+97.08	596293.359	806870.380
☐ RELOCATED GRAHAM ROAD				
POT		200+00.00	595673.056	806864.712
POT		207+79.46	595663.344	807644.109



03/21/07 07:49 AM
 I:\987\obs\98620799\Road\Sheet\4-601_AT.dgn

DATE	BY	REVISION
02/26/04	RLT	
04/12/04	JED	
03/22/01	MTM	

REVISIONS	
NAME	DATE

ILLINOIS DEPARTMENT OF TRANSPORTATION
 ALIGNMENT, TIES
 AND BENCHMARKS
 VETERANS MEMORIAL DRIVE
 INTERCHANGE
 SECTION (41-3)HBK
 SCALE: 1"=100'
 DATE 3-22-07
 DRAWN BY RLT
 CHECKED BY MTM