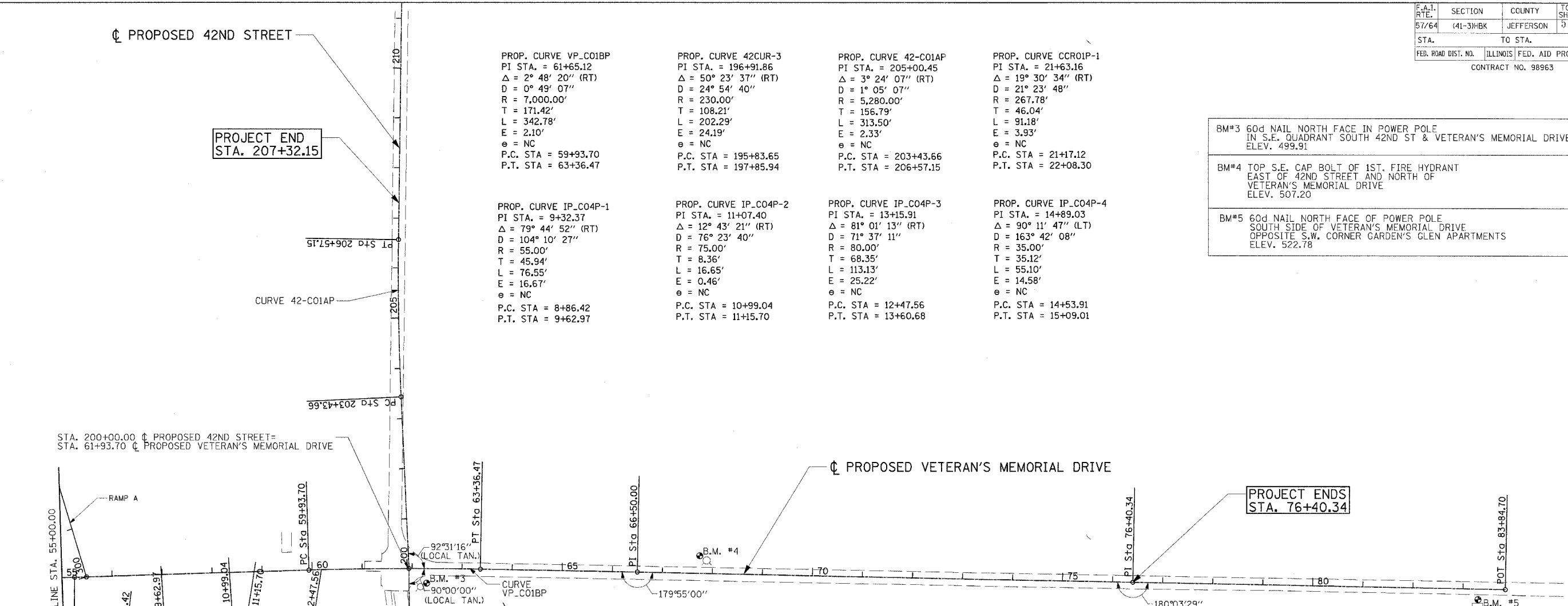


03/21/2007, 07:50 AM
 I:\98\jobs\98s\20\98\Road\Sheet\c-602_AT.dgn

F.A.I. RTE.	SECTION	COUNTY	TOTAL SHEETS	SHEET NO.
57/64	(41-3)HBK	JEFFERSON	518	030
STA.		TO STA.		
FED. ROAD DIST. NO.		ILLINOIS FED. AID PROJECT		
CONTRACT NO. 98963				



PROP. CURVE VP_C01BP PI STA. = 61+65.12 $\Delta = 2^\circ 48' 20''$ (RT) $D = 0^\circ 49' 07''$ $R = 7,000.00'$ $T = 171.42'$ $L = 342.78'$ $E = 2.10'$ $e = NC$ P.C. STA = 59+93.70 P.T. STA = 63+36.47	PROP. CURVE 42CUR-3 PI STA. = 196+91.86 $\Delta = 50^\circ 23' 37''$ (RT) $D = 24^\circ 54' 40''$ $R = 230.00'$ $T = 108.21'$ $L = 202.29'$ $E = 24.19'$ $e = NC$ P.C. STA = 195+83.65 P.T. STA = 197+85.94	PROP. CURVE 42-C01AP PI STA. = 205+00.45 $\Delta = 3^\circ 24' 07''$ (RT) $D = 1^\circ 05' 07''$ $R = 5,280.00'$ $T = 156.79'$ $L = 313.50'$ $E = 2.33'$ $e = NC$ P.C. STA = 203+43.66 P.T. STA = 206+57.15	PROP. CURVE CCR01P-1 PI STA. = 21+63.16 $\Delta = 19^\circ 30' 34''$ (RT) $D = 21^\circ 23' 48''$ $R = 267.78'$ $T = 46.04'$ $L = 91.18'$ $E = 3.93'$ $e = NC$ P.C. STA = 21+17.12 P.T. STA = 22+08.30
PROP. CURVE IP_C04P-1 PI STA. = 9+32.37 $\Delta = 79^\circ 44' 52''$ (RT) $D = 104^\circ 10' 27''$ $R = 55.00'$ $T = 45.94'$ $L = 76.55'$ $E = 16.67'$ $e = NC$ P.C. STA = 8+86.42 P.T. STA = 9+62.97	PROP. CURVE IP_C04P-2 PI STA. = 11+07.40 $\Delta = 12^\circ 43' 21''$ (RT) $D = 76^\circ 23' 40''$ $R = 75.00'$ $T = 8.36'$ $L = 16.65'$ $E = 0.46'$ $e = NC$ P.C. STA = 10+99.04 P.T. STA = 11+15.70	PROP. CURVE IP_C04P-3 PI STA. = 13+15.91 $\Delta = 81^\circ 01' 13''$ (RT) $D = 71^\circ 37' 11''$ $R = 80.00'$ $T = 68.35'$ $L = 113.13'$ $E = 25.22'$ $e = NC$ P.C. STA = 12+47.56 P.T. STA = 13+60.68	PROP. CURVE IP_C04P-4 PI STA. = 14+89.03 $\Delta = 90^\circ 11' 47''$ (LT) $D = 163^\circ 42' 08''$ $R = 35.00'$ $T = 35.12'$ $L = 55.10'$ $E = 14.58'$ $e = NC$ P.C. STA = 14+53.91 P.T. STA = 15+09.01

- BM#3 60d NAIL NORTH FACE IN POWER POLE IN S.E. QUADRANT SOUTH 42ND ST & VETERAN'S MEMORIAL DRIVE ELEV. 499.91
- BM#4 TOP S.E. CAP BOLT OF 1ST. FIRE HYDRANT EAST OF 42ND STREET AND NORTH OF VETERAN'S MEMORIAL DRIVE ELEV. 507.20
- BM#5 60d NAIL NORTH FACE OF POWER POLE SOUTH SIDE OF VETERAN'S MEMORIAL DRIVE OPPOSITE S.W. CORNER GARDEN'S GLEN APARTMENTS ELEV. 522.78

END PROJECT STA. 22+12.83

PROJECT ENDS STA. 76+40.34

PROJECT BEGIN STA. 7+68.38

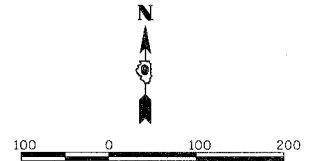
PROJECT BEGINS STA. 192+15.21

COORDINATE TABLE

ACCESS ROAD #1 & ACCESS ROAD #2				
PNT	CURVE NAME	STATION	NORTHING	EASTING
POT		4+90.82	594675.483	808956.354
POT		5+40.82	594725.480	808955.818
POT		5+91.03	594775.527	808959.905
POT		7+13.68	594896.478	808980.212
PC	IP_C04P-1	8+86.42	595068.078	809000.053
PI	IP_C04P-1	9+32.37	595113.719	809005.330
PT	IP_C04P-1	9+62.97	595116.649	809051.181
POT		10+00.00	595119.011	809088.136
PC	IP_C04P-2	10+99.04	595125.327	809186.973
PI	IP_C04P-2	11+07.40	595125.861	809195.317
PT	IP_C04P-2	11+15.70	595124.543	809203.574
PC	IP_C04P-3	12+47.56	595103.766	809333.789
PI	IP_C04P-3	13+15.91	595092.996	809401.286
PT	IP_C04P-3	13+60.68	595024.645	809401.184
PC	IP_C04P-4	14+53.91	594931.416	809401.044
PI	IP_C04P-4	14+89.03	594896.296	809400.991
PT	IP_C04P-4	15+09.01	594896.364	809436.111
POT		16+82.96	594896.699	809610.059
POT		20+00.00	594876.043	809634.449
PC	CCR01P-1	21+17.12	594966.423	809708.941
PI	CCR01P-1	21+63.16	595001.481	809738.777
PT	CCR01P-1	22+08.30	595024.562	809778.608
POT		22+49.30	595044.158	809814.622

COORDINATE TABLE

PROPOSED 42ND STREET			
POT	STATION	NORTHING	EASTING
POT	191+10.80	594586.718	809985.481
PC	42CUR-3	195+83.65	594887.458
PI	42CUR-3	196+91.86	594956.285
PT	42CUR-3	197+85.94	595064.499
POT		200+00.00	595278.558
POT			809536.472
PC	42-C01AP	203+43.66	595621.854
PI	42-C01AP	205+00.45	595778.482
PT	42-C01AP	206+57.15	595935.262
POT		216+21.18	596899.200
POT			809528.565



REVISIONS	
NAME	DATE

ILLINOIS DEPARTMENT OF TRANSPORTATION
 ALIGNMENT, TIES
 AND BENCHMARKS
 VETERANS MEMORIAL DRIVE
 INTERCHANGE
 SECTION (41-3)HBK
 SCALE: 1"=100'
 DATE 3-22-07
 DRAWN BY RLT
 CHECKED BY MTM