

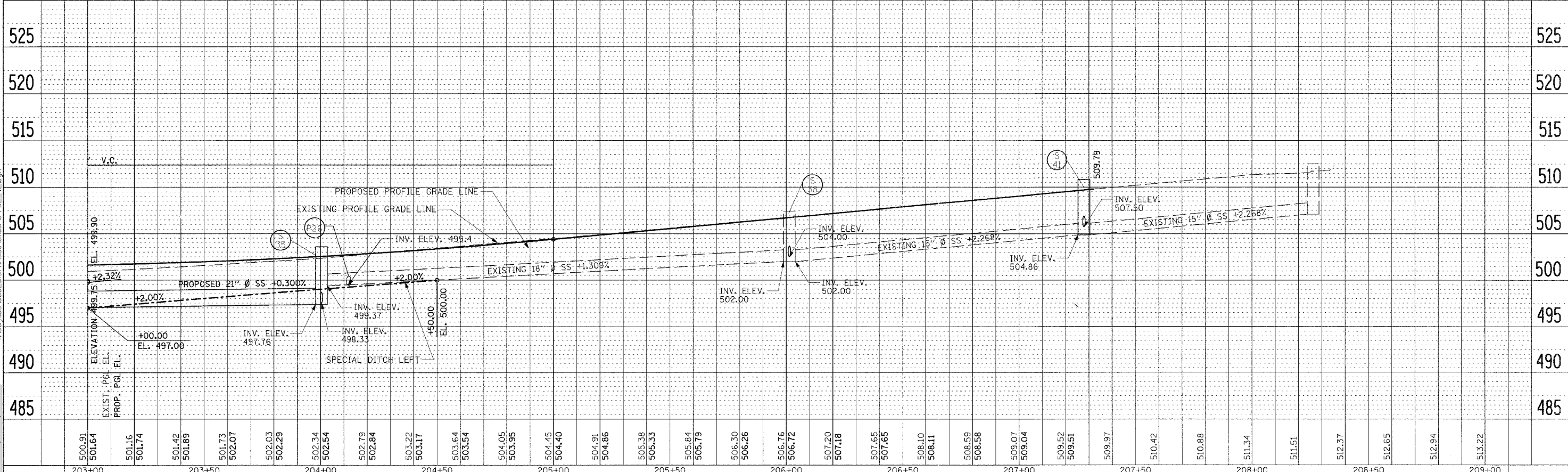
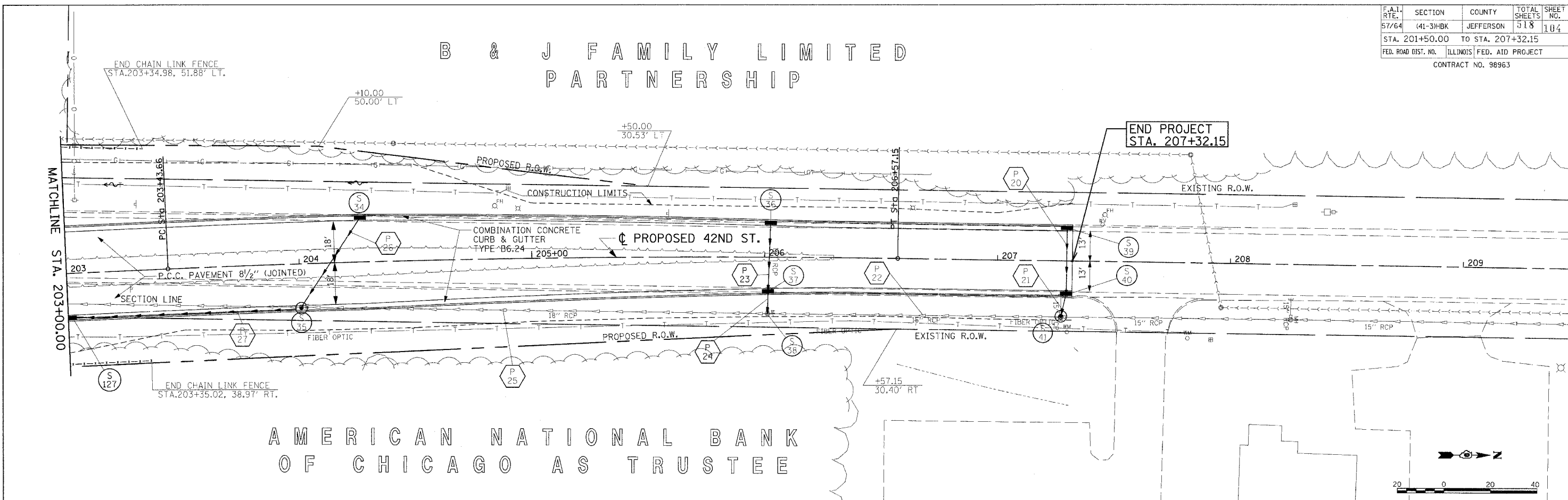
F.A.I. RTE.	SECTION	COUNTY	TOTAL SHEETS	SHEET NO.
57/64	41-3H-BK	JEFFERSON	118	104
STA. 201+50.00		TO STA. 207+32.15		
FED. ROAD DIST. NO.		ILLINOIS FED. AID PROJECT		
CONTRACT NO. 98963				

B & J FAMILY LIMITED PARTNERSHIP

DATE	3/1/04
BY	...
CHECKED	...
DATE	...
NO. OF MAY CHECKED	...
CADD FILE NAME	...

DATE	03/22/2007 03:33 PM
BY	...
CHECKED	...
DATE	...
NO. OF MAY CHECKED	...
CADD FILE NAME	...

DATE	03/25/04
BY	...
CHECKED	...
DATE	03/22/07
NO. OF MAY CHECKED	...
CADD FILE NAME	...



ROADWAY PLAN & PROFILE 42ND ST. STA. 203+00.00 TO STA. 207+32.15