

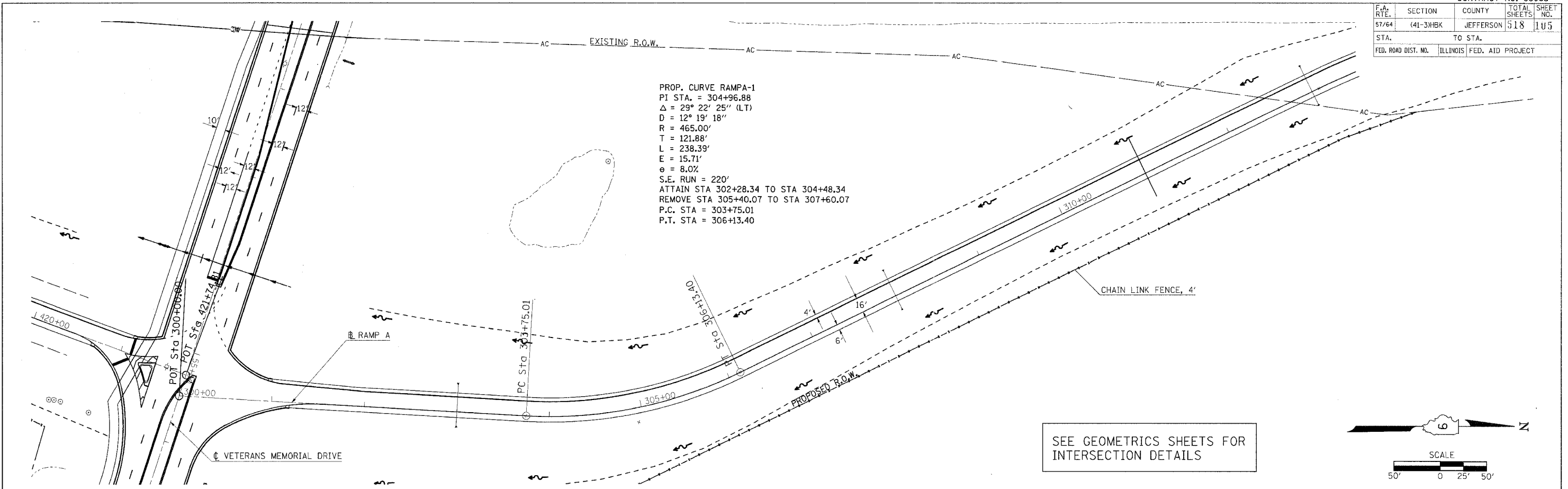
F.A. REF.	SECTION	COUNTY	TOTAL SHEETS	SHEET NO.
57/64	41-31BK	JEFFERSON	518	115
STA.	TO STA.			
FED. ROAD DIST. NO.	ILLINOIS	FED. AID PROJECT		

PROP. CURVE RAMP A-1
 PI STA. = 304+96.88
 $\Delta = 29^\circ 22' 25''$ (LT)
 $D = 12^\circ 19' 18''$
 $R = 465.00'$
 $T = 121.88'$
 $L = 238.39'$
 $E = 15.71'$
 $e = 8.0\%$
 $S.E. RUN = 220'$
 ATTAIN STA 302+28.34 TO STA 304+48.34
 REMOVE STA 305+40.07 TO STA 307+60.07
 P.C. STA = 303+75.01
 P.T. STA = 306+13.40

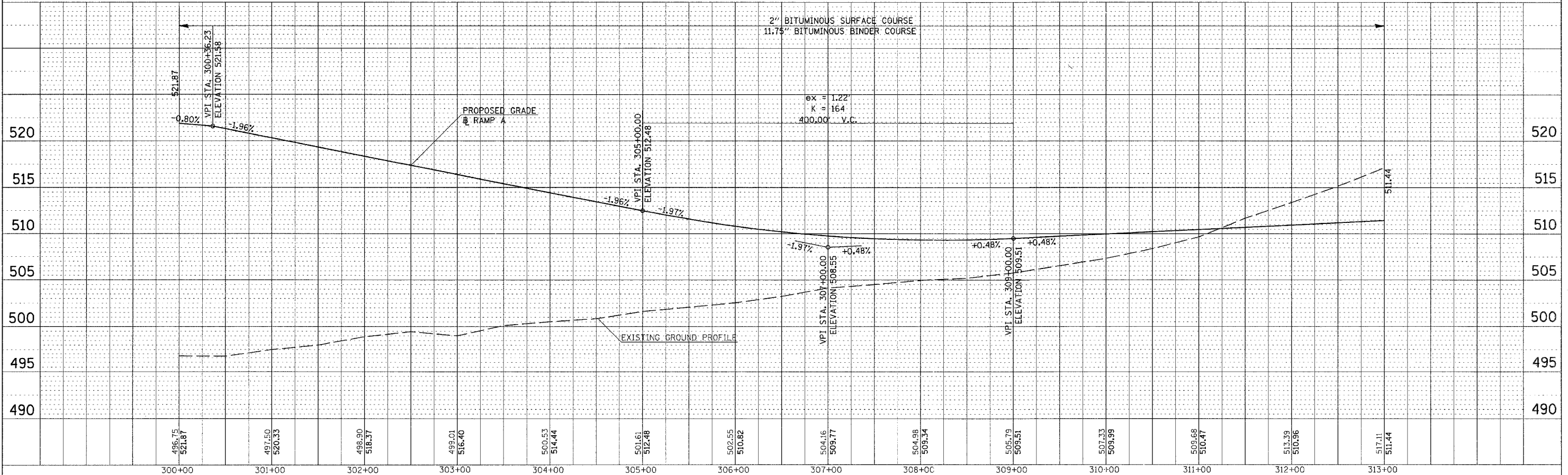
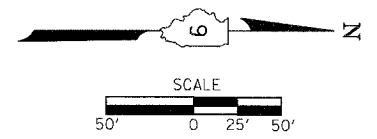
PLAN	BY	DATE
SURVEYED		
ADJUSTMENT CHECKED		
PLANNING CHECKED		
BY FILE NAME		

PROFILE	BY	DATE
SURVEYED		
GRADES CHECKED		
STRUCTURE NOTATIONS CHECKED		

PLOT DATE = 03/22/2007 02:59 PM
 FILE NAME = I:\98963\98963\DOT\RAMPS\103506P1A32
 PLOT SCALE = 1/4" = 10' / IN.
 USER NAME = JGD



SEE GEOMETRICS SHEETS FOR INTERSECTION DETAILS



PLAN PROFILE RAMP A