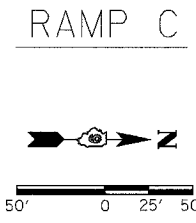
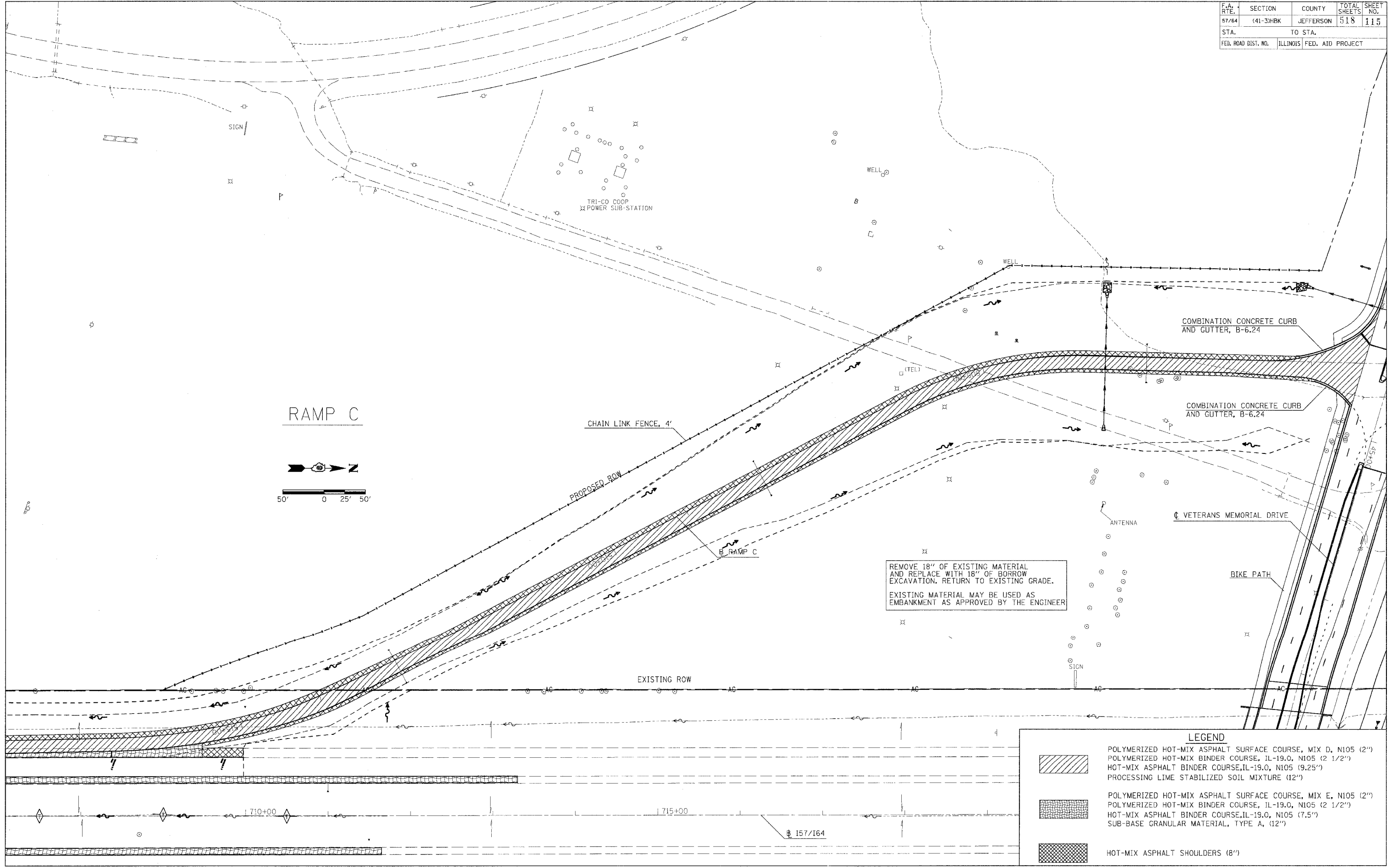


F.A. RTE.	SECTION	COUNTY	TOTAL SHEETS	SHEET NO.
57/64	(41-3)HBK	JEFFERSON	518	115
STA.		TO STA.		
FED. ROAD DIST. NO.	ILLINOIS	FED. AID PROJECT		



REMOVE 18" OF EXISTING MATERIAL AND REPLACE WITH 18" OF BORROW EXCAVATION. RETURN TO EXISTING GRADE.
EXISTING MATERIAL MAY BE USED AS EMBANKMENT AS APPROVED BY THE ENGINEER

LEGEND

	POLYMERIZED HOT-MIX ASPHALT SURFACE COURSE, MIX D, N105 (2") POLYMERIZED HOT-MIX BINDER COURSE, IL-19.0, N105 (2 1/2") HOT-MIX ASPHALT BINDER COURSE, IL-19.0, N105 (9.25") PROCESSING LIME STABILIZED SOIL MIXTURE (12")
	POLYMERIZED HOT-MIX ASPHALT SURFACE COURSE, MIX E, N105 (2") POLYMERIZED HOT-MIX BINDER COURSE, IL-19.0, N105 (2 1/2") HOT-MIX ASPHALT BINDER COURSE, IL-19.0, N105 (7.5") SUB-BASE GRANULAR MATERIAL, TYPE A, (12")
	HOT-MIX ASPHALT SHOULDERS (8")

PLOT DATE = 03/22/2007, 02:28 PM
FILE NAME = I:\198\job\98963\19A.DOT RAMP'S view\rdm32
USER NAME = RL