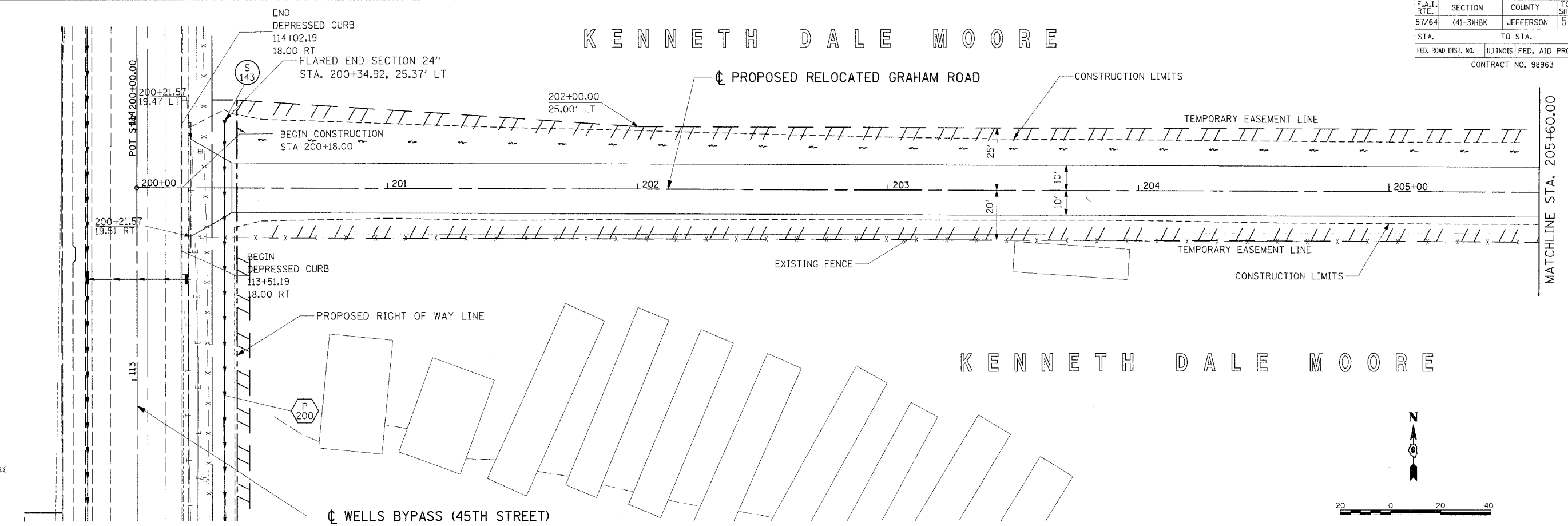


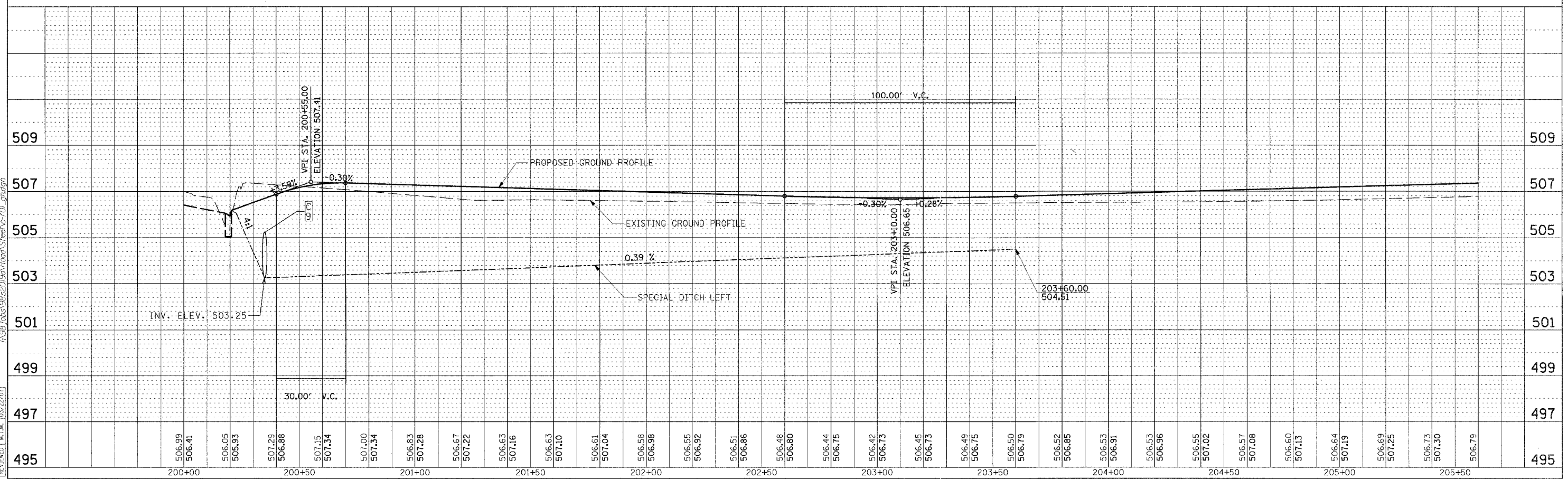
F.A.I. SECTION COUNTY TOTAL SHEETS SHEET NO.
57/64 441-3H8K JEFFERSON 518 132
STA. TO STA.
FED. ROAD DIST. NO. ILLINOIS FED. AID PROJECT
CONTRACT NO. 98963

KENNETH DALE MOORE

PLAN	DATE
BY	
REVISION	
NOTED	
ALIGNED	
CHECKED	
DATE	



PROFILE	DATE
BY	
REVISION	
NOTED	
GRADES CHECKED	
STRUCTURE NOTATIONS CHECKED	
NO.	



03/21/2007 08:31 AM
 (A:98) (663-96520) (90) (Road) (S) (88) (C-70) (7) (1) (6) (7)

LAYOUT	DATE
BY	
REVISION	
DATE	

ROADWAY PLAN & PROFILE RELOCATED GRAHAM ROAD STA. 200+00.00 TO STA. 205+60.00