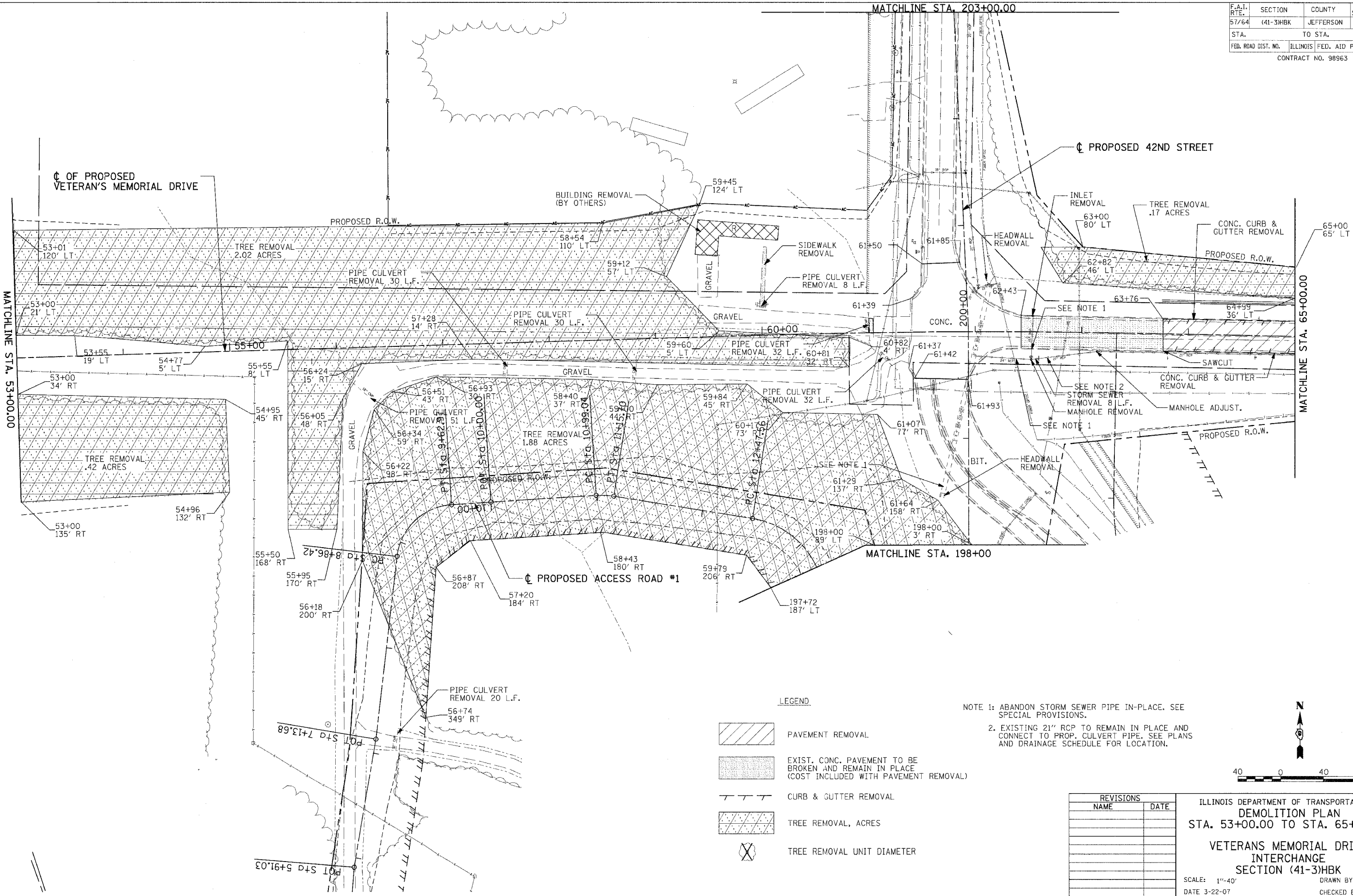


F.A.I. RTE.	SECTION	COUNTY	TOTAL SHEETS	SHEET NO.
57/64	(41-3)HBK	JEFFERSON	518	140
STA.	TO STA.			
FED. ROAD DIST. NO.	ILLINOIS	FED. AID PROJECT		
CONTRACT NO. 98963				

MATCHLINE STA. 203+00.00

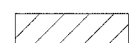

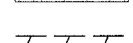
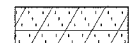



Copyright Hanson Professional Services Inc. 2007  
**HANSON**  
 Hanson Professional Services Inc.

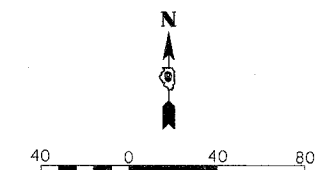
03/22/2007 03:21 PM  
 I:\98\98963\2019A\Road\Sheet\c-101-demol.dgn

LAYOUT	RLT	02/26/04
DRAWN	JEO	04/12/04
REVIEWED	WTM	03/22/07

**LEGEND**

-  PAVEMENT REMOVAL
-  EXIST. CONC. PAVEMENT TO BE BROKEN AND REMAIN IN PLACE (COST INCLUDED WITH PAVEMENT REMOVAL)
-  CURB & GUTTER REMOVAL
-  TREE REMOVAL, ACRES
-  TREE REMOVAL UNIT DIAMETER

NOTE 1: ABANDON STORM SEWER PIPE IN-PLACE. SEE SPECIAL PROVISIONS.  
 2. EXISTING 21" RCP TO REMAIN IN PLACE AND CONNECT TO PROP. CULVERT PIPE. SEE PLANS AND DRAINAGE SCHEDULE FOR LOCATION.



REVISIONS	
NAME	DATE

ILLINOIS DEPARTMENT OF TRANSPORTATION  
**DEMOLITION PLAN**  
 STA. 53+00.00 TO STA. 65+00.00  
**VETERANS MEMORIAL DRIVE INTERCHANGE**  
 SECTION (41-3)HBK  
 SCALE: 1"=40'  
 DATE 3-22-07  
 DRAWN BY RLT  
 CHECKED BY WTM