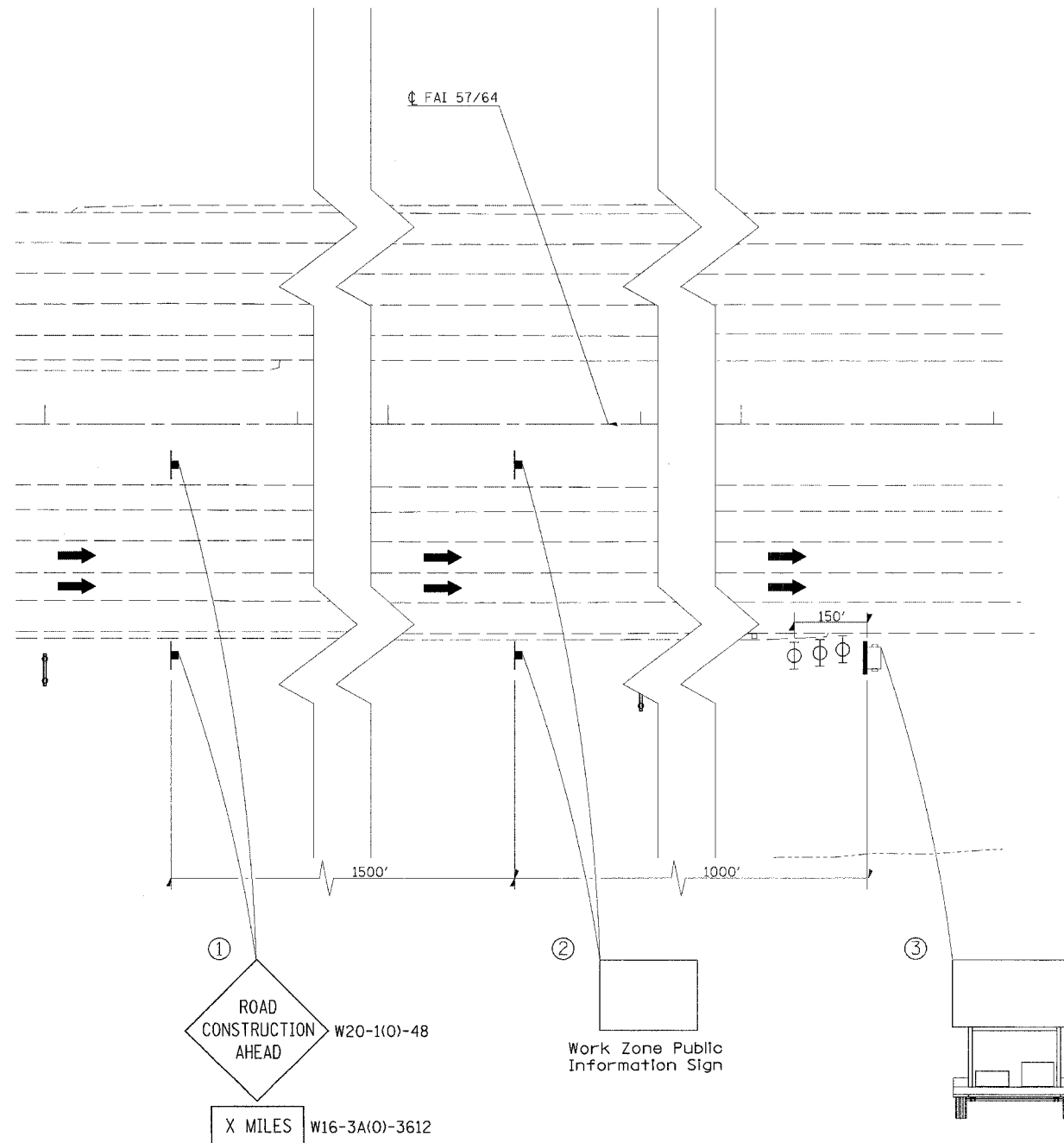


F.A.I. RTE.	SECTION	COUNTY	TOTAL SHEETS	SHEET NO.
57/64	(41-3)H8K	JEFFERSON	318	166
STA.		TO STA.		
FED. ROAD DIST. NO.		ILLINOIS	FED. AID PROJECT	

STAGE III

LANE SHIFT - TO BE PAID FOR AS TRAFFIC CONTROL AND PROTECTION (SPECIAL), CASE II.

1. RELOCATE TEMPORARY BARRIER AND IMPACT ATTENUATOR TO ALLOW FOR LONGER ACCELERATION LANE AT THE SB ILLINOIS 15 RAMP. REMOVE CHANGEABLE MESSAGE SIGN DIRECTING SOUTHBOUND TRAFFIC TO MERGE INTO THE PASSING LANE PRIOR TO RAMP.
2. REMOVE ANY CONFLICTING PAVEMENT MARKING AND SHIFT NORTHBOUND AND SOUTHBOUND LANES ONTO NEW FULL DEPTH SHOULDER (REFER TO CONSTRUCTION SHEETS FOR LIMITS) WITH TEMPORARY PAINT.
3. PLACE RAISED REFLECTIVE MARKERS ON THE CENTER STRIPE AT 40' CENTERS TO SUPPLEMENT THE TEMPORARY PAINT.
4. PLACE TEMPORARY CONCRETE BARRIER ADJACENT TO THE SHIFTED DRIVING LANE.
5. ANY WORK THAT REQUIRES A LANE CLOSURE SHOULD BE COMPLETED BETWEEN 7 PM AND 7 AM AND PAID FOR AS TRAFFIC CONTROL AND PROTECTION 701400 AND TRAFFIC CONTROL AND PROTECTION 701401.
6. COMPLETE REMAINING INTERCHANGE CONSTRUCTION UNDER THIS CONFIGURATION.



LEGEND

- PORTABLE CHANGEABLE MESSAGE SIGN
- SIGN
- TYPE II BARRICADE, DRUM OR VERTICAL BARRICADE WITH MONODIRECTIONAL FLASHING LIGHT
- TRAFFIC FLOW

- ① THE ROAD CONSTRUCTION AHEAD SIGN SHALL BE LOCATED 3 TO 5 MILES IN ADVANCE OF THE PROJECT LIMITS.
- ② THE MESSAGE AND SIZE OF THE WORK ZONE PUBLIC INFORMATION SIGN SHALL BE AS SPECIFIED BY THE DEPARTMENT.
- ③ THE MESSAGE BOARD SHALL BE USED TO DISPLAY STATUS OF LANES WITHIN THE PROJECT. THE PRIMARY MESSAGE SHALL BE: "LANE SHIFT AHEAD" / " MILES AHEAD"

REVISIONS		ILLINOIS DEPARTMENT OF TRANSPORTATION
NAME	DATE	
		<p>FAI-57/64 STAGE 3 SHEET 1 OF 13</p> <p>SCALE: 1"=30'</p> <p>DATE _____ DRAWN BY _____ CHECKED BY _____</p>

