

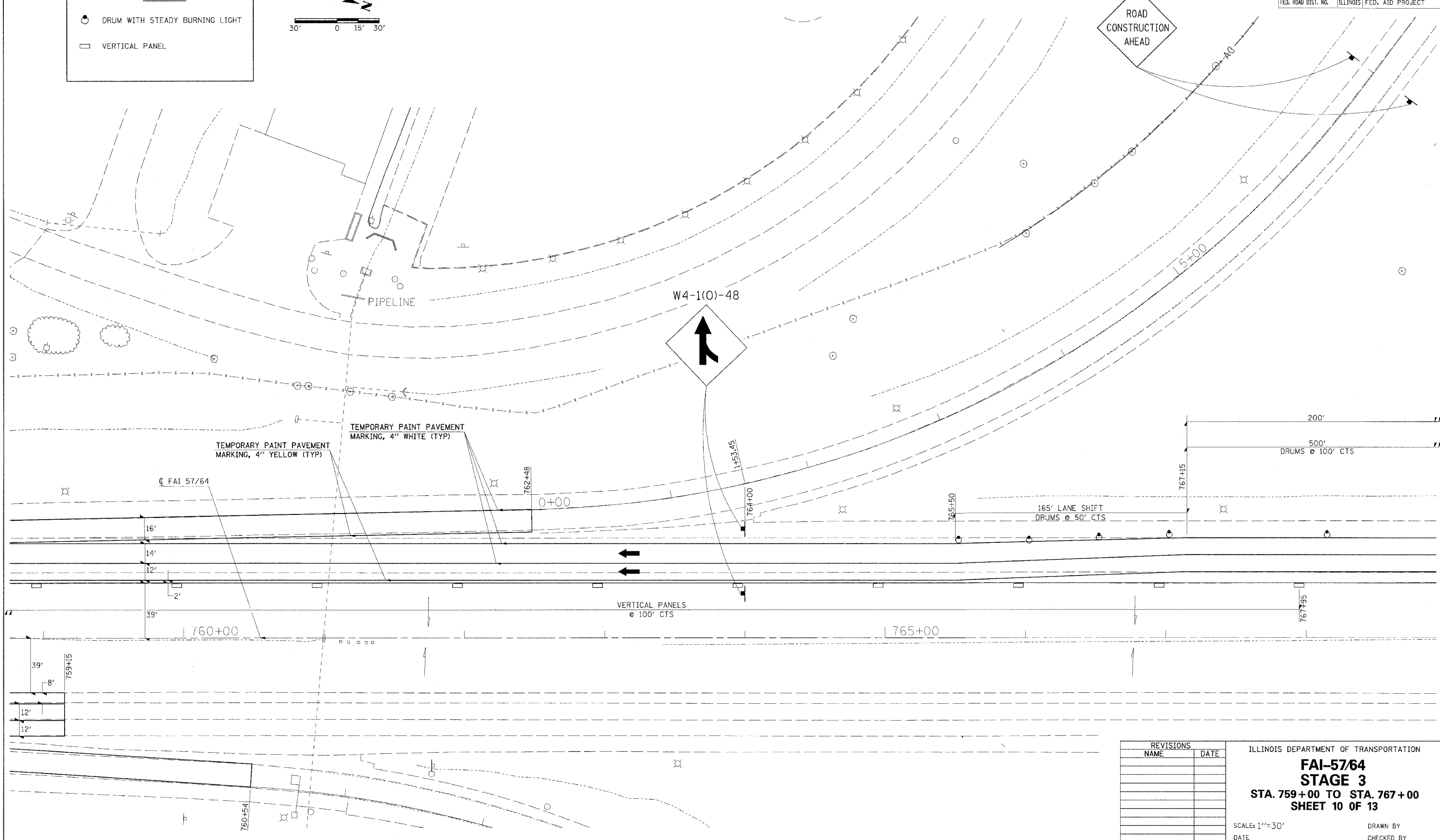
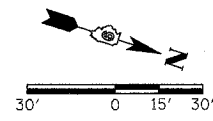
F.A.I. RTE.	SECTION	COUNTY	TOTAL SHEETS	SHEET NO.
57/64	(41-3)HDK	JEFFERSON	518	175
STA.		TO STA.		
FED. ROAD DIST. NO.		ILLINOIS FED. AID PROJECT		

W20-1(0)-48



LEGEND

- DRUM WITH STEADY BURNING LIGHT
- VERTICAL PANEL



REVISIONS	
NAME	DATE

ILLINOIS DEPARTMENT OF TRANSPORTATION
FAI-57/64
STAGE 3
STA. 759+00 TO STA. 767+00
SHEET 10 OF 13

SCALE: 1"=30'
 DATE: _____ DRAWN BY: _____
 CHECKED BY: _____