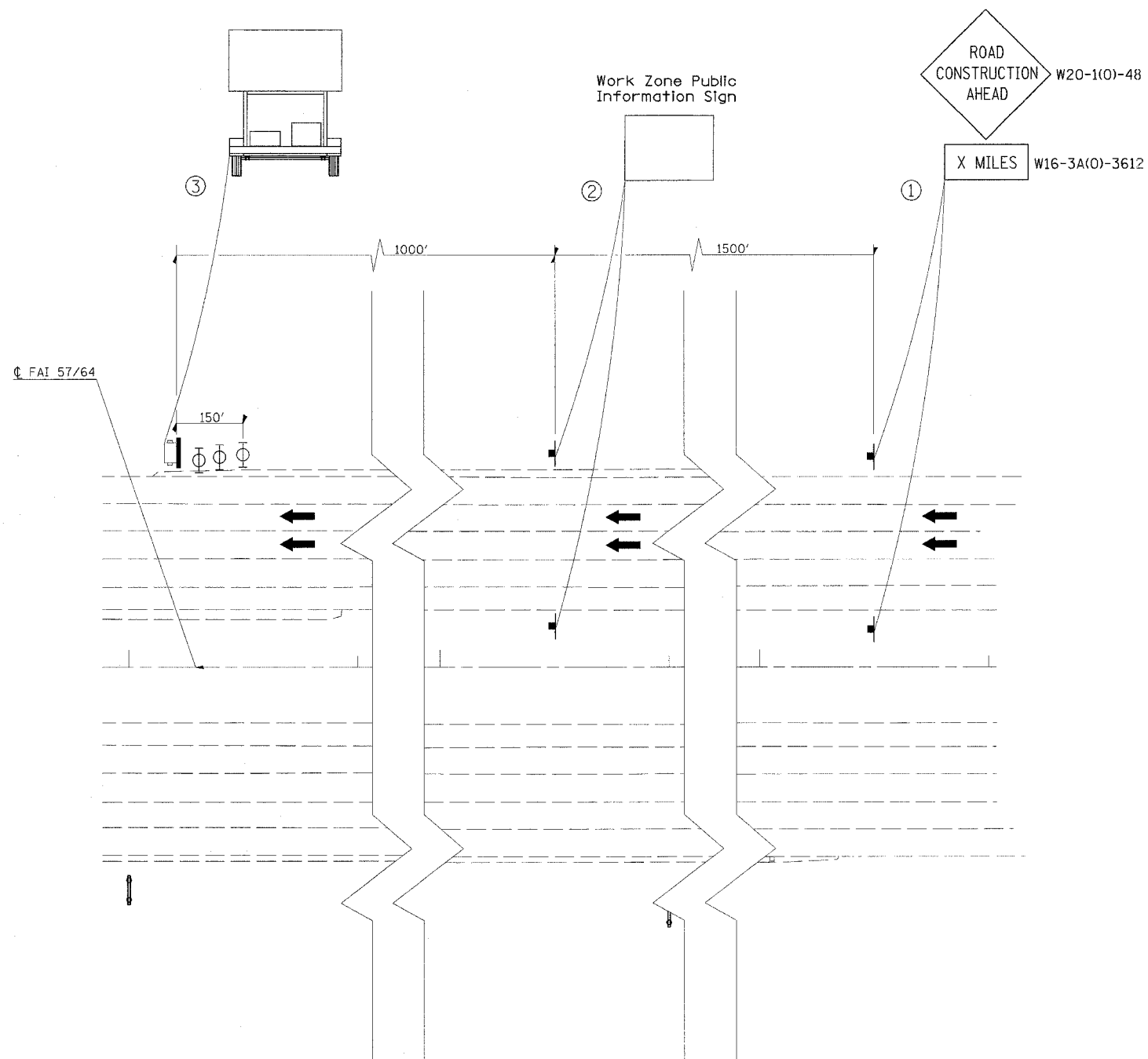


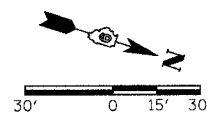
F.A.I. RTE.	SECTION	COUNTY	TOTAL SHEETS	SHEET NO.
57/64	(41-3)HBK	JEFFERSON	18	178
STA.		TO STA.		
FED. ROAD DIST. NO.		ILLINOIS FED. AID PROJECT		



- LEGEND**
- PORTABLE CHANGEABLE MESSAGE SIGN
 - SIGN
 - TYPE II BARRICADE, DRUM OR VERTICAL BARRICADE WITH MONODIRECTIONAL FLASHING LIGHT
 - TRAFFIC FLOW

- ① THE ROAD CONSTRUCTION AHEAD SIGN SHALL BE LOCATED 3 TO 5 MILES IN ADVANCE OF THE PROJECT LIMITS.
- ② THE MESSAGE AND SIZE OF THE WORK ZONE PUBLIC INFORMATION SIGN SHALL BE AS SPECIFIED BY THE DEPARTMENT.
- ③ THE MESSAGE BOARD SHALL BE USED TO DISPLAY STATUS OF LANES WITHIN THE PROJECT. THE PRIMARY MESSAGE SHALL BE: "LANE SHIFT AHEAD" / " MILES AHEAD"

03/23/2007 02:26 PM
 I:\98\985\9852019\A\DOT\RAMPS\viewed.dwg
 30.0000 / IN.
 RL



REVISIONS	
NAME	DATE

ILLINOIS DEPARTMENT OF TRANSPORTATION

**FAI-57/64
STAGE 3**

SHEET 13 OF 13

SCALE: 1"=30'
DATE

DRAWN BY
CHECKED BY