

F.A.I. RTE.	SECTION	COUNTY	TOTAL SHEETS	SHEET NO.
57/64	(41-3)HBK	JEFFERSON	518	195
STA.	TO STA.			
FED. ROAD DIST. NO.	ILLINOIS	FED. AID PROJECT	CONTRACT NO. 98963	

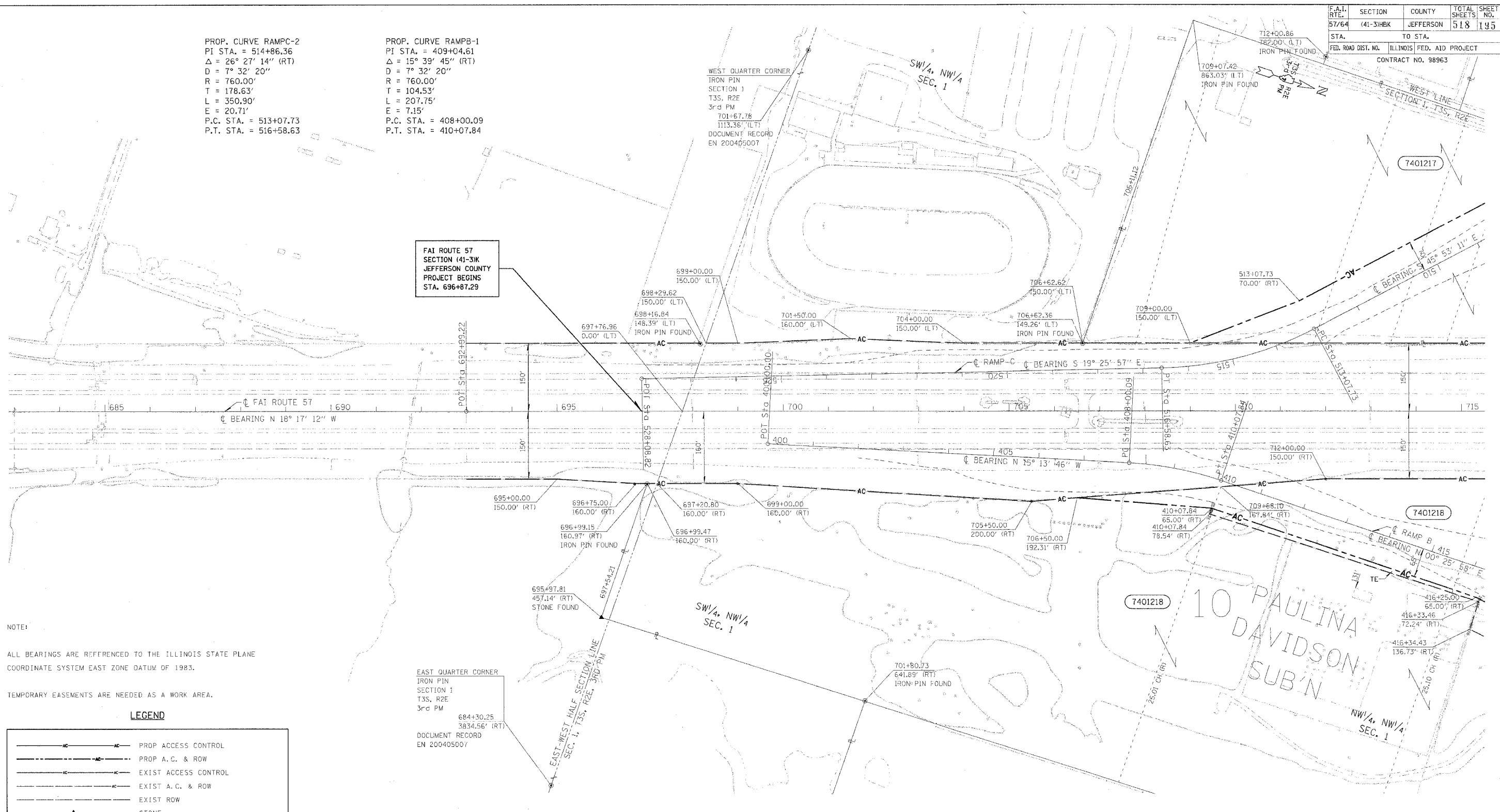
PROP. CURVE RAMPC-2
 PI STA. = 514+86.36
 $\Delta = 26^\circ 27' 14''$ (RT)
 $D = 7^\circ 32' 20''$
 $R = 760.00'$
 $T = 178.63'$
 $L = 350.90'$
 $E = 20.71'$
 P.C. STA. = 513+07.73
 P.T. STA. = 516+58.63

PROP. CURVE RAMPB-1
 PI STA. = 409+04.61
 $\Delta = 15^\circ 39' 45''$ (RT)
 $D = 7^\circ 32' 20''$
 $R = 760.00'$
 $T = 104.53'$
 $L = 207.75'$
 $E = 7.15'$
 P.C. STA. = 408+00.09
 P.T. STA. = 410+07.84

WEST QUARTER CORNER
 IRON PIN
 SECTION 1
 T3S, R2E
 3rd PM
 701+67.76
 1113.36' (LT)
 DOCUMENT RECORD
 EN 200405007

FAI ROUTE 57
 SECTION (41-3)K
 JEFFERSON COUNTY
 PROJECT BEGINS
 STA. 696+87.29

EAST QUARTER CORNER
 IRON PIN
 SECTION 1
 T3S, R2E
 3rd PM
 684+30.25
 3834.56' (RT)
 DOCUMENT RECORD
 EN 200405007



NOTE:
 ALL BEARINGS ARE REFERENCED TO THE ILLINOIS STATE PLANE COORDINATE SYSTEM EAST ZONE DATUM OF 1983.
 TEMPORARY EASEMENTS ARE NEEDED AS A WORK AREA.

LEGEND

	PROP ACCESS CONTROL
	PROP A.C. & ROW
	EXIST ACCESS CONTROL
	EXIST A.C. & ROW
	EXIST ROW
	STONE
	CHISELED "+" SECTION CORNER
	BRASS MONUMENT
	IRON PIN
	COTTON GIN SPINDLE
	TEMPORARY CONSTRUCTION EASEMENT
	RECORD DISTANCE
	CONSTRUCTION LIMITS

PARCEL	OWNER	AREA TAKEN		EASEMENT	ACCESS CONTROL	AREA REM	INST	RECORDED		EXCESS	
		ADD	EXIST					MICRO FILM NO	DATE	AREA	SOLD
7401217	JR'S MOBILE HOME SALES	8.324		0.119	966.33 LF	3.250					
7401218	ILLINOIS POWER CO.	5.755		0.675	2004.90 LF	27.284					

RIGHT OF WAY PLANS
FAI ROUTE 57
 PROJECT SECTION (41-3)HBK
 STATION 685+00 TO 715+00
 COUNTY JEFFERSON
 SCALE 100'
 SHEET 3 OF 7

NOTE: ALL AREAS ARE IN ACRES UNLESS OTHERWISE NOTED.

JOB NO. R 97-001-04

\$DATE\$\$
 CON-SPEC
 \$FILE\$
 DRAWN BY
 WRITTEN BY
 CHECKED BY
 INSPECTED BY