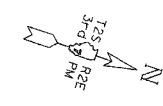
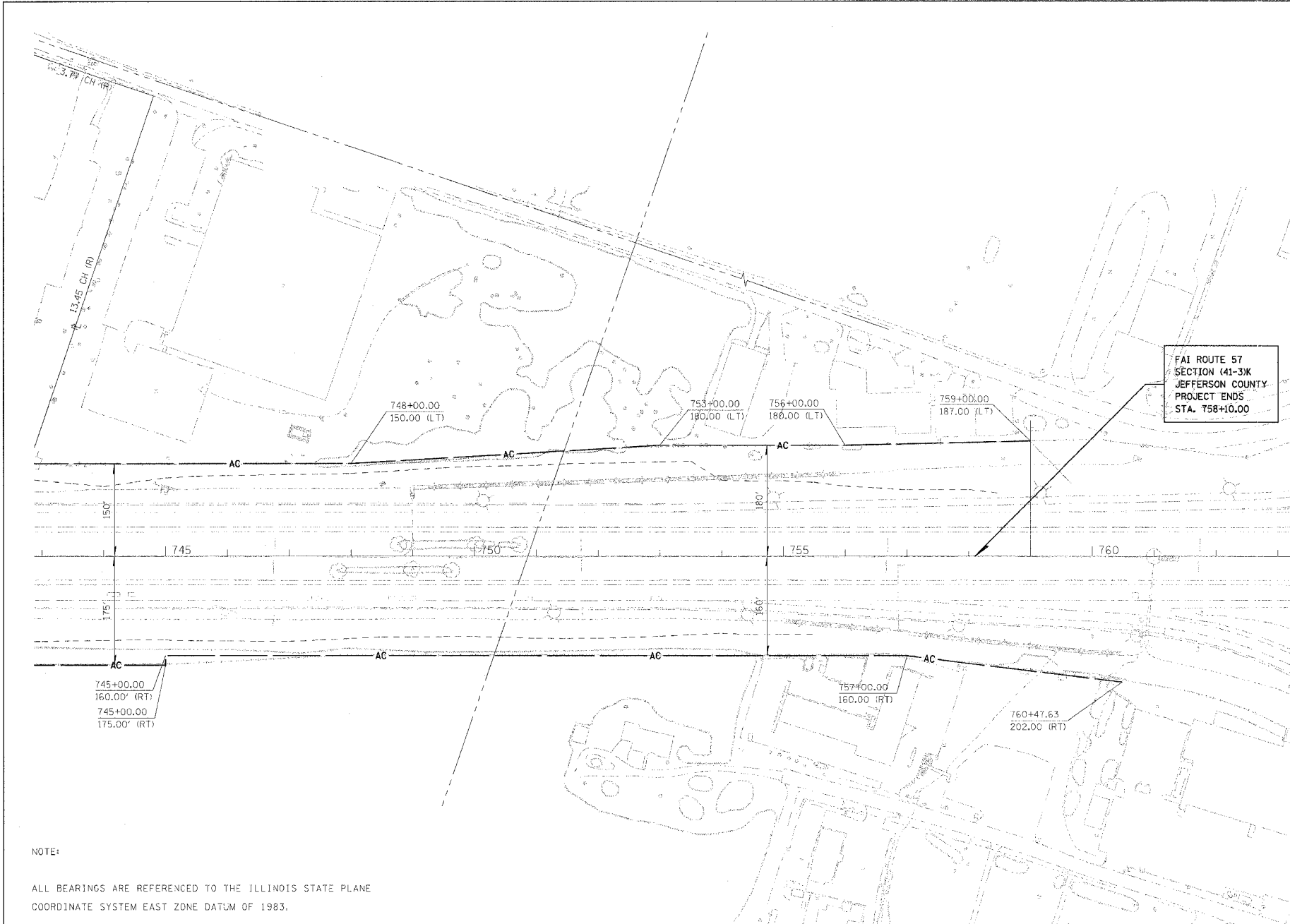


F.A.I. RTE.	SECTION	COUNTY	TOTAL SHEETS	SHEET NO.
57/64	41-3HBK	JEFFERSON	318	197
STA.		TO STA.		
FED. ROAD DIST. NO.	ILLINOIS FED. AID PROJECT	CONTRACT NO. 98963		



DATE
DGN-SPEC



FAI ROUTE 57
SECTION 41-3K
JEFFERSON COUNTY
PROJECT ENDS
STA. 758+10.00

NOTE:
ALL BEARINGS ARE REFERENCED TO THE ILLINOIS STATE PLANE COORDINATE SYSTEM EAST ZONE DATUM OF 1983.

TEMPORARY EASEMENTS ARE NEEDED AS A WORK AREA.

LEGEND

	PROP ACCESS CONTROL
	PROP A.C. & ROW
	EXIST ACCESS CONTROL
	EXIST A.C. & ROW
	EXIST ROW
	STONE
	CHISELED "+" SECTION CORNER
	BRASS MONUMENT
	IRON PIN
	COTTON GIN SPINDLE
	TEMPORARY CONSTRUCTION EASEMENT
	RECORD DISTANCE
	CONSTRUCTION LIMITS

FILE
DRAWN BY
WRITTEN BY
CHECKED BY
INSPECTED BY

JOB NO. R 97-001-04

NOTE: ALL AREAS ARE IN ACRES UNLESS OTHERWISE NOTED.

RIGHT OF WAY PLANS
FAI ROUTE 57
PROJECT SECTION(41-3)HBK
STATION 743+00 TO
STATION 758+10.00
COUNTY JEFFERSON
SCALE 100' SHEET 5 OF 7