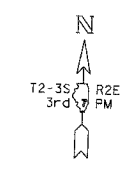


F.A.I. SECTION COUNTY TOTAL SHEETS SHEET NO.	57/64 (41-3)HBK JEFFERSON 118 199
STA. TO STA.	FED. ROAD DIST. NO. ILLINOIS FED. AID PROJECT CONTRACT NO. 98963

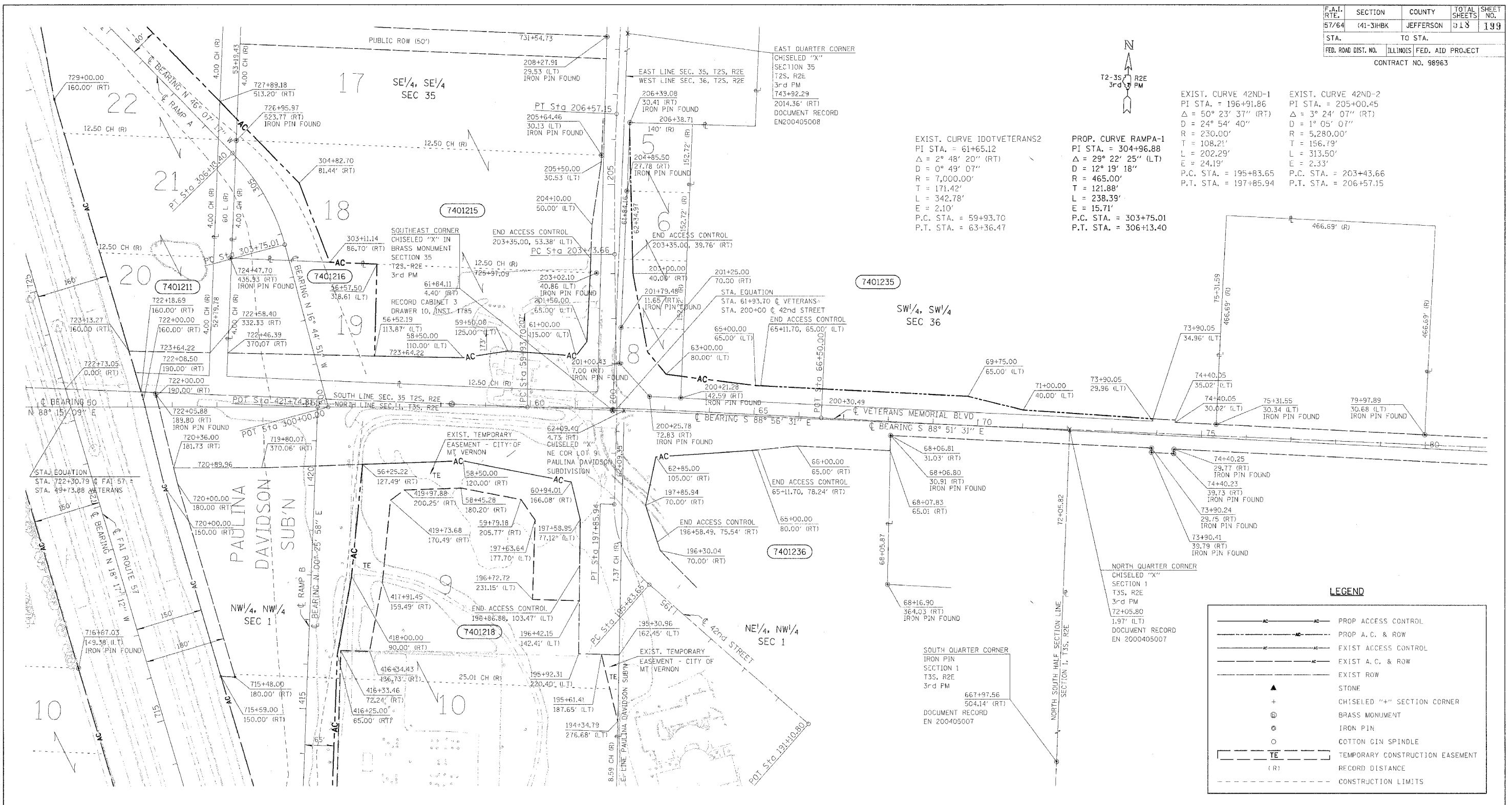


EXIST. CURVE IDOTVETERANS2  
 PI STA. = 61+65.12  
 $\Delta = 2^\circ 48' 20''$  (RT)  
 $D = 0^\circ 49' 07''$   
 $R = 7,000.00'$   
 $T = 171.42'$   
 $L = 342.78'$   
 $E = 2.10'$   
 P.C. STA. = 59+93.70  
 P.T. STA. = 63+36.47

PROP. CURVE RAMPA-1  
 PI STA. = 304+96.88  
 $\Delta = 29^\circ 22' 25''$  (LT)  
 $D = 12^\circ 19' 18''$   
 $R = 465.00'$   
 $T = 121.88'$   
 $L = 238.39'$   
 $E = 15.71'$   
 P.C. STA. = 303+75.01  
 P.T. STA. = 306+13.40

EXIST. CURVE 42ND-1  
 PI STA. = 196+91.86  
 $\Delta = 50^\circ 23' 37''$  (RT)  
 $D = 24^\circ 54' 40''$   
 $R = 230.00'$   
 $T = 108.21'$   
 $L = 202.29'$   
 $E = 24.19'$   
 P.C. STA. = 195+83.65  
 P.T. STA. = 197+85.94

EXIST. CURVE 42ND-2  
 PI STA. = 205+00.45  
 $\Delta = 3^\circ 24' 07''$  (RT)  
 $D = 1^\circ 05' 07''$   
 $R = 5,280.00'$   
 $T = 156.79'$   
 $L = 313.50'$   
 $E = 2.33'$   
 P.C. STA. = 203+43.66  
 P.T. STA. = 206+57.15



**LEGEND**

- PROP ACCESS CONTROL
- PROP A.C. & ROW
- EXIST ACCESS CONTROL
- EXIST A.C. & ROW
- EXIST ROW
- STONE
- CHISELED "+" SECTION CORNER
- BRASS MONUMENT
- IRON PIN
- COTTON GIN SPINDLE
- TEMPORARY CONSTRUCTION EASEMENT
- RECORD DISTANCE
- CONSTRUCTION LIMITS

PARCEL	OWNER	AREA TAKEN		EASEMENT	ACCESS CONTROL	AREA REM	INST	RECORDED		EXCESS	
		ADD	EXIST					MICRO FILM NO	DATE	AREA	SOLD
7401211	JAMES M. DYCUS	5.787			642.08 LF					2.395	
7401215	B & J FAMILY LIMITED	0.955			1376.15 LF					11.000	
7401216	CITY OF MT. VERNON	1.562			0					0.000	
7401218	ILLINOIS POWER CO.	5.755		0.675	2,004.90 LF					27.284	
7401235	CHICAGO TITLE LAND TRUST CO.	1.106			490.30 LF					52.074	
7401236	GODD SAMARITAN REGIONAL HEAL	0.000			424.00 LF					48.572	

**RIGHT OF WAY PLANS**  
**FAI ROUTE 57**

PROJECT SECTION (41-3)HBK

STATION 49+00 VETERANS MEMORIAL DRIVE TO  
 STATION 80+00 VETERANS MEMORIAL DRIVE

COUNTY JEFFERSON

SCALE 100' SHEET 7 OF 7

\$\$\$DATE\$\$\$  
 \*DGN-SPEC\*  
 FILE#  
 DRAWN BY  
 WRITTEN BY  
 CHECKED BY  
 INSPECTED BY

NOTE:  
 ALL BEARINGS ARE REFERENCED TO THE ILLINOIS STATE PLANE  
 COORDINATE SYSTEM EAST ZONE DATUM OF 1983.  
 TEMPORARY EASEMENTS ARE NEEDED AS A WORK AREA.

JOB NO. R 97-001-04

NOTE: ALL AREAS ARE IN ACRES UNLESS OTHERWISE NOTED.