

F.A.I. RTE.	SECTION	COUNTY	TOTAL SHEETS	SHEET NO.
57/64	(41-3)HBK	JEFFERSON	318	203
STA.		TO STA.		
FED. ROAD DIST. NO.		ILLINOIS FED. AID PROJECT		
CONTRACT NO. 98963				

NOTE A

PAVEMENT WIDTH TRANSITION
LEFT LANE LINE TRANSITIONS FROM
7.50' LT. STA. 195+81.70 TO
6.00' LT. STA. 197+84.73

PAVEMENT WIDTH TRANSITION
RIGHT LANE LINE TRANSITIONS FROM
7.50' RT. STA. 195+85.66 TO
6.00' RT. STA. 197+87.18

NOTES:

ADD 490' TO ALL PROPOSED PAVEMENT ELEVATIONS.

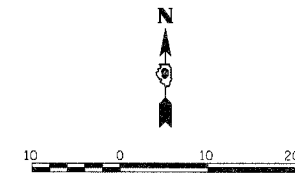
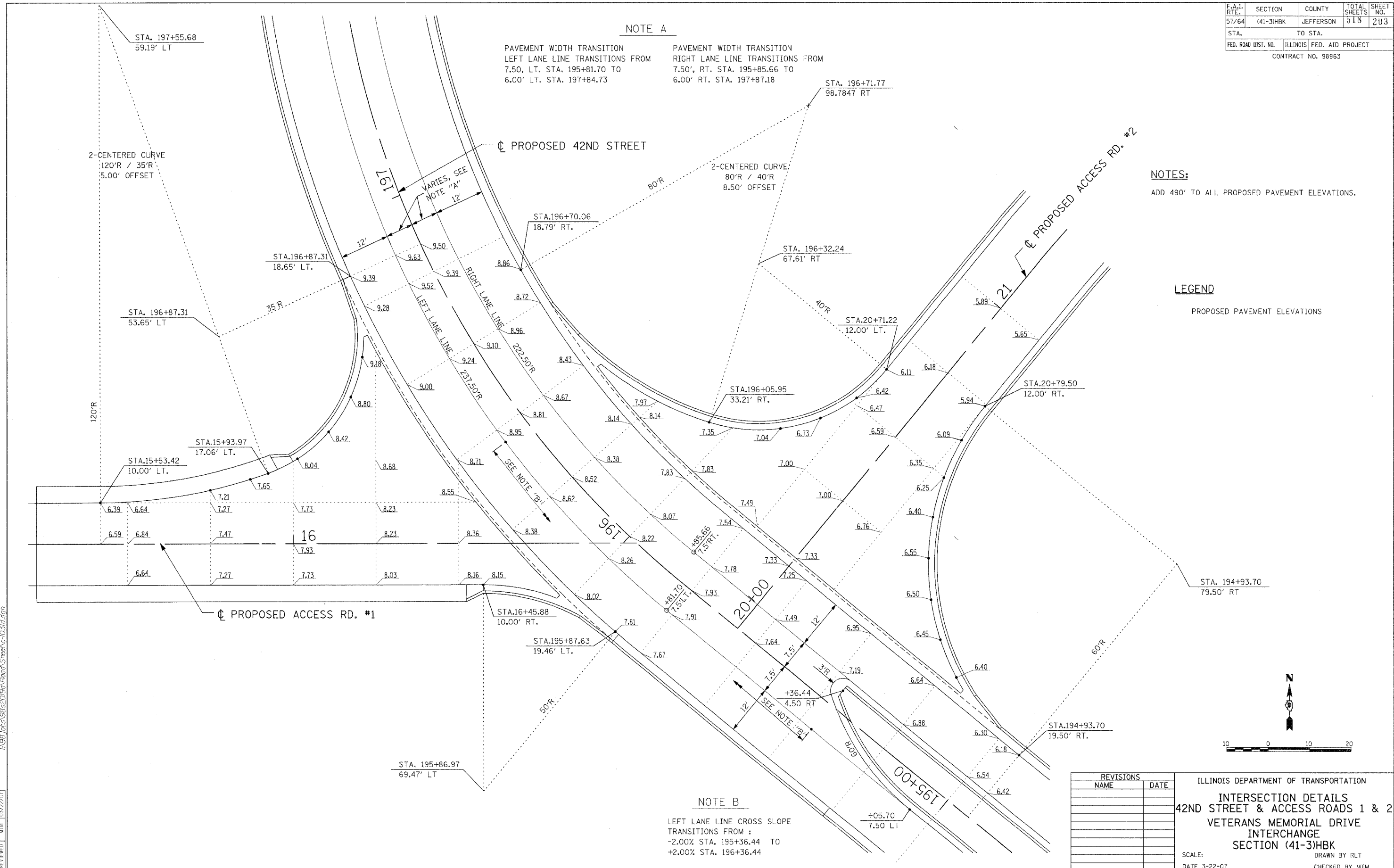
LEGEND

PROPOSED PAVEMENT ELEVATIONS

Copyright Hanson Professional Services Inc. 2/2007
HANSON
 Hanson Professional Services Inc.

C:\21202007_09_39 AM
 I:\989 jobs\989209\989\Road\Sheet%1031d.dgn

LAYOUT	RLT	02/26/04
DRAWN	JED	04/12/04
REVIEWED	MTM	03/22/07



REVISIONS	
NAME	DATE

ILLINOIS DEPARTMENT OF TRANSPORTATION
INTERSECTION DETAILS
42ND STREET & ACCESS ROADS 1 & 2
VETERANS MEMORIAL DRIVE
INTERCHANGE
SECTION (41-3)HBK
 SCALE: DRAWN BY RLT
 DATE 3-22-07 CHECKED BY MTM