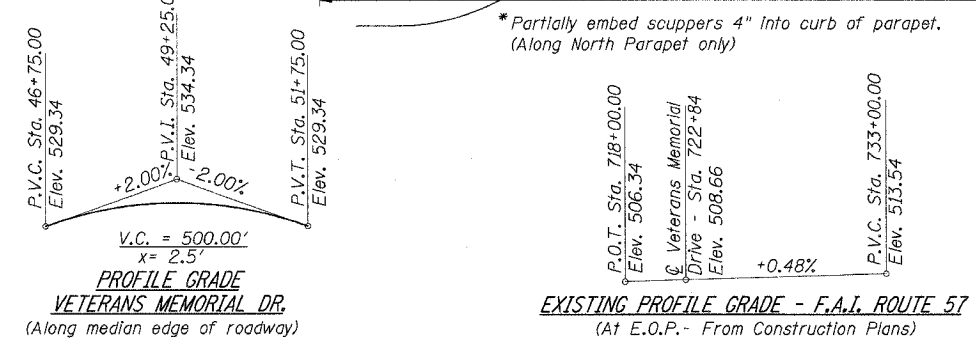
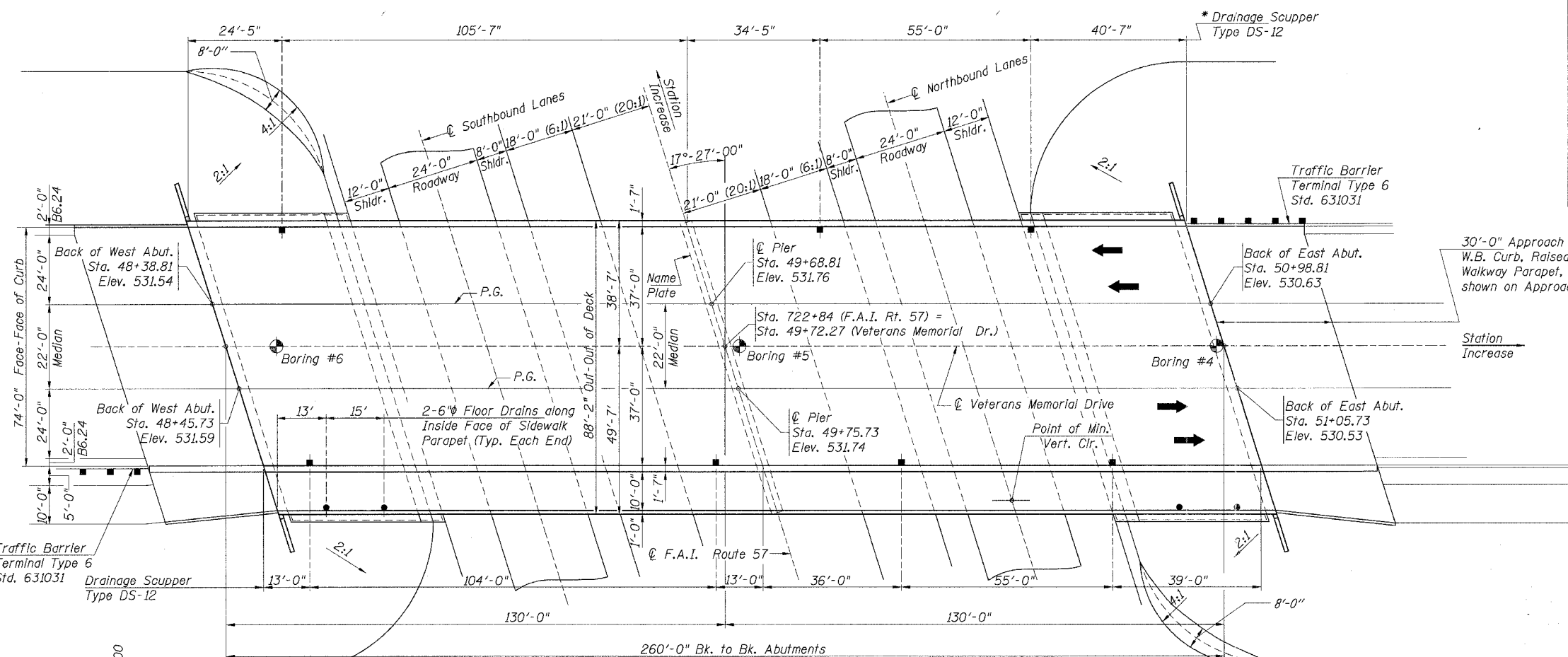
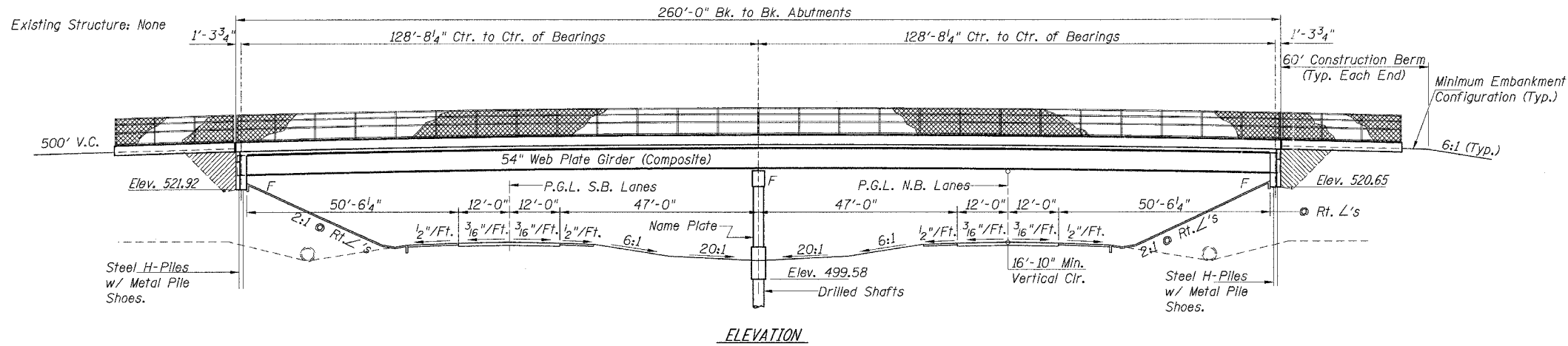


Bench Mark Data: #9805-Top of Iron Pin, flush with ground, located 21.6 ft. east of centerline of Wells By-Pass, 7.9 ft. west of fence corner post, and 360 ft. north of Graham Road. Elev. 507.67

F.A.I. RTE.	SECTION	COUNTY	TOTAL SHEETS	SHEET NO.
57/64	(41-3)HBK	JEFFERSON	518	271
STA.	TO STA.			
FED. ROAD DIST. NO.	ILLINOIS	FED. AID PROJECT		

Sheet 1 of 25



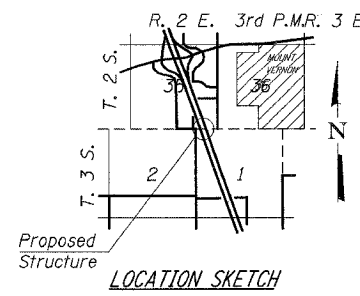
PLAN

DESIGN SPECIFICATIONS
2002 AASHTO

DESIGN STRESSES
 $f_c' = 3,500$ p.s.i.
 $f_y = 60,000$ p.s.i. (Reinforcement)
 $f_y = 50$ K.s.i. (AASHTO M 270, Gr. 50)
 $f_y = 36$ K.s.i. (AASHTO M 270, Gr. 36)

LOADING HS20-44
Allow for 50 lbs./sq.ft. for future wearing surface

SEISMIC DATA
 Seismic Performance Category = B
 Bedrock Acceleration Coefficient (A) = 0.10g
 Site Coefficient (S) = 1.0



TOTAL BILL OF MATERIAL

ITEM	UNIT	SUPER	SUB	TOTAL
Porous Granular Embankment (Special)	Cu. Yd.	-	496	496
Structure Excavation	Cu. Yd.	-	576	576
Concrete Structures	Cu. Yd.	-	285.8	285.8
Concrete Superstructure	Cu. Yd.	814.5	-	814.5
Bridge Deck Grooving	Sq. Yd.	1387	-	1387
Protective Coat	Sq. Yd.	2853	-	2853
Furnishing and Erecting Structural Steel	L. Sum	1	-	-
Stud Shear Connectors	Each	5280	-	5280
Reinforcement Bars, Epoxy Coated	Pound	195970	73440	269410
Reinforcement Bars	Pound	-	4970	4970
Slopedwall 4 Inch	Sq. Yd.	-	971	971
Furnishing Steel Piles HP 12x84	Foot	-	990	990
Driving Piles	Foot	-	990	990
Test Pile Steel HP 12x84	Each	-	2	2
Pile Shoes	Each	-	24	24
Name Plates	Each	1	-	1
Drainage Scupper, DS-12	Each	7	-	7
Bar Splicers	Each	174	-	174
Drilled Shaft In Soil	Cu. Yd.	-	68.4	68.4
Drilled Shaft In Rock	Cu. Yd.	-	16.3	16.3
Bridge Fence Railing	Foot	260	-	260
Parapet Railing	Foot	260	-	260
Floor Drains	Each	4	-	4
Pipe Underdrains for Structures 4"	Foot	-	311	311
Geocomposite Wall Drain	Sq. Yd.	-	187	187
Concrete Encasement	Cu. Yd.	-	8.4	8.4

STATION 49+72.27
 BUILT BY
 STATE OF ILLINOIS
 SEC. (41-3)HBK
 F.A.I. RTE. 57/64
 LOADING HS20
 STR. NO. 041-0108
NAME PLATE
 See Std. 515001



APPROVED
 FOR STRUCTURAL ADEQUACY ONLY

Robert E. Anderson
 ENGINEER OF BRIDGES AND STRUCTURES

SIGNATURE: _____
 DATE SIGNED: 3/21/07
 LIC. EXP. DATE: 11/30/08

GENERAL PLAN and ELEVATION
 VETERANS MEMORIAL DR. over F.A.I. ROUTES 57/64
 SECTION (41-3)HBK
 JEFFERSON COUNTY
 STATION 49+72.27
 STRUCTURE NO. 041-0108

© Copyright Hanson Professional Services Inc. 2007

HANSON

JOB NO. 9852019A
 DATE 03-14-07

March 2007 Submit+rd
 3/21/2007
 A:\68\05\58\20\98\Struct\Sheet\Final Plans 03-18-04\FP-001.dwg
 LAYOUT: GHB 02/02/04
 DRAWN: PWB 02/02/04
 REVIEWED: TEH 02/02/04
 LAYOUT: MMW 03/12/07
 DRAWN: DMB 03/12/07
 REVIEWED: / / /