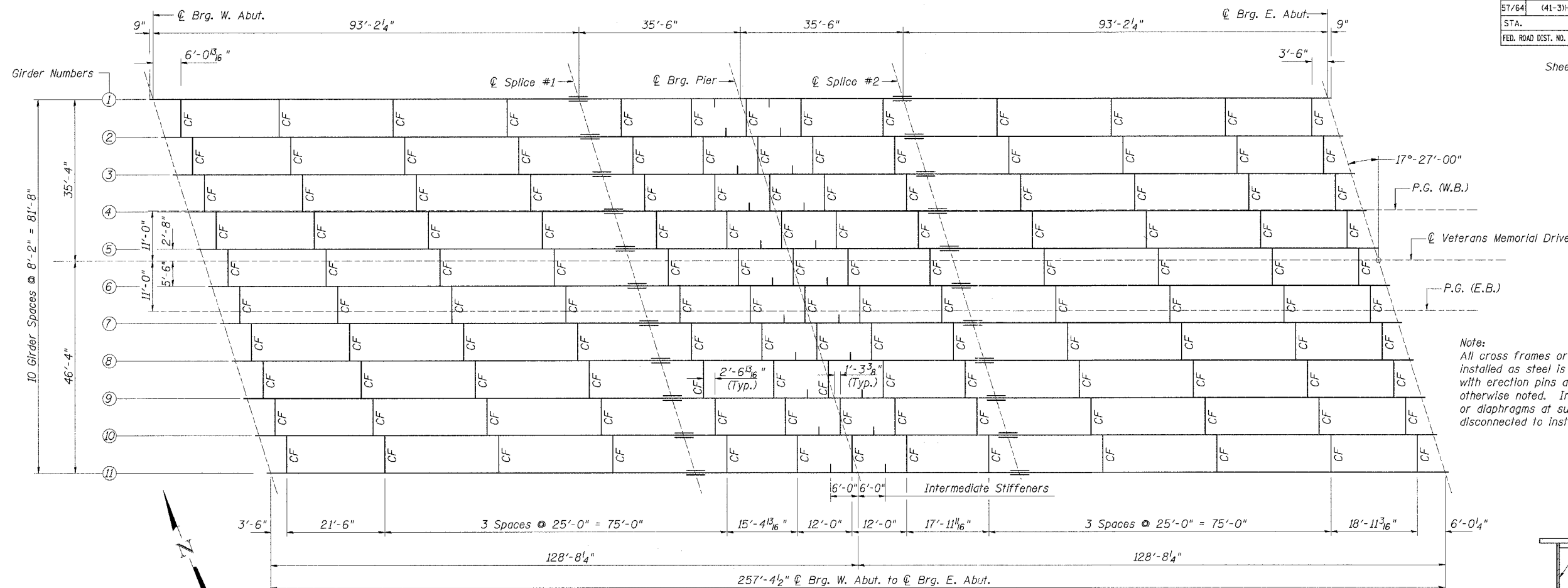


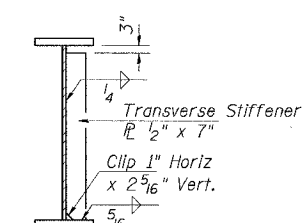
F.A.I. RTE.	SECTION	COUNTY	TOTAL SHEETS	SHEET NO.
57/64	(41-3)HBK	JEFFERSON	518	286
STA.	TO STA.			
FED. ROAD DIST. NO.	ILLINOIS	FED. AID PROJECT		

CONTRACT NO. 98963

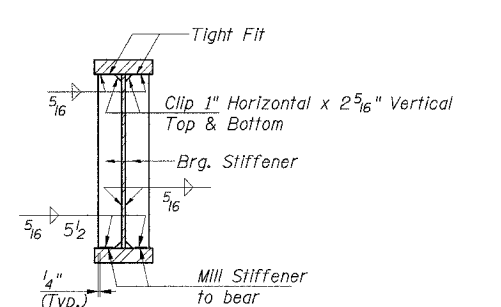
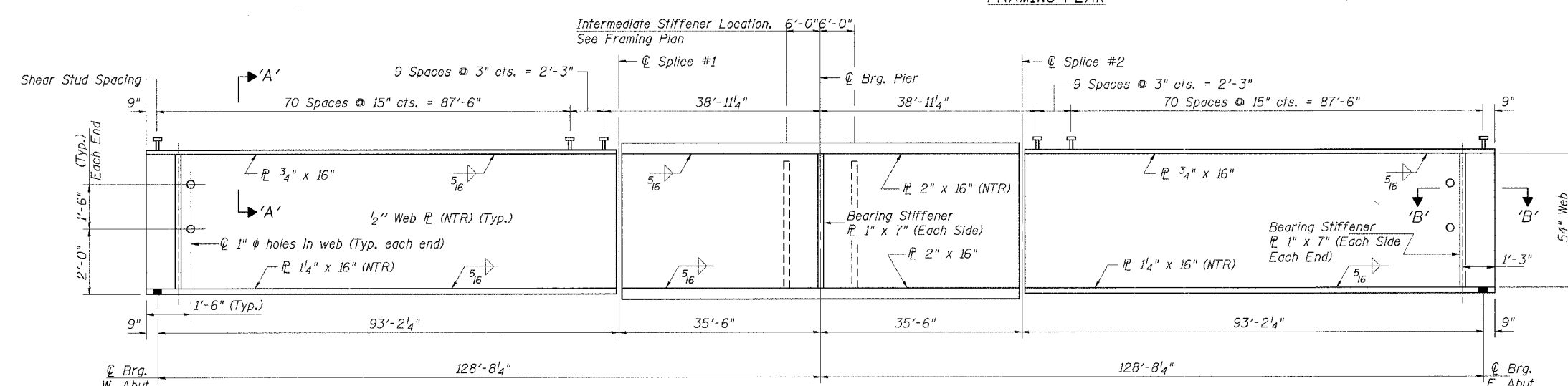
Sheet 16 of 25



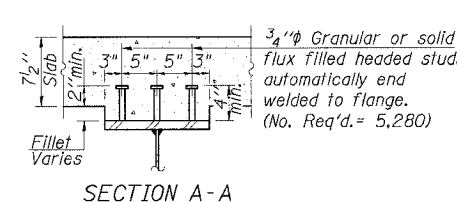
Note:
All cross frames or diaphragms shall be installed as steel is erected and secured with erection pins and bolts except as otherwise noted. Individual cross frames or diaphragms at supports may be temporarily disconnected to install bearing anchor rods.



INTERMEDIATE STIFFENER DETAIL

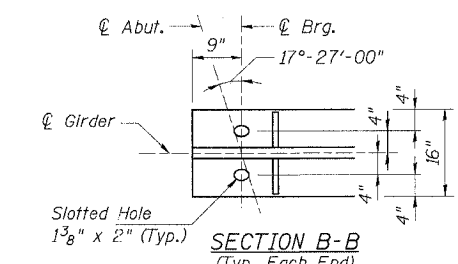


BEARING STIFFENER DETAIL



SECTION A-A

All plates of the girders, including bearing stiffeners and transverse stiffeners, shall be AASHTO M270 Grade 50.
For cross frame details and splice plate details see sheet 17 of 25.
Load carrying components designated "NTR" shall conform to the Supplemental Requirements for Notch Toughness, Zone 2.



SECTION B-B (Typ. Each End)

STRUCTURAL STEEL
VETERANS MEMORIAL DR. over F.A.I. ROUTES 57/64
SECTION (41-3)HBK
JEFFERSON COUNTY
STATION 49+72.27
STRUCTURE NO. 041-0108

© Copyright Hanson Professional Services Inc. 2007



JOB NO.
9852019A
DATE
03-14-07

March 2007 Submittal

LAYOUT	GR	02/02/04	MAN	03/12/07
DRAWN	DAP	02/02/04	DAB	03/12/07
REVIEWED	TEH	02/02/04		

05/01/2007 03:43 PM \$FILES