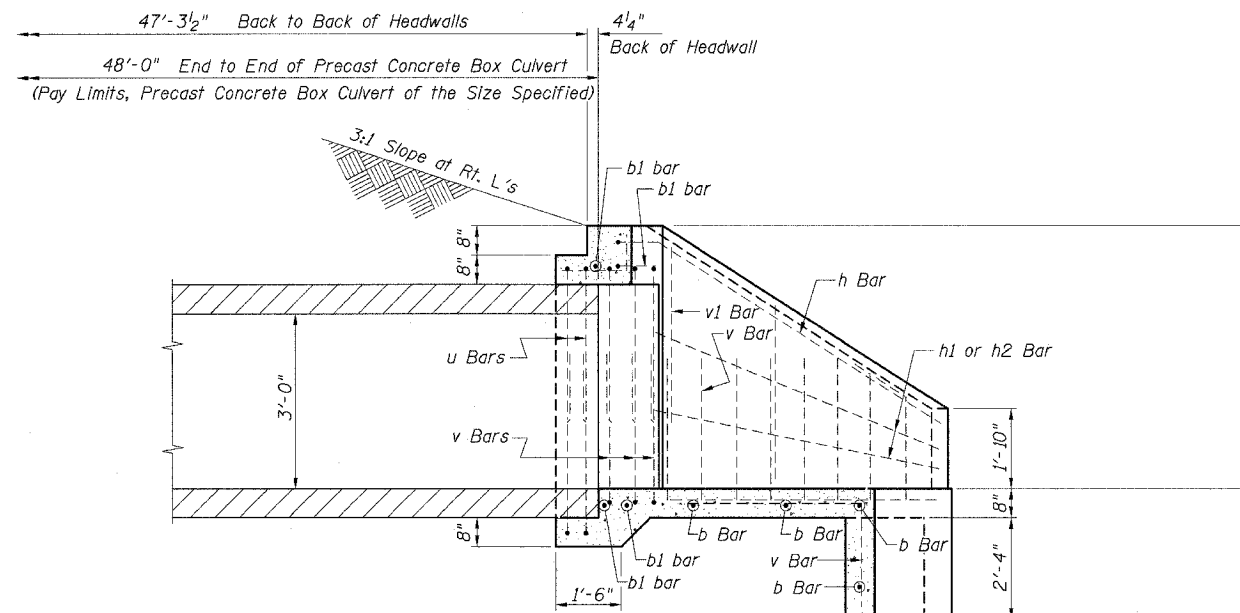
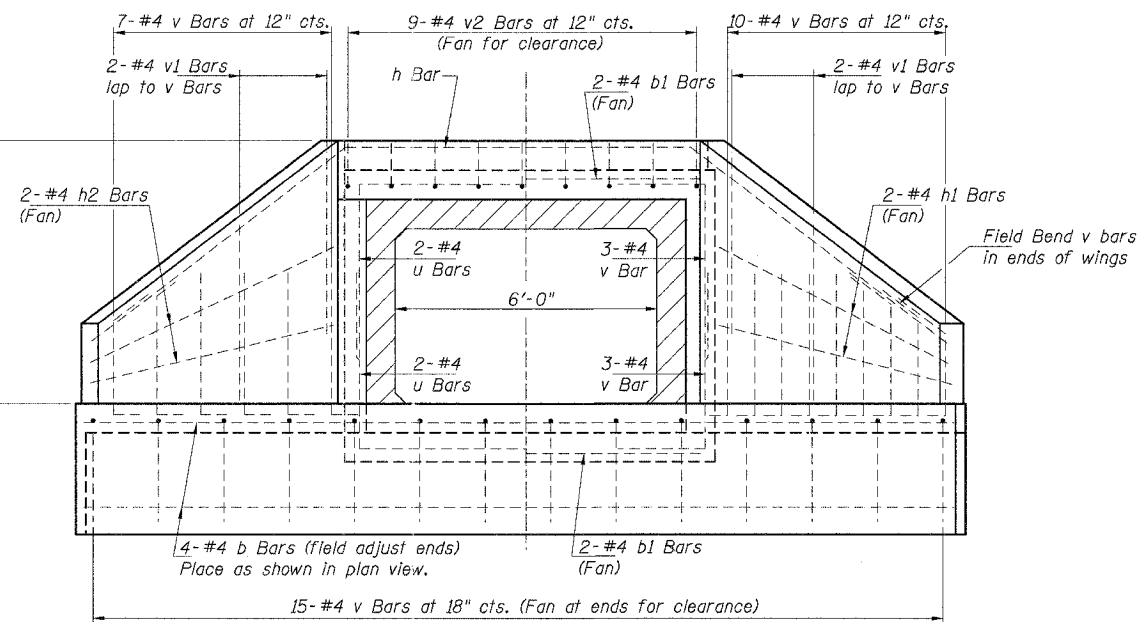


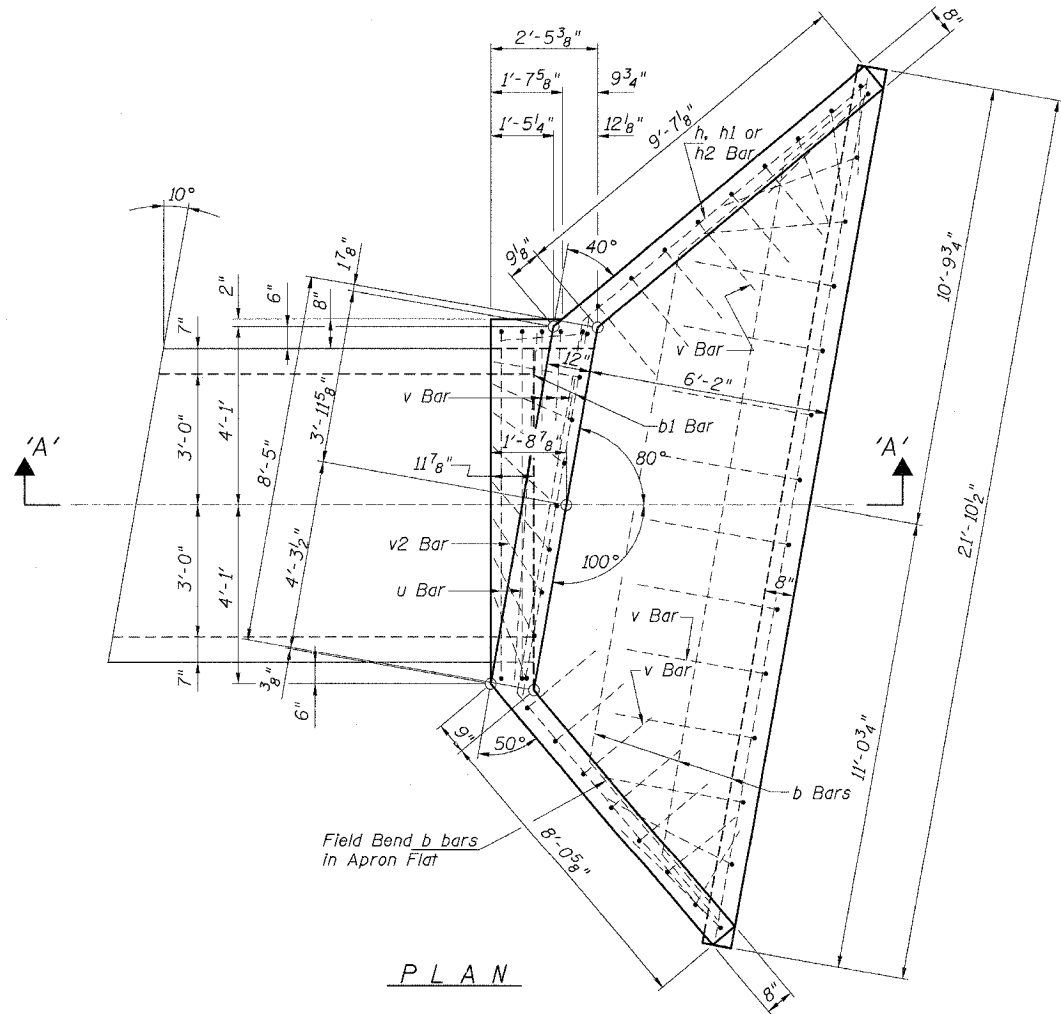
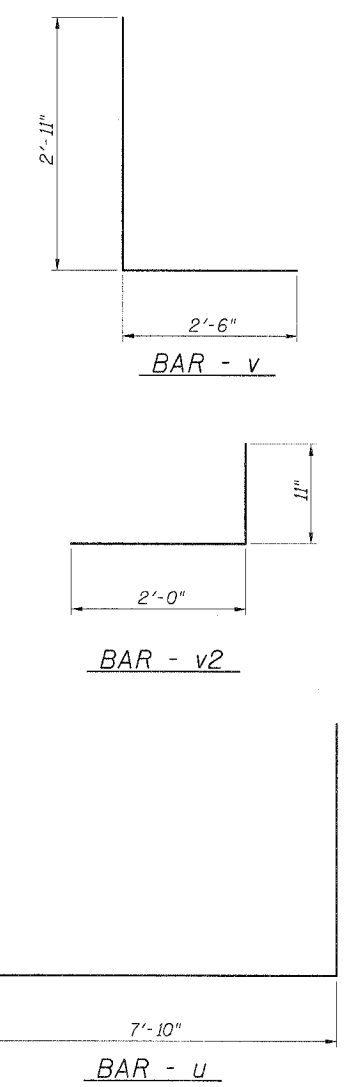
F.A.I. RTE.	SECTION	COUNTY	TOTAL SHEETS	SHEET NO.
57/64	(41-3)HBK	JEFFERSON	118	298
STA.	TO STA.			
FED. ROAD DIST. NO.	ILLINOIS	FED. AID PROJECT		
CONTRACT NO. 98963				



SECTION 'A'-'A'  
(Along C of Culvert)



END VIEW



PLAN

REINFORCEMENT TABLE

(One End Section)

Bar	No.	Size	Length	Shape
b	4	#4	21'-4"	—
b1	4	#4	8'-5"	—
h	1	#4	27'-7"	∩
h1	2	#4	10'-0"	—
h2	2	#4	8'-9"	—
u	4	#4	14'-4"	□
v	38	#4	5'-5"	—
v1	4	#4	3'-9"	—
v2	9	#4	2'-11"	—

GENERAL NOTES

Build tops of headwalls parallel to grade line.  
 If embankment slope above headwall is flatter than 2:1, provide wings for 2:1 slope.  
 Reinforcing shapes shown, may be either shop or field formed.  
 The following quantities are for 1 (one) Concrete End Section and are for estimation purposes only. The end section shall be paid for at the unit price each for 'Box Culvert End Sections' of the size specified and shall include the cost of concrete and steel reinforcement.  
 Cubic Yards of Concrete = 6.8 Cu. Yds.  
 Pounds of Reinforcement Bars = 330 Lbs.

For construction requirements, See Section 540 of the Illinois Department of Transportation, Standard Specifications for Road and Bridge Construction.

REINFORCED CONCRETE END SECTION  
 FOR PRECAST BOX CULVERT  
 36" HIGH x 72" WIDE  
 AT 42nd STREET & ILLINOIS POWER ACCESS ROAD

© Copyright Hanson Professional Services Inc. 2007



JOB NO.  
98S2019A  
DATE  
03-14-07

3/21/2007  
 H:\66485\98S2019A\Struct\Sheet\Final Plans C03-B04-04-F-42nd Street Culvert.dwg  
 LAYOUT  
 REF  
 DRAWN  
 REVIEWED  
 DATE  
 05/20/04  
 05/20/04  
 05/20/04