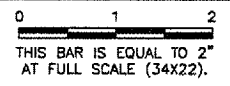


REVISIONS		
NUMBER	BY	DATE

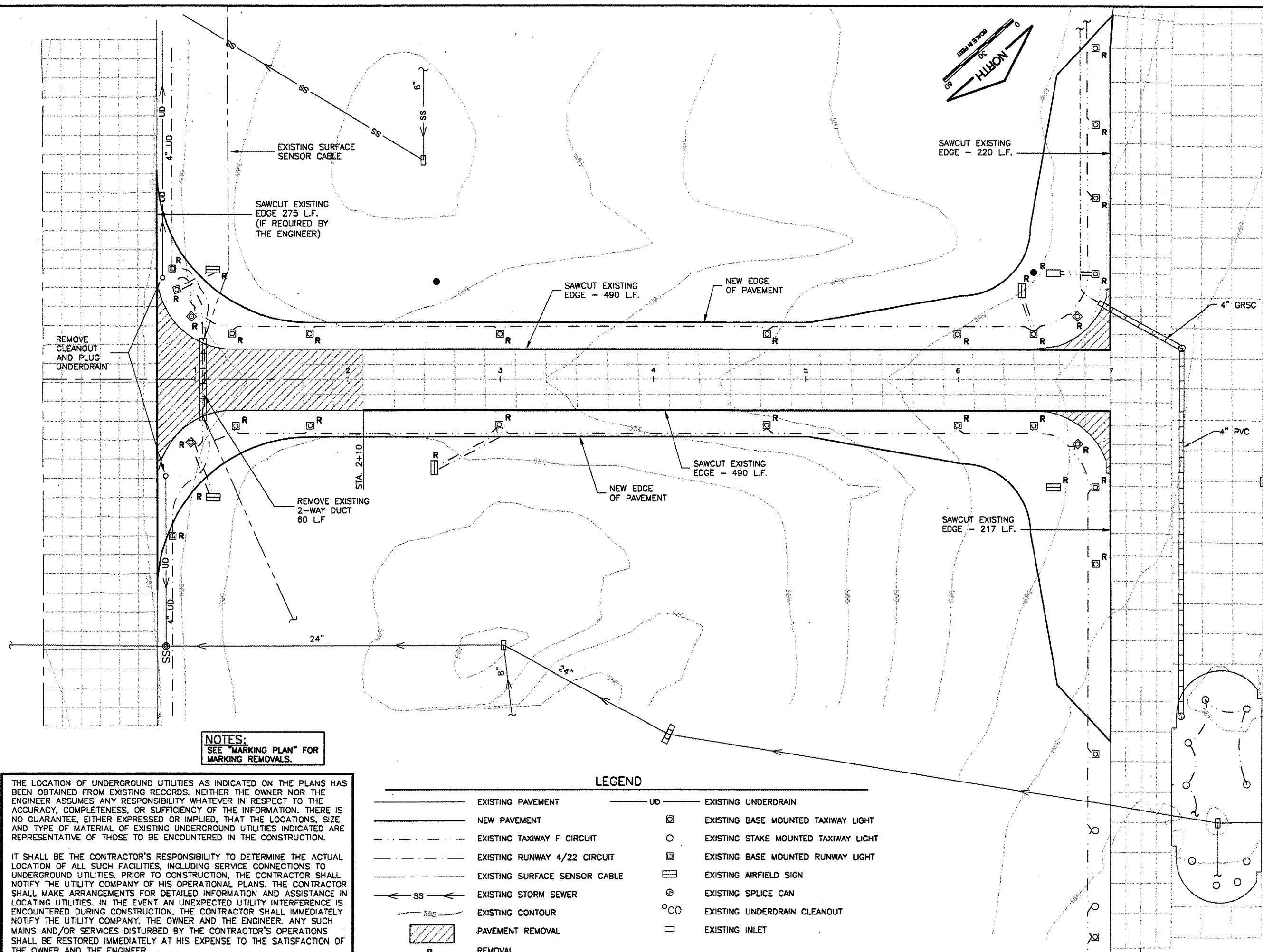


SPRINGFIELD AIRPORT AUTHORITY
ABRAHAM LINCOLN CAPITAL AIRPORT
SPRINGFIELD, ILLINOIS

WIDEN TAXIWAY F
EXISTING CONDITIONS & REMOVALS

© Copyright CMT, Inc.
CMT
 CRAWFORD, MURPHY & TILLY, INC.
 CONSULTING ENGINEERS
 License No. 84-000519

DESIGN BY: RLV
 DRAWN BY: DPA
 CHECKED BY: RW
 APPROVED BY: RW
 DATE: AUGUST 07, 2007
 JOB No: 07035-02-00
 IL PROJ. NO. SPL-3711
 AIP PROJ. NO. 3-17-0096-XX



NOTES:
 SEE "MARKING PLAN" FOR
 MARKING REMOVALS.

THE LOCATION OF UNDERGROUND UTILITIES AS INDICATED ON THE PLANS HAS BEEN OBTAINED FROM EXISTING RECORDS. NEITHER THE OWNER NOR THE ENGINEER ASSUMES ANY RESPONSIBILITY WHATEVER IN RESPECT TO THE ACCURACY, COMPLETENESS, OR SUFFICIENCY OF THE INFORMATION. THERE IS NO GUARANTEE, EITHER EXPRESSED OR IMPLIED, THAT THE LOCATIONS, SIZE AND TYPE OF MATERIAL OF EXISTING UNDERGROUND UTILITIES INDICATED ARE REPRESENTATIVE OF THOSE TO BE ENCOUNTERED IN THE CONSTRUCTION.

IT SHALL BE THE CONTRACTOR'S RESPONSIBILITY TO DETERMINE THE ACTUAL LOCATION OF ALL SUCH FACILITIES, INCLUDING SERVICE CONNECTIONS TO UNDERGROUND UTILITIES. PRIOR TO CONSTRUCTION, THE CONTRACTOR SHALL NOTIFY THE UTILITY COMPANY OF HIS OPERATIONAL PLANS. THE CONTRACTOR SHALL MAKE ARRANGEMENTS FOR DETAILED INFORMATION AND ASSISTANCE IN LOCATING UTILITIES. IN THE EVENT AN UNEXPECTED UTILITY INTERFERENCE IS ENCOUNTERED DURING CONSTRUCTION, THE CONTRACTOR SHALL IMMEDIATELY NOTIFY THE UTILITY COMPANY, THE OWNER AND THE ENGINEER. ANY SUCH MAINS AND/OR SERVICES DISTURBED BY THE CONTRACTOR'S OPERATIONS SHALL BE RESTORED IMMEDIATELY AT HIS EXPENSE TO THE SATISFACTION OF THE OWNER AND THE ENGINEER.

LEGEND

- | | | | |
|--------|-------------------------------|--------|--------------------------------------|
| — | EXISTING PAVEMENT | — UD — | EXISTING UNDERDRAIN |
| — | NEW PAVEMENT | □ | EXISTING BASE MOUNTED TAXIWAY LIGHT |
| - - - | EXISTING TAXIWAY F CIRCUIT | ○ | EXISTING STAKE MOUNTED TAXIWAY LIGHT |
| - - - | EXISTING RUNWAY 4/22 CIRCUIT | ▣ | EXISTING BASE MOUNTED RUNWAY LIGHT |
| - - - | EXISTING SURFACE SENSOR CABLE | ▭ | EXISTING AIRFIELD SIGN |
| ← SS ← | EXISTING STORM SEWER | ⊙ | EXISTING SPLICE CAN |
| SSS | EXISTING CONTOUR | ○ CO | EXISTING UNDERDRAIN CLEANOUT |
| ▨ | PAVEMENT REMOVAL | □ | EXISTING INLET |
| R | REMOVAL | | |