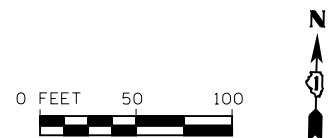
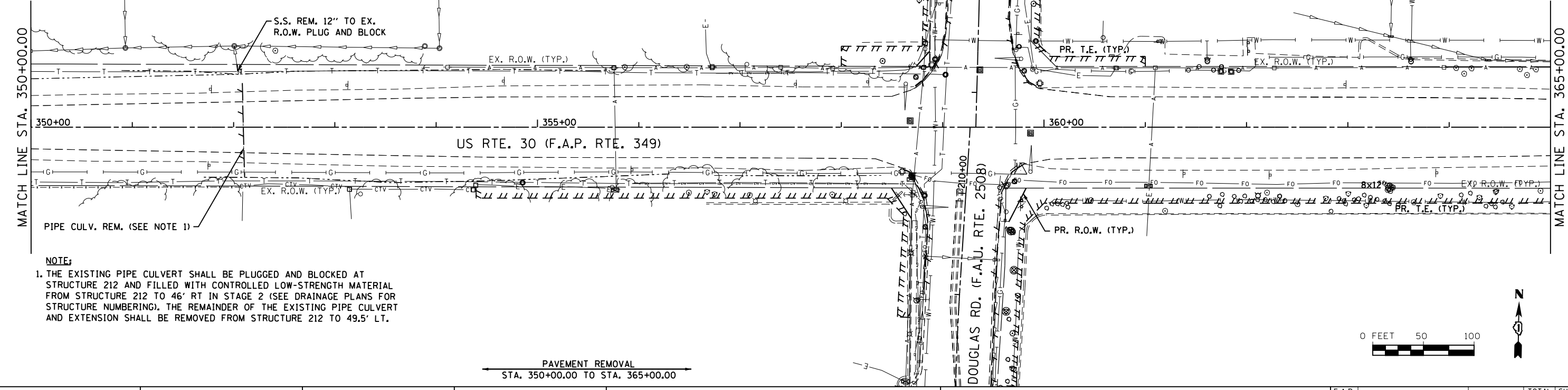


**LEGEND**

	MISC. REMOVAL		STRUCTURE TO BE REMOVED
	MEDIAN REMOVAL		LINEAR REMOVAL ITEM
	PAVED SHOULDER REMOVAL		TREE REMOVAL
			ITEM REMOVAL

PAVEMENT REMOVAL  
STA. 335+00.00 TO STA. 350+00.00

SEE DOUGLAS RD. REMOVAL SHEET  
FOR ADDITIONAL REMOVAL ITEMS. (TYP.)



**NOTE:**  
1. THE EXISTING PIPE CULVERT SHALL BE PLUGGED AND BLOCKED AT STRUCTURE 212 AND FILLED WITH CONTROLLED LOW-STRENGTH MATERIAL FROM STRUCTURE 212 TO 46' RT IN STAGE 2 (SEE DRAINAGE PLANS FOR STRUCTURE NUMBERING). THE REMAINDER OF THE EXISTING PIPE CULVERT AND EXTENSION SHALL BE REMOVED FROM STRUCTURE 212 TO 49.5' LT.

PAVEMENT REMOVAL  
STA. 350+00.00 TO STA. 365+00.00

1170 SOUTH HOUBOLT ROAD  
JOLIET, ILLINOIS 60431  
(815) 744-4200  
**STRAND**  
ENGINEERS

FILE NAME =	USER NAME = amanda.j	DESIGNED - MAG	REVISED -
st\joi\6300--6399\6346\023\micros\shd\060132-shd-removal02.dgn		DRAWN - BJF	REVISED -
		CHECKED - SJN	REVISED -
		DATE -	REVISED -

STATE OF ILLINOIS  
DEPARTMENT OF TRANSPORTATION

REMOVAL SHEETS

SCALE: SHEET NO. OF SHEETS STA. 335+00 TO STA. 365+00

F.A.P. RTE.	SECTION	COUNTY	TOTAL SHEETS	SHEET NO.
349	11 WRS-3	KENDALL	527	72
CONTRACT NO. 60132				

FED. ROAD DIST. NO. 1 ILLINOIS FED. AID PROJECT