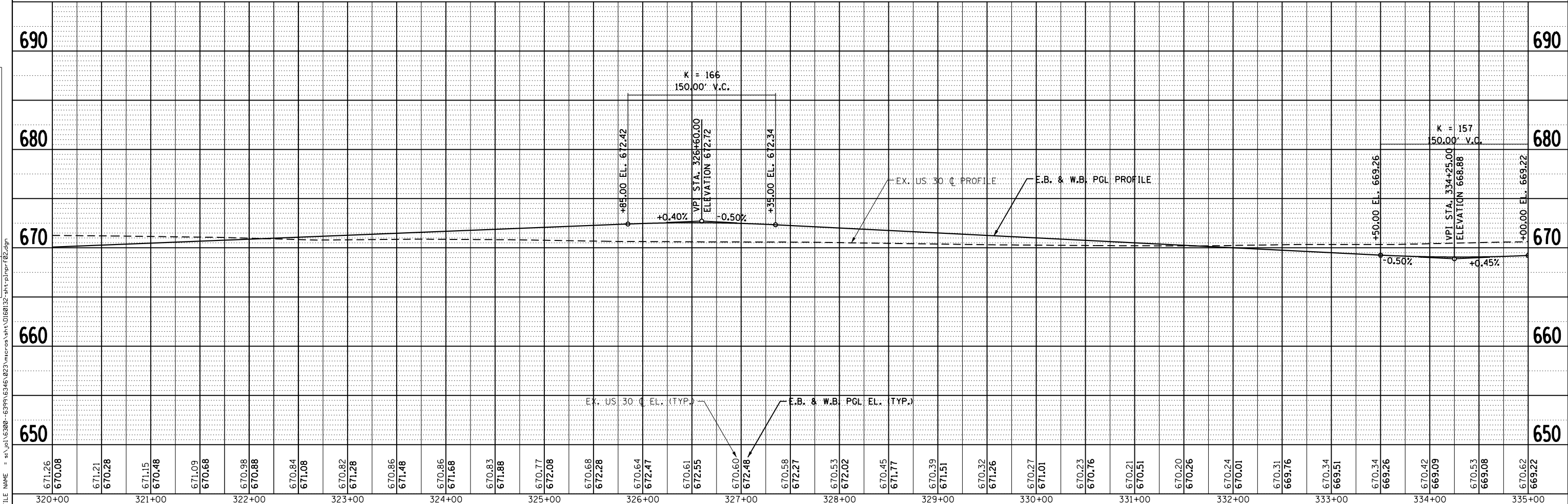
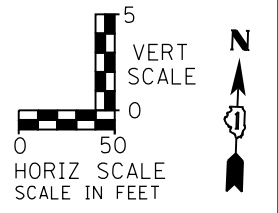
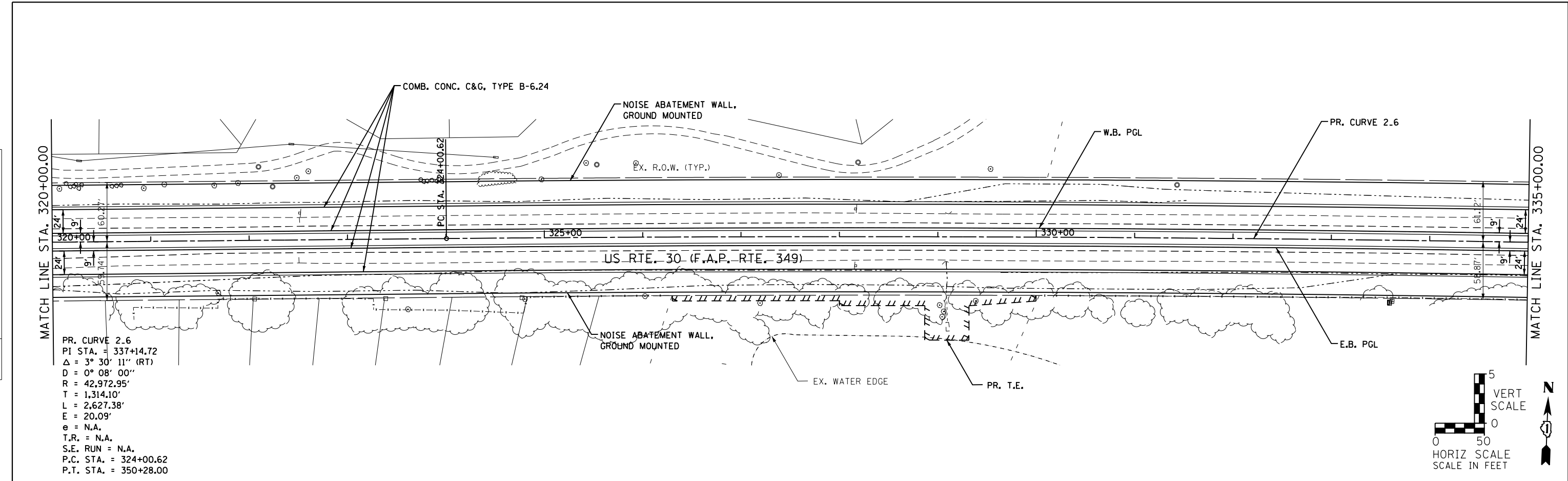


PLAN	SURVEYED	DATE
	PLOTTED	BY
	ALIGNED	
	CHECKED	
	NO. _____	
	FILE NAME	

PROFILE	SURVEYED	DATE
	PLOTTED	BY
	GRADES CHECKED	
	STRUCTURE NOTATIONS CHECKED	
	NO. _____	
	FILE NAME	



1170 SOUTH HOUBOLT ROAD  
JOLIET, ILLINOIS 60431  
(815) 744-4200

USER NAME = amanda_j	DESIGNED - MAG	REVISED -
PLOT SCALE = 100.0000' / 1"	CHECKED - SJN	REVISED -
PLOT DATE = 5/10/2012	DRAWN - BJF	REVISED -
	CHECKED -	REVISED -

STATE OF ILLINOIS  
DEPARTMENT OF TRANSPORTATION

PLAN AND PROFILE			
SCALE: AS SHOWN	SHEET NO.	OF	SHEETS
STA. 320+00 TO STA. 335+00			

F.A.P. RTE. 349	SECTION 11 WRS-3	COUNTY KENDALL	TOTAL SHEETS 527	SHEET NO. 78
CONTRACT NO. 60132				
FED. ROAD DIST. NO. 1 ILLINOIS FED. AID PROJECT				