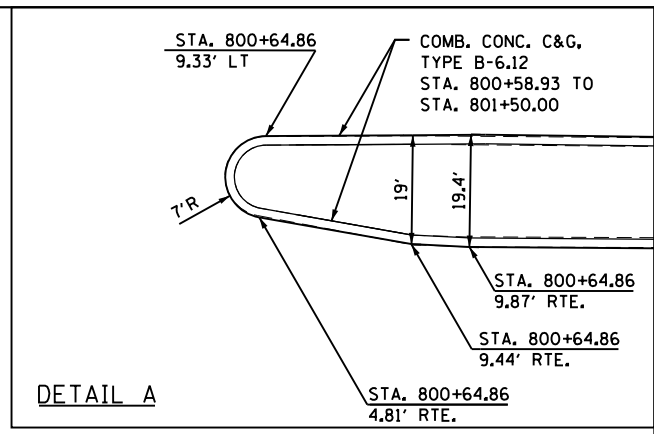
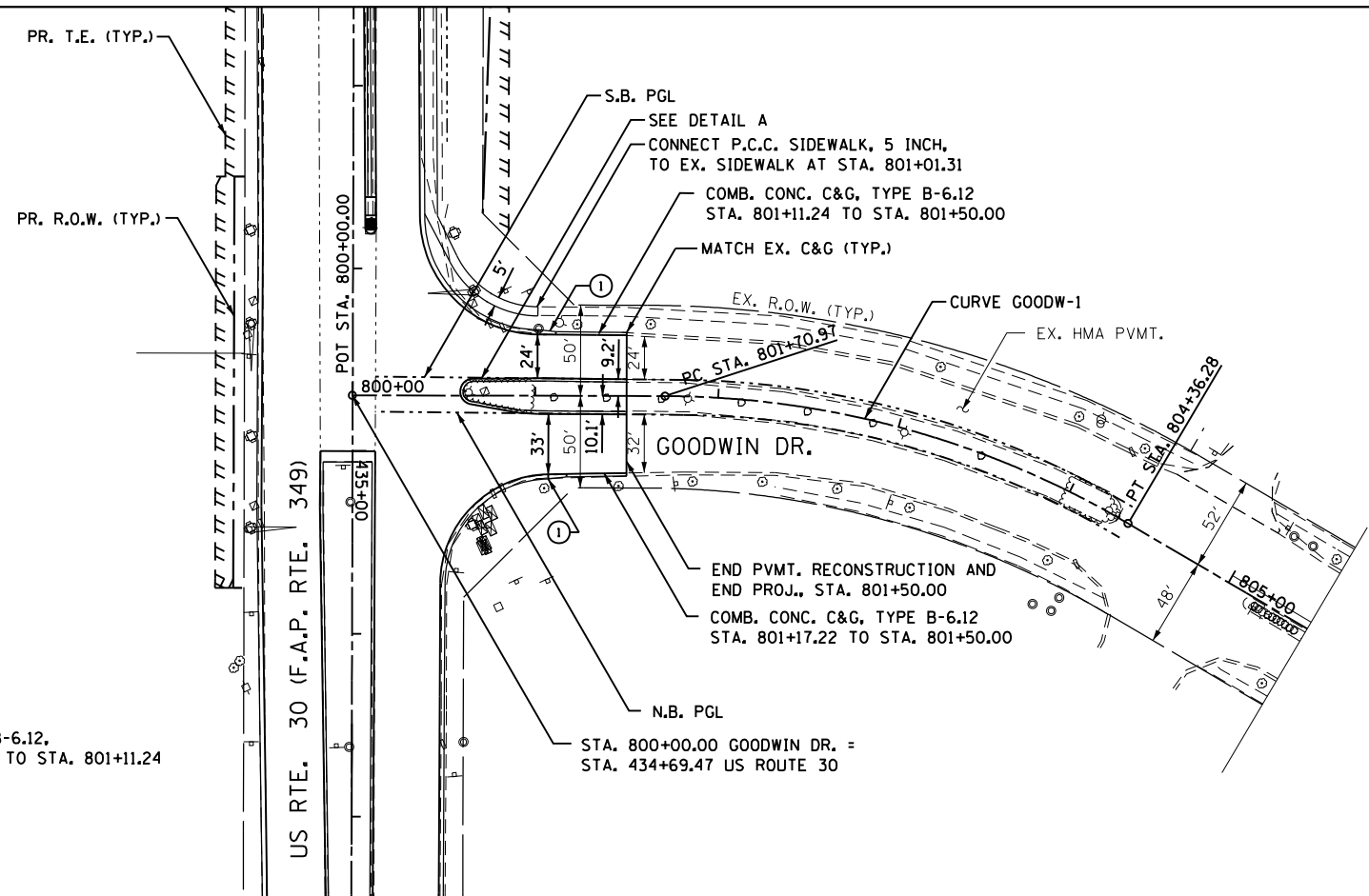


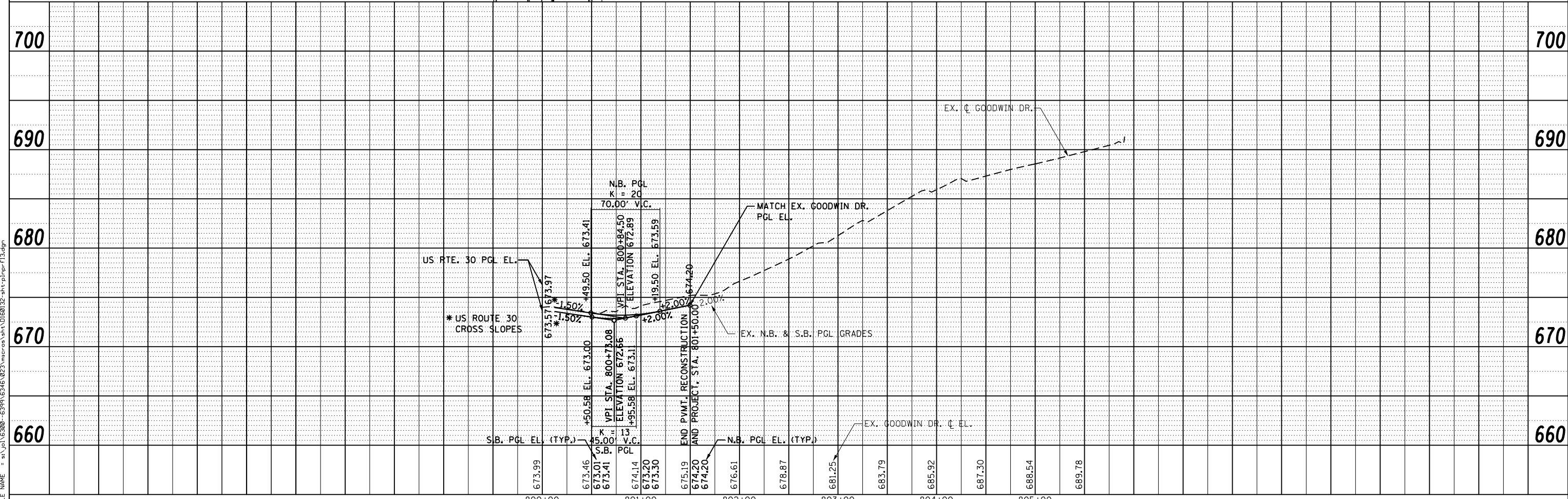
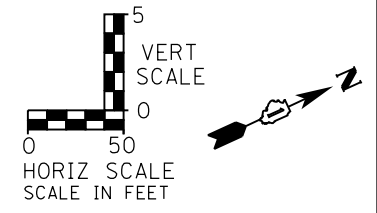
PLAN	SURVEYED	DATE
	PLOTTED	BY
	GRADES CHECKED	
	STRUCTURE NOT AT THIS OFFICE	
	NO. _____	
	NOTE BOOK	
	NO. _____	
	FILE NAME	

PROFILE	SURVEYED	DATE
	PLOTTED	BY
	GRADES CHECKED	
	STRUCTURE NOT AT THIS OFFICE	
	NO. _____	
	NOTE BOOK	
	NO. _____	
	FILE NAME	

FILE NAME = s:\proj\6300-6399\6346\023\micro\shh\0180132-shh\p13.dgn



NOTES:
 ① TRANSITION FROM COMBINED CONCRETE C&G, TYPE B-6.24 TO B-6.12,
 RT - STA. 801+07.22 TO STA. 801+17.22, LT - STA. 801+01.24 TO STA. 801+11.24



STRAND ASSOCIATES, INC.
 1170 SOUTH HOUBOLT ROAD
 JOLIET, ILLINOIS 60431
 (815) 744-4200

USER NAME = amanda_j	DESIGNED - MAG	REVISED -
PLOT SCALE = 100.0000' / 1"	CHECKED - SJN	REVISED -
PLOT DATE = 5/10/2012	DRAWN - BJF	REVISED -
	CHECKED -	REVISED -

**STATE OF ILLINOIS
 DEPARTMENT OF TRANSPORTATION**

GOODWIN PLAN AND PROFILE			
SCALE: AS SHOWN	SHEET NO.	OF SHEETS	STA. TO STA.

F.A.P. RTE. 349	SECTION 11 WRS-3	COUNTY KENDALL	TOTAL SHEETS 527	SHEET NO. 89
CONTRACT NO. 60132				
FED. ROAD DIST. NO. 1 ILLINOIS FED. AID PROJECT				