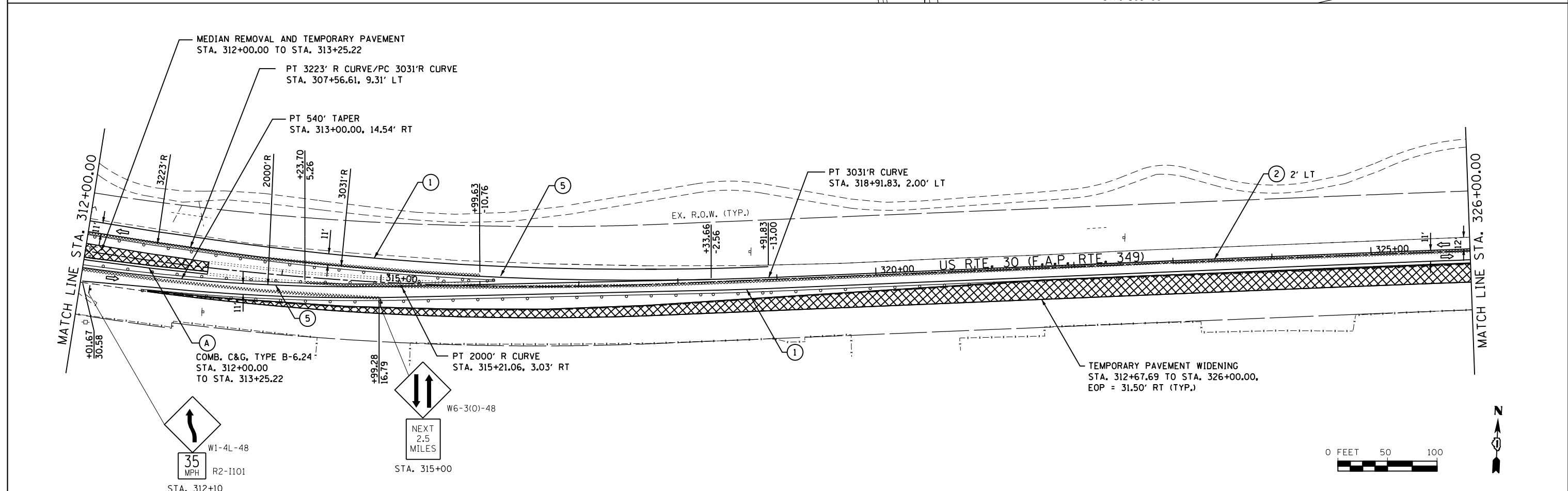
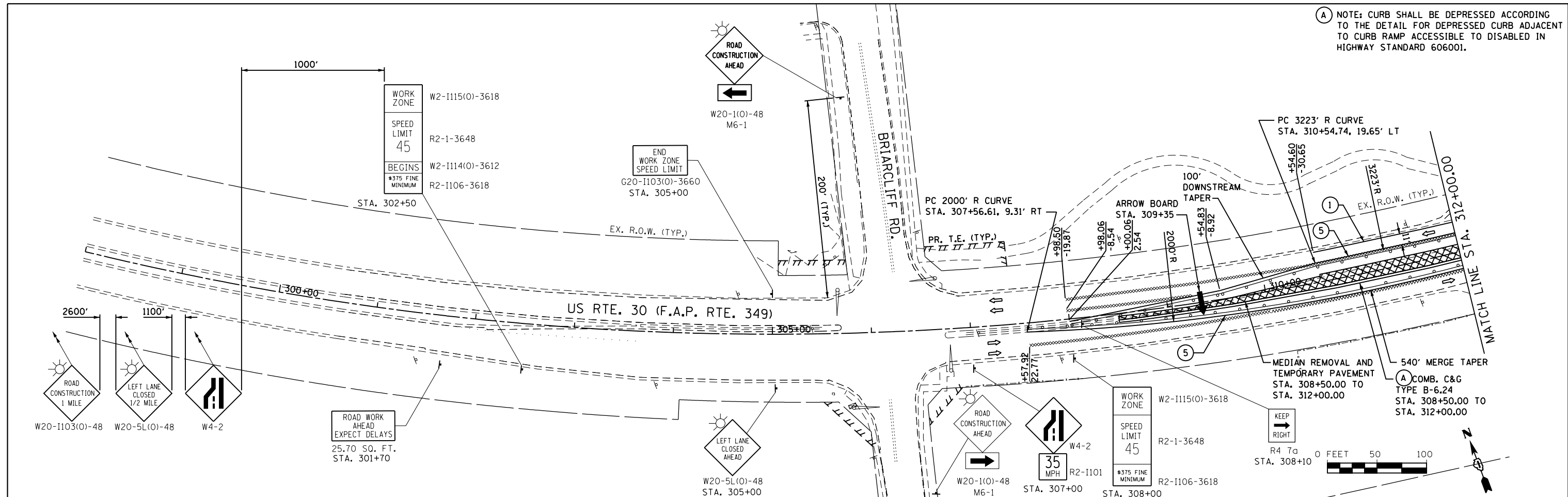


(A) NOTE: CURB SHALL BE DEPRESSED ACCORDING TO THE DETAIL FOR DEPRESSED CURB ADJACENT TO CURB RAMP ACCESSIBLE TO DISABLED IN HIGHWAY STANDARD 606001.



1170 SOUTH HOUBOLT ROAD
JOLIET, ILLINOIS 60431
(815) 744-4200



FILE NAME =	USER NAME = amandaj	DESIGNED -	REVISED -
S:\JOL\6300--6399\6346\B23\Micros\CADD	Sheets\DI60132-shit-staging01.dgn	DRAWN -	REVISED -
	PLOT SCALE = 100.0000' / in.	CHECKED -	REVISED -
	PLOT DATE = 8/1/2012	DATE -	REVISED -

STATE OF ILLINOIS
DEPARTMENT OF TRANSPORTATION

MAINTENANCE OF TRAFFIC PRE-STAGE			
SCALE:	SHEET NO.	OF SHEETS	STA. 298+00.00 TO STA. 326+00.00

F.A.P. RTE.	SECTION	COUNTY	TOTAL SHEETS	SHEET NO.
349	11 WRS-3	KENDALL	527	95
CONTRACT NO. 60132				
FED. ROAD DIST. NO. 1 ILLINOIS FED. AID PROJECT				