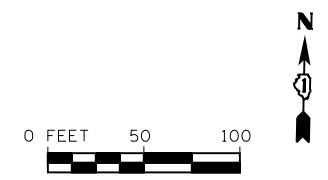
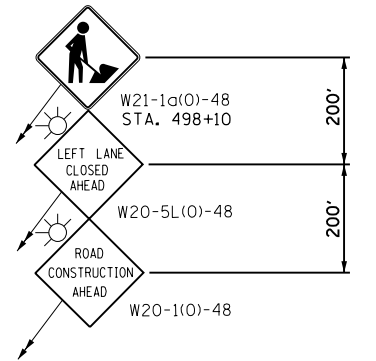
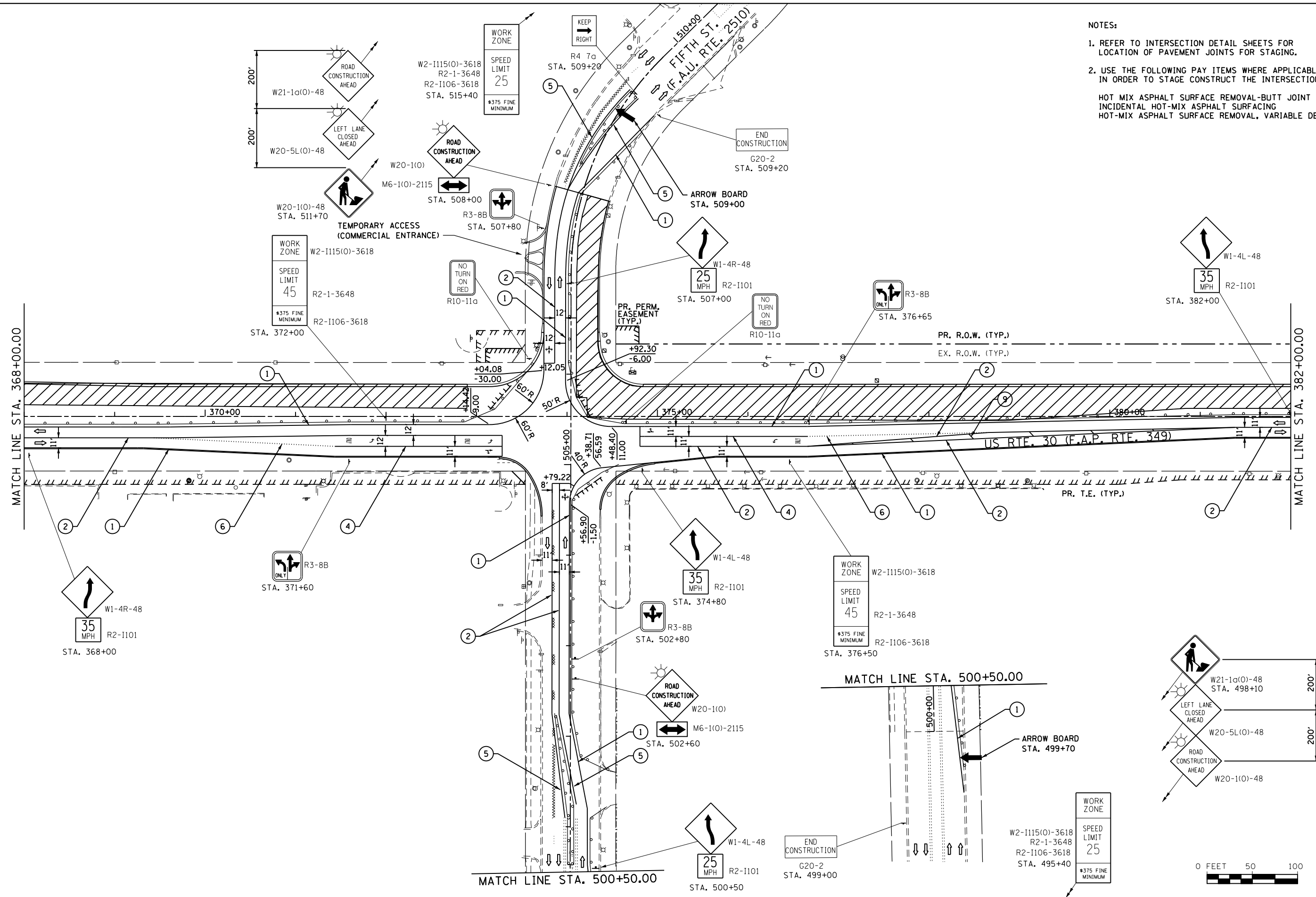


- NOTES:
- REFER TO INTERSECTION DETAIL SHEETS FOR LOCATION OF PAVEMENT JOINTS FOR STAGING.
 - USE THE FOLLOWING PAY ITEMS WHERE APPLICABLE IN ORDER TO STAGE CONSTRUCT THE INTERSECTION:
- HOT MIX ASPHALT SURFACE REMOVAL-BUTT JOINT
 INCIDENTAL HOT-MIX ASPHALT SURFACING
 HOT-MIX ASPHALT SURFACE REMOVAL, VARIABLE DEPTH



FILE NAME = SA\JOL\63300-6399\6346\023\Micro\CAD\ Sheets\0160132-shr-staging12b.dgn

STRAND
 ENGINEERS
 1170 SOUTH HOUBOLT ROAD
 JOLIET, ILLINOIS 60431
 (815) 744-4200

USER NAME = amanda.j
 DESIGNED -
 DRAWN -
 PLOT SCALE = 100.0000' / in.
 CHECKED -
 PLOT DATE = 8/1/2012
 DATE -

DESIGNED -
 DRAWN -
 CHECKED -
 DATE -

REVISED -
 REVISED -
 REVISED -
 REVISED -

**STATE OF ILLINOIS
 DEPARTMENT OF TRANSPORTATION**

**MAINTENANCE OF TRAFFIC
 STAGE 1b**
 SCALE: AS SHOWN SHEET NO. OF SHEETS STA. 368+00.00 TO STA. 382+00.00

F.A.P. RTE.	SECTION	COUNTY	TOTAL SHEETS	SHEET NO.
349	11 WRS-3	KENDALL	527	111
CONTRACT NO. 60132				
FED. ROAD DIST. NO. 1 ILLINOIS FED. AID PROJECT				