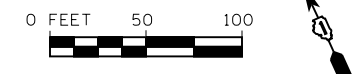
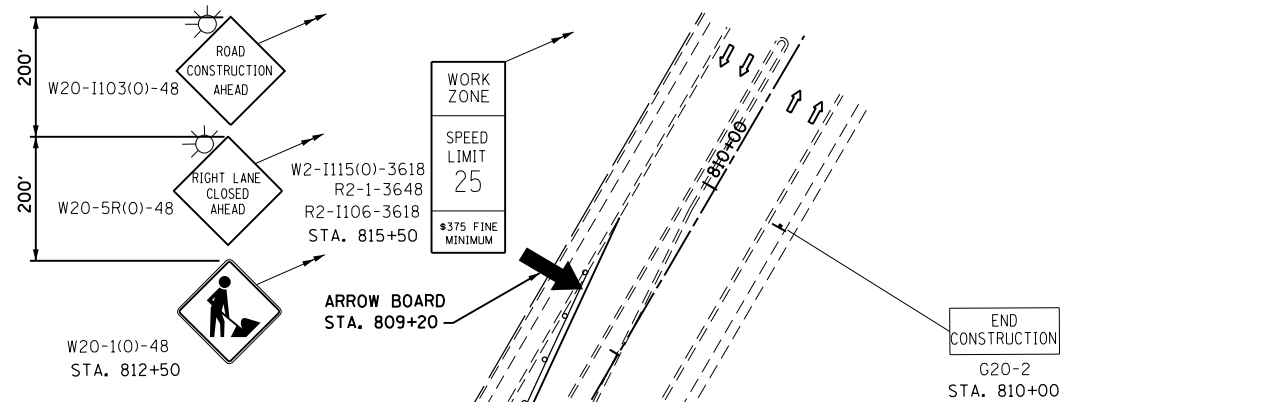
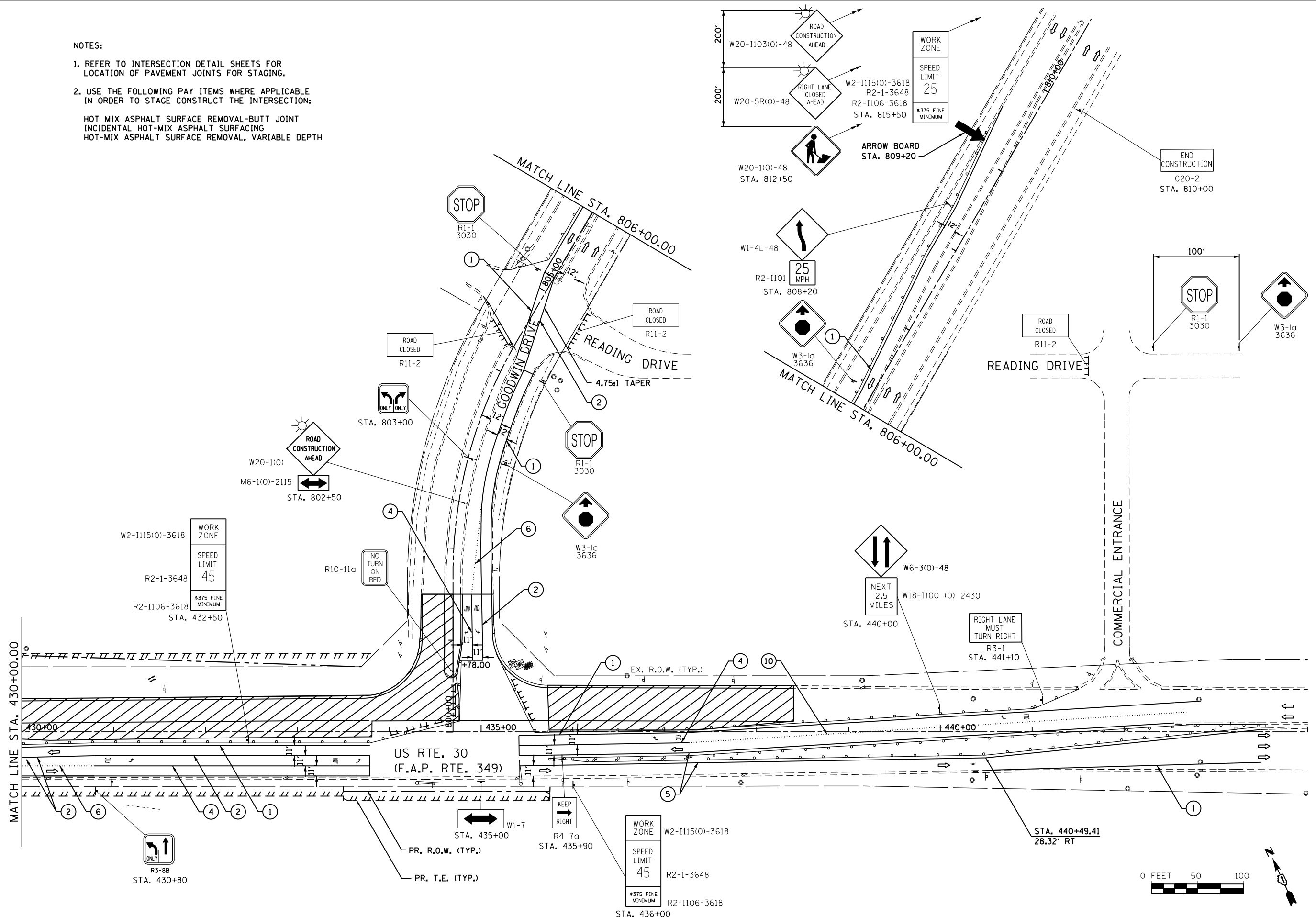


**NOTES:**

1. REFER TO INTERSECTION DETAIL SHEETS FOR LOCATION OF PAVEMENT JOINTS FOR STAGING.
2. USE THE FOLLOWING PAY ITEMS WHERE APPLICABLE IN ORDER TO STAGE CONSTRUCT THE INTERSECTION:

HOT MIX ASPHALT SURFACE REMOVAL-BUTT JOINT  
 INCIDENTAL HOT-MIX ASPHALT SURFACING  
 HOT-MIX ASPHALT SURFACE REMOVAL, VARIABLE DEPTH



FILE NAME = S:\JOLI\63300-63999\6346\023\Micro\CAD Sheets\01680132-sht-staging15a.dgn



USER NAME = amanda_j	DESIGNED -	REVISED -
PLOT SCALE = 100.0000' / 1"	DRAWN -	REVISED -
PLOT DATE = 8/6/2012	CHECKED -	REVISED -
	DATE -	REVISED -

**STATE OF ILLINOIS  
 DEPARTMENT OF TRANSPORTATION**

**MAINTENANCE OF TRAFFIC  
 STAGE 1a**

SCALE: AS SHOWN    SHEET NO.    OF    SHEETS    STA. 430+00.00 TO STA. 439+00.00

F.A.P. RTE.	SECTION	COUNTY	TOTAL SHEETS	SHEET NO.
349	11 WRS-3	KENDALL	527	116
CONTRACT NO. 60132				
FED. ROAD DIST. NO. 1 ILLINOIS FED. AID PROJECT				