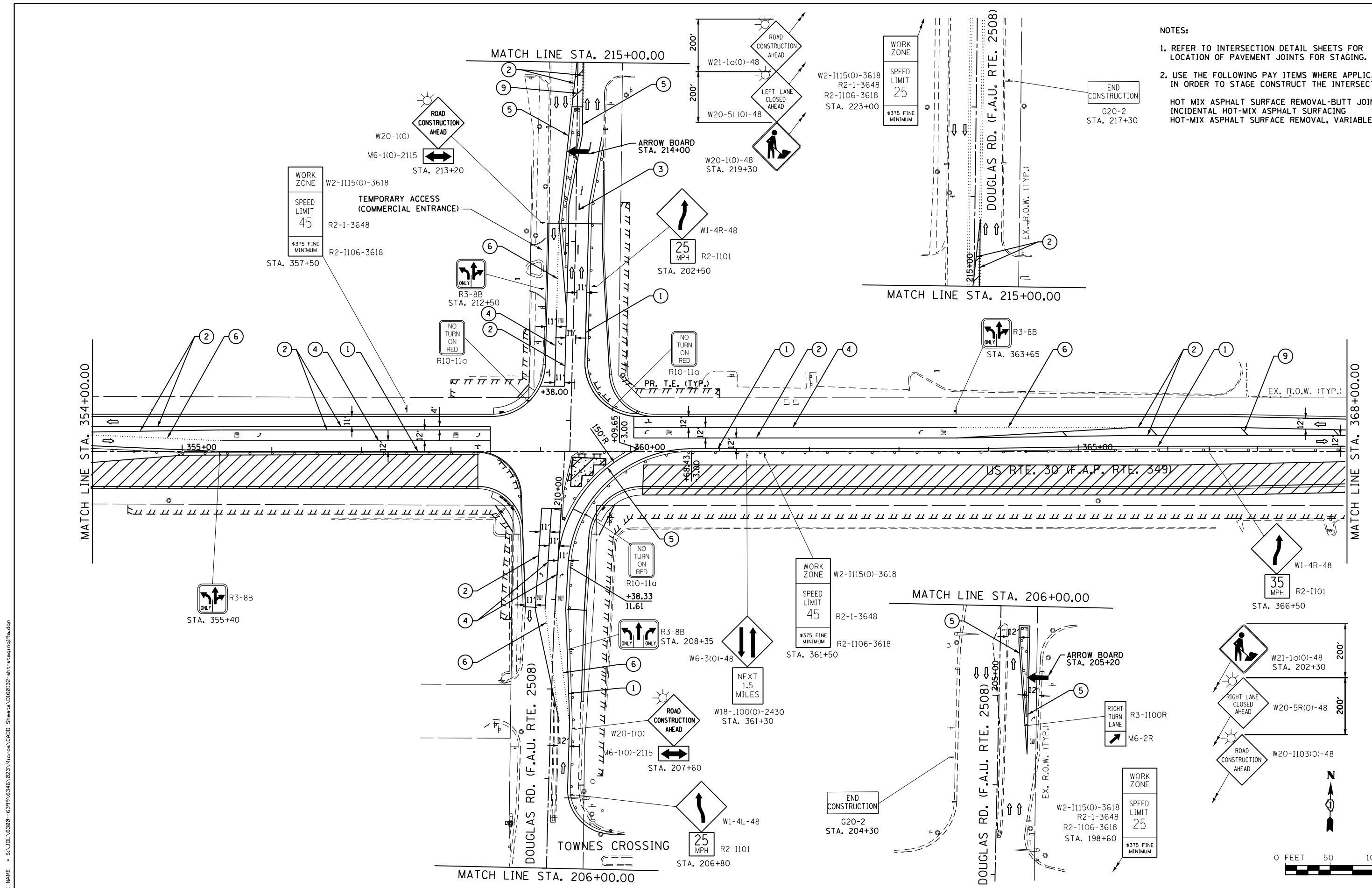


- NOTES:**
- REFER TO INTERSECTION DETAIL SHEETS FOR LOCATION OF PAVEMENT JOINTS FOR STAGING.
 - USE THE FOLLOWING PAY ITEMS WHERE APPLICABLE IN ORDER TO STAGE CONSTRUCT THE INTERSECTION:
 - HOT MIX ASPHALT SURFACE REMOVAL-BUTT JOINT
 - INCIDENTAL HOT-MIX ASPHALT SURFACING
 - HOT-MIX ASPHALT SURFACE REMOVAL, VARIABLE DEPTH



FILE NAME = S:\JUL16300-6399\6346\023\Micro\CAD Sheets\0160132-sht-staging\1a.dgn

STRAND ENGINEERS
 1170 SOUTH HOUBOLT ROAD
 JOLIET, ILLINOIS 60431
 (815) 744-4200

USER NAME = amanda.j	DESIGNED -	REVISED -
PLOT SCALE = 100.0000' / 1"	DRAWN -	REVISED -
PLOT DATE = 8/1/2012	CHECKED -	REVISED -
	DATE -	REVISED -

**STATE OF ILLINOIS
 DEPARTMENT OF TRANSPORTATION**

**MAINTENANCE OF TRAFFIC
 STAGE 2a**

SCALE: AS SHOWN	SHEET NO. OF SHEETS	STA. 354+00.00 TO STA. 368+00.00
-----------------	---------------------	----------------------------------

F.A.P. RTE. 349	SECTION 11 WRS-3	COUNTY KENDALL	TOTAL SHEETS 527	SHEET NO. 121
CONTRACT NO. 60132				
FED. ROAD DIST. NO. 1 ILLINOIS FED. AID PROJECT				