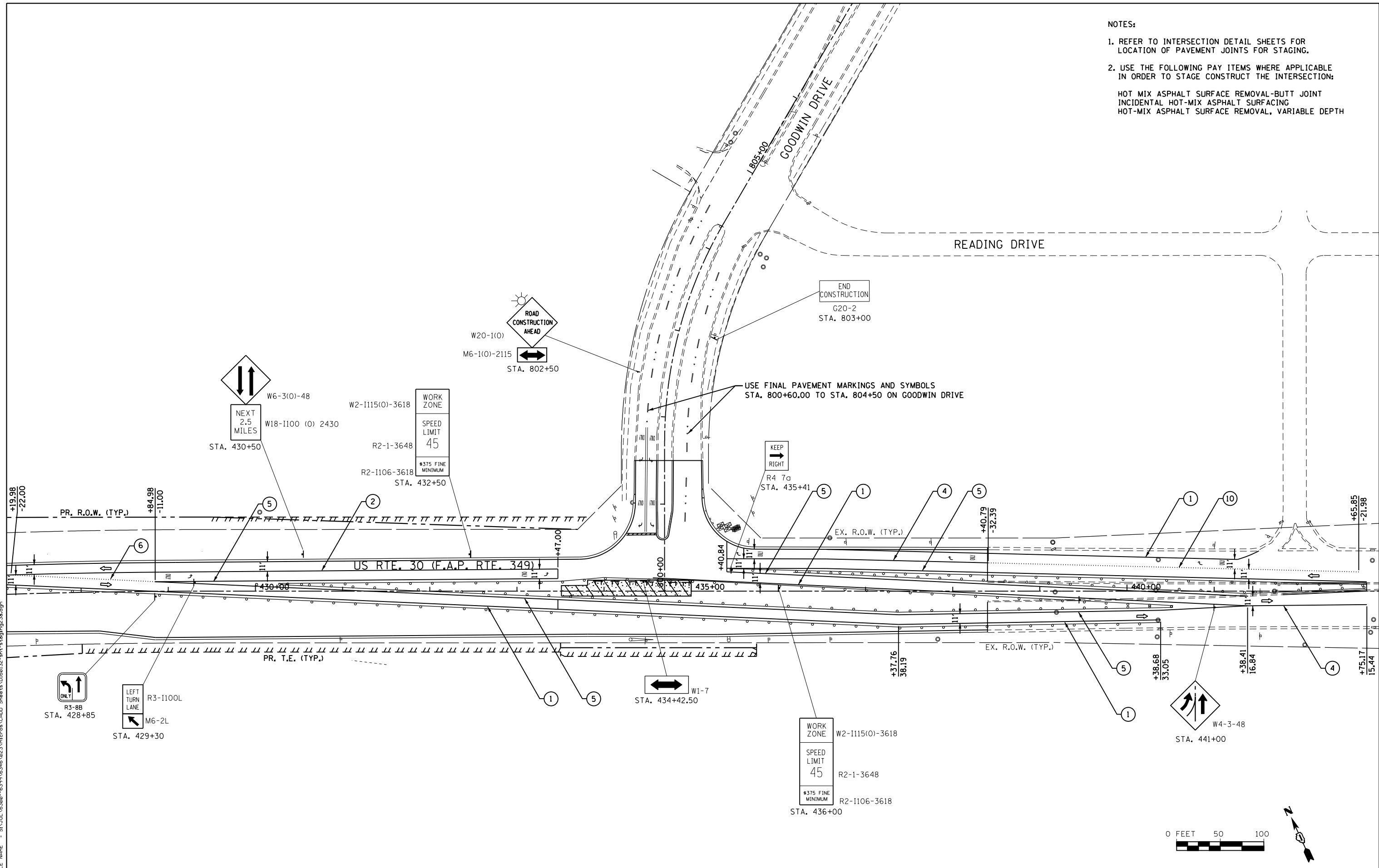


- NOTES:
- REFER TO INTERSECTION DETAIL SHEETS FOR LOCATION OF PAVEMENT JOINTS FOR STAGING.
 - USE THE FOLLOWING PAY ITEMS WHERE APPLICABLE IN ORDER TO STAGE CONSTRUCT THE INTERSECTION:
 - HOT MIX ASPHALT SURFACE REMOVAL-BUTT JOINT
 - INCIDENTAL HOT-MIX ASPHALT SURFACING
 - HOT-MIX ASPHALT SURFACE REMOVAL, VARIABLE DEPTH



FILE NAME = S:\JOL\6300-6399\6346\023\Micro\CAD\ Sheets\0160132-shr-staging23a.dgn



USER NAME = amanda.j
 PLOT SCALE = 100.0000' / in.
 PLOT DATE = 8/1/2012

DESIGNED -	REVISED -
DRAWN -	REVISED -
CHECKED -	REVISED -
DATE -	REVISED -

**STATE OF ILLINOIS
DEPARTMENT OF TRANSPORTATION**

**MAINTENANCE OF TRAFFIC
STAGE 2a**

SCALE: AS SHOWN SHEET NO. OF SHEETS STA. 430+00.00 TO STA. 439+00.00

F.A.P. RTE.	SECTION	COUNTY	TOTAL SHEETS	SHEET NO.
349	11 WRS-3	KENDALL	527	131
CONTRACT NO. 60132				
FED. ROAD DIST. NO. 1 ILLINOIS FED. AID PROJECT				