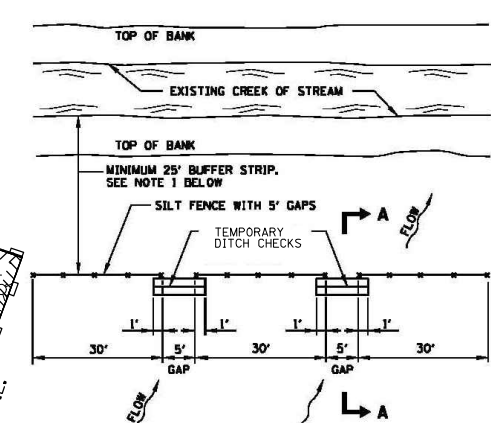
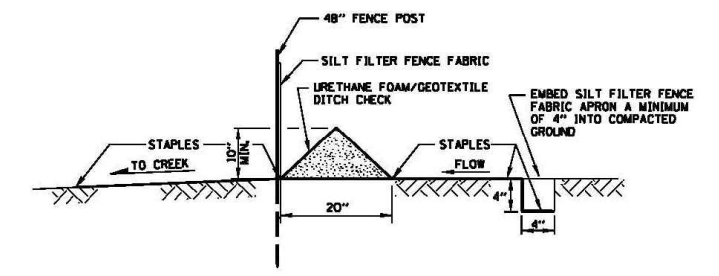


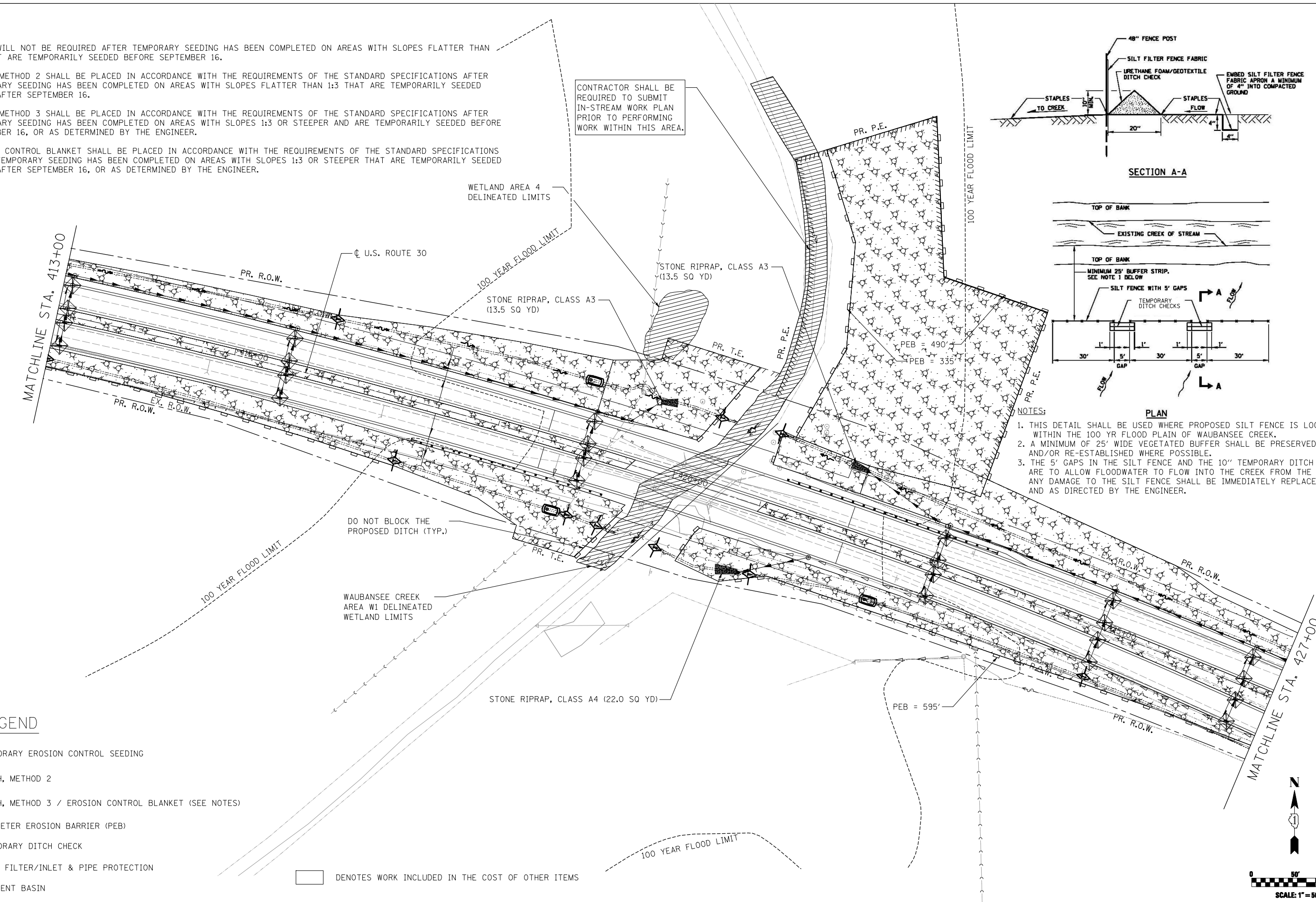
NOTES:

- MULCH WILL NOT BE REQUIRED AFTER TEMPORARY SEEDING HAS BEEN COMPLETED ON AREAS WITH SLOPES FLATTER THAN 1:3 THAT ARE TEMPORARILY SEEDED BEFORE SEPTEMBER 16.
- MULCH, METHOD 2 SHALL BE PLACED IN ACCORDANCE WITH THE REQUIREMENTS OF THE STANDARD SPECIFICATIONS AFTER TEMPORARY SEEDING HAS BEEN COMPLETED ON AREAS WITH SLOPES FLATTER THAN 1:3 THAT ARE TEMPORARILY SEEDED ON OR AFTER SEPTEMBER 16.
- MULCH, METHOD 3 SHALL BE PLACED IN ACCORDANCE WITH THE REQUIREMENTS OF THE STANDARD SPECIFICATIONS AFTER TEMPORARY SEEDING HAS BEEN COMPLETED ON AREAS WITH SLOPES 1:3 OR STEEPER AND ARE TEMPORARILY SEEDED BEFORE SEPTEMBER 16, OR AS DETERMINED BY THE ENGINEER.
- EROSION CONTROL BLANKET SHALL BE PLACED IN ACCORDANCE WITH THE REQUIREMENTS OF THE STANDARD SPECIFICATIONS AFTER TEMPORARY SEEDING HAS BEEN COMPLETED ON AREAS WITH SLOPES 1:3 OR STEEPER THAT ARE TEMPORARILY SEEDED ON OR AFTER SEPTEMBER 16, OR AS DETERMINED BY THE ENGINEER.

CONTRACTOR SHALL BE REQUIRED TO SUBMIT IN-STREAM WORK PLAN PRIOR TO PERFORMING WORK WITHIN THIS AREA.



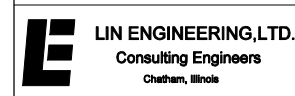
- NOTES:
- THIS DETAIL SHALL BE USED WHERE PROPOSED SILT FENCE IS LOCATED WITHIN THE 100 YR FLOOD PLAIN OF WAUBANSEE CREEK.
  - A MINIMUM OF 25' WIDE VEGETATED BUFFER STRIP SHALL BE PRESERVED AND/OR RE-ESTABLISHED WHERE POSSIBLE.
  - THE 5' GAPS IN THE SILT FENCE AND THE 10" TEMPORARY DITCH CHECKS ARE TO ALLOW FLOODWATER TO FLOW INTO THE CREEK FROM THE SITE. ANY DAMAGE TO THE SILT FENCE SHALL BE IMMEDIATELY REPLACED AND AS DIRECTED BY THE ENGINEER.



LEGEND

- TEMPORARY EROSION CONTROL SEEDING
- MULCH, METHOD 2
- MULCH, METHOD 3 / EROSION CONTROL BLANKET (SEE NOTES)
- PERIMETER EROSION BARRIER (PEB)
- TEMPORARY DITCH CHECK
- INLET FILTER/INLET & PIPE PROTECTION
- SEDIMENT BASIN

DENOTES WORK INCLUDED IN THE COST OF OTHER ITEMS



USER NAME = Plotted by Roadways8	DESIGNED - RWK	REVISED -
	DRAWN - RWK	REVISED -
PLOT SCALE = 100.0000' / IN.	CHECKED - ST	REVISED -
PLOT DATE = 4/26/2012	DATE - 04/2012	REVISED -

STATE OF ILLINOIS  
DEPARTMENT OF TRANSPORTATION

TEMPORARY EROSION CONTROL PLAN  
U.S. ROUTE 30 - BRIARCLIFF RD. TO U.S. ROUTE 34  
SCALE: 1"=50' SHEET NO. 9 OF 10 SHEETS STA. 413+00.00 TO STA. 427+00.00

F.A.P. RTE. 349	SECTION 11 WRS-3	COUNTY KENDALL	TOTAL SHEETS 527	SHEET NO. 150
CONTRACT NO. 60132				
FED. ROAD DIST. NO. 1 ILLINOIS FED. AID PROJECT				