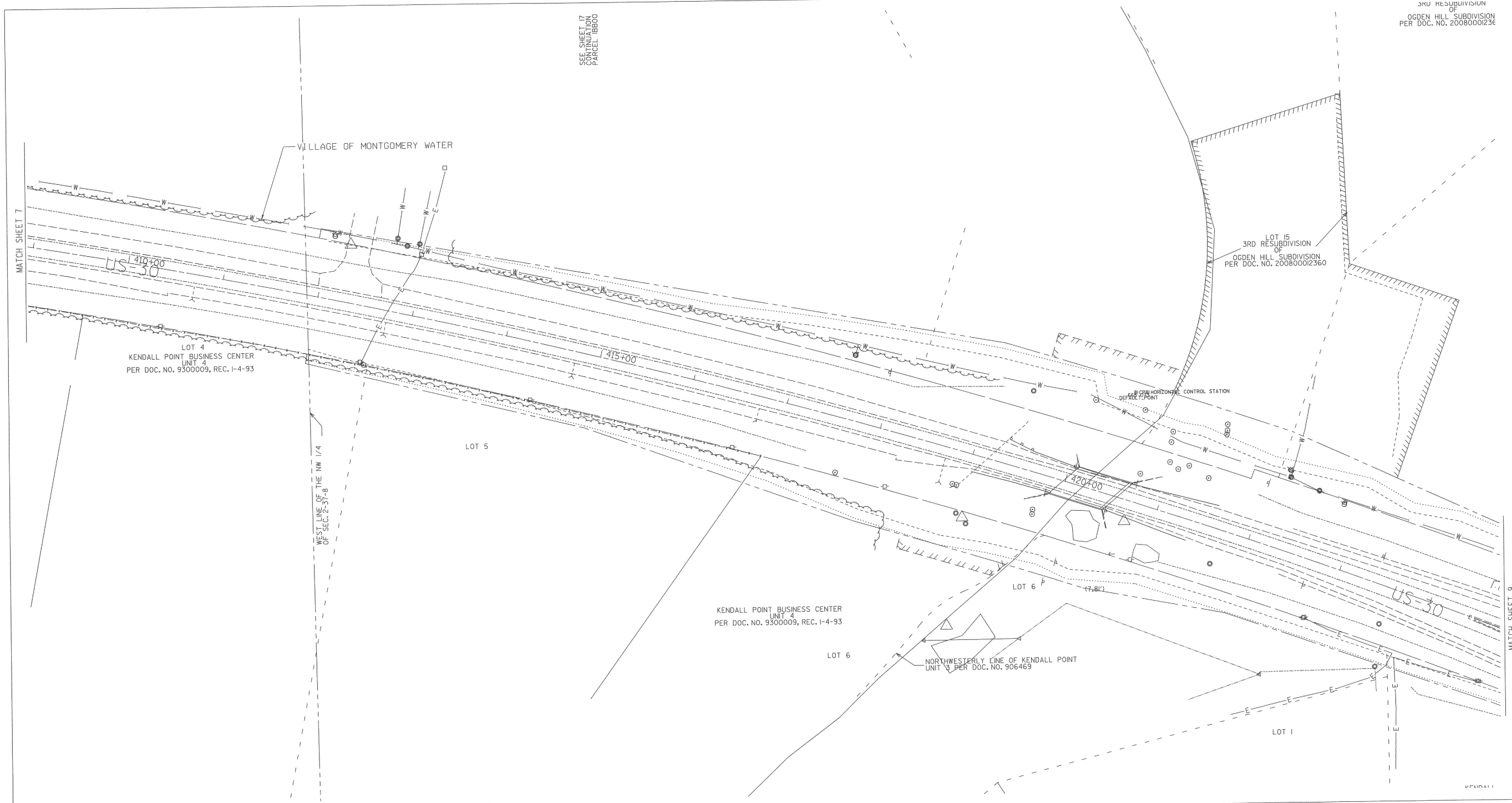


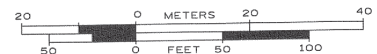
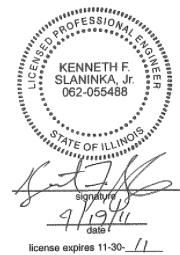
SEE SHEET 17 CONTINUATION PARCEL 18800



- A — A — AERIAL UTILITY
- - - - - UNKNOWN
- CTV — CTV — CABLE TV
- T — T — TELEPHONE
- G — G — GAS
- E — E — ELECTRIC
- W — W — WATER
- FO — FO — FIBER OPTIC
- S — S — SEWER
- T — T — TBE TEST HOLE

Utilities shown on these plans as depicted in the legend have been investigated by Cardno TBE in accordance with SUE Industry Standards. All other information shown has been provided to Cardno TBE by others. TBE's SUE field investigation was performed 3/01/11 through 4/08/11. Changes to utilities after 4/08/11 may have been made and therefore may result in variances from this plan. Consideration should be given to updating this plan if deemed advisable prior to final design and construction.

ALL UTILITIES SHOWN QUALITY LEVEL "B" UNLESS NOTED OTHERWISE.



TBE Job No. IL09510432  
SUE Plan Page: 8 of 13

Utility Quality Level "A": Test Hole  
Utility Quality Level "B": Designating  
Utility Quality Level "C": Research with Survey  
Utility Quality Level "D": Records Research

DESIGNED	LP	REVISED	
DRAWN	KLC	REVISED	
CHECKED	KFS	REVISED	
DATE	4/13/11	REVISED	

STATE OF ILLINOIS  
DEPARTMENT OF TRANSPORTATION

US RT. 30 at Briarcliff Road to US RT. 34  
Montgomery, IL

F.A. RTE.	SECTION	COUNTY	TOTAL SHEETS	SHEET NO.
	11WR5-3	Kane/Kendall		
Contract No. 60132				
FED. ROAD DIST. NO. [ILLINOIS] IDOT Project No.				