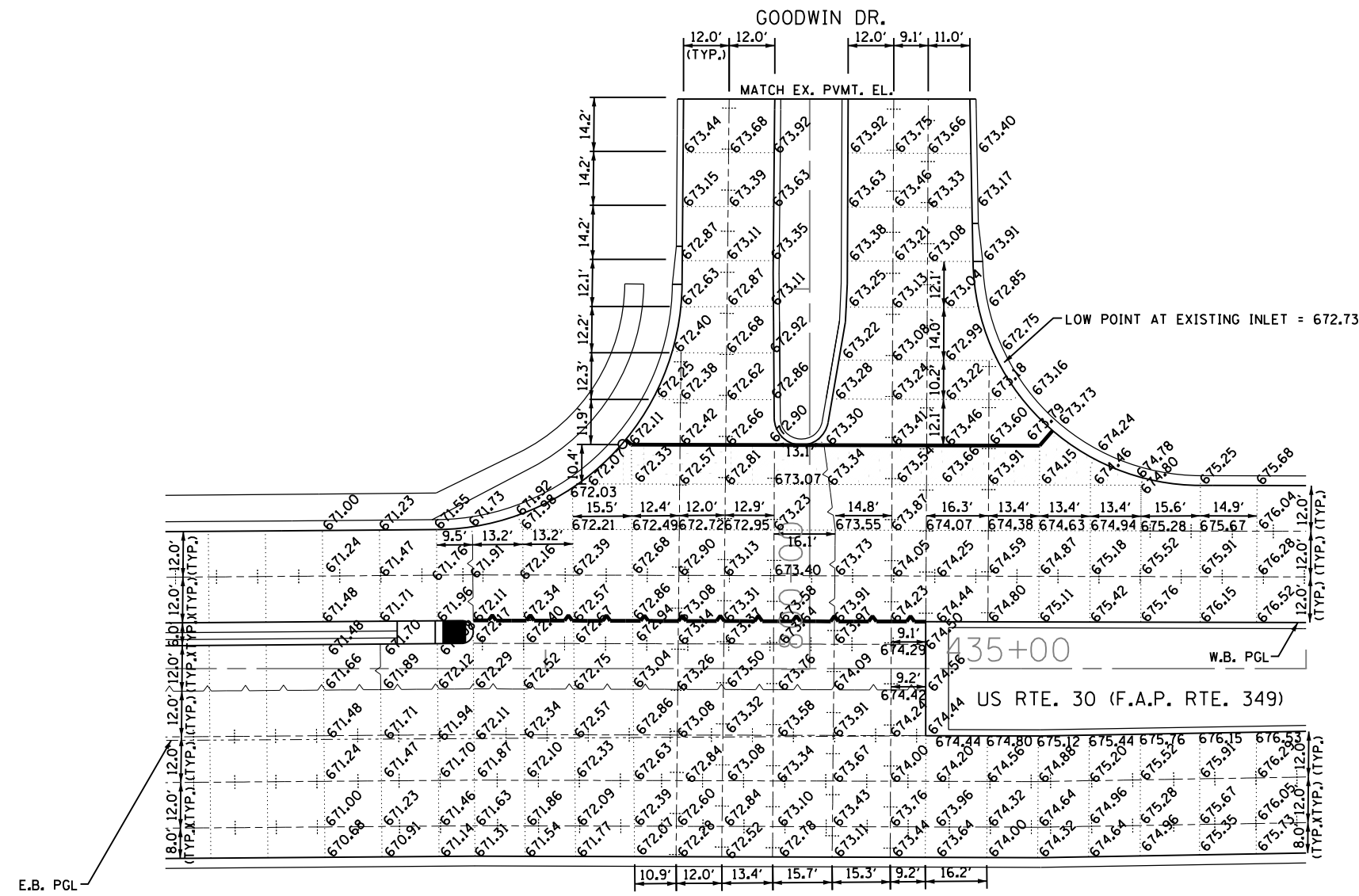
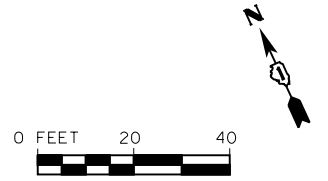


- LEGEND:**
- LONGITUDINAL OR TRANSVERSE CONSTRUCTION JOINT
 - SAWED LONGITUDINAL JOINT
 - TRANSVERSE SAWED CONTRACTION JOINT
 - LONGITUDINAL CONSTRUCTION JOINT WITH DOWEL BARS IN LIEU OF TIE BARS
 - USE DOWEL BARS ON ALL 4 SIDES FOR PANELS PER DETAIL OF PAVEMENT SEPARATION JOINT FOR JOINTED PCC PAVEMENTS AT INTERSECTIONS (BD 52)
 - SLEEPER SLAB (PAVEMENT SEPARATION JOINT)
 - SAWED LONGITUDINAL JOINT WITH DOWEL BARS



- NOTES:**
1. ALL TRANSVERSE JOINTS SPACED 15-FT UNLESS OTHERWISE NOTED.
 2. ELEVATIONS SHOWN AT CURB AND GUTTER LOCATIONS ARE EDGE OF PAVEMENT ELEVATIONS.



FILE NAME = S:\JOL\63300-6399\6346\023\Microsta\Sh\A\160132-sh\INT03.dgn

STRAND
ASSOCIATES, INC.
ENGINEERS

1170 SOUTH HOUBOLT ROAD JOLIET, ILLINOIS 60431 (815) 744-4200	USER NAME = dennisw	DESIGNED - MAG	REVISED -
		DRAWN - BJJ	REVISED -
	PLOT SCALE = 40.0000' / in.	CHECKED - SJN	REVISED -
	PLOT DATE = 5/1/2012	DATE -	REVISED -

**STATE OF ILLINOIS
DEPARTMENT OF TRANSPORTATION**

GOODWIN DR. INTERSECTION DETAIL SHEETS			
SCALE: AS SHOWN	SHEET NO.	OF SHEETS	STA. TO STA.

F.A.P. RTE.	SECTION	COUNTY	TOTAL SHEETS	SHEET NO.
349	11 WRS-3	KENDALL	527	221
CONTRACT NO. 60132				
FED. ROAD DIST. NO. 1 ILLINOIS FED. AID PROJECT				