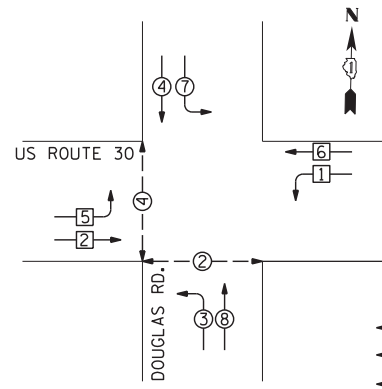


CONTROLLER SEQUENCE

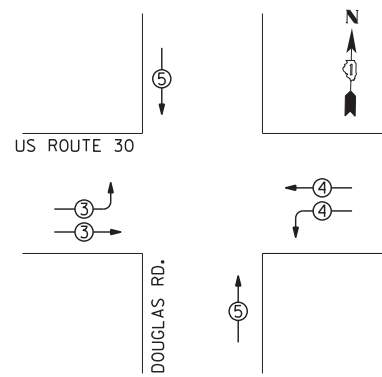


LEGEND

- DUAL ENTRY PHASE
- SINGLE ENTRY PHASE
- PEDESTRIAN PHASE
- NUMBER REFERS TO ASSOCIATED PHASE

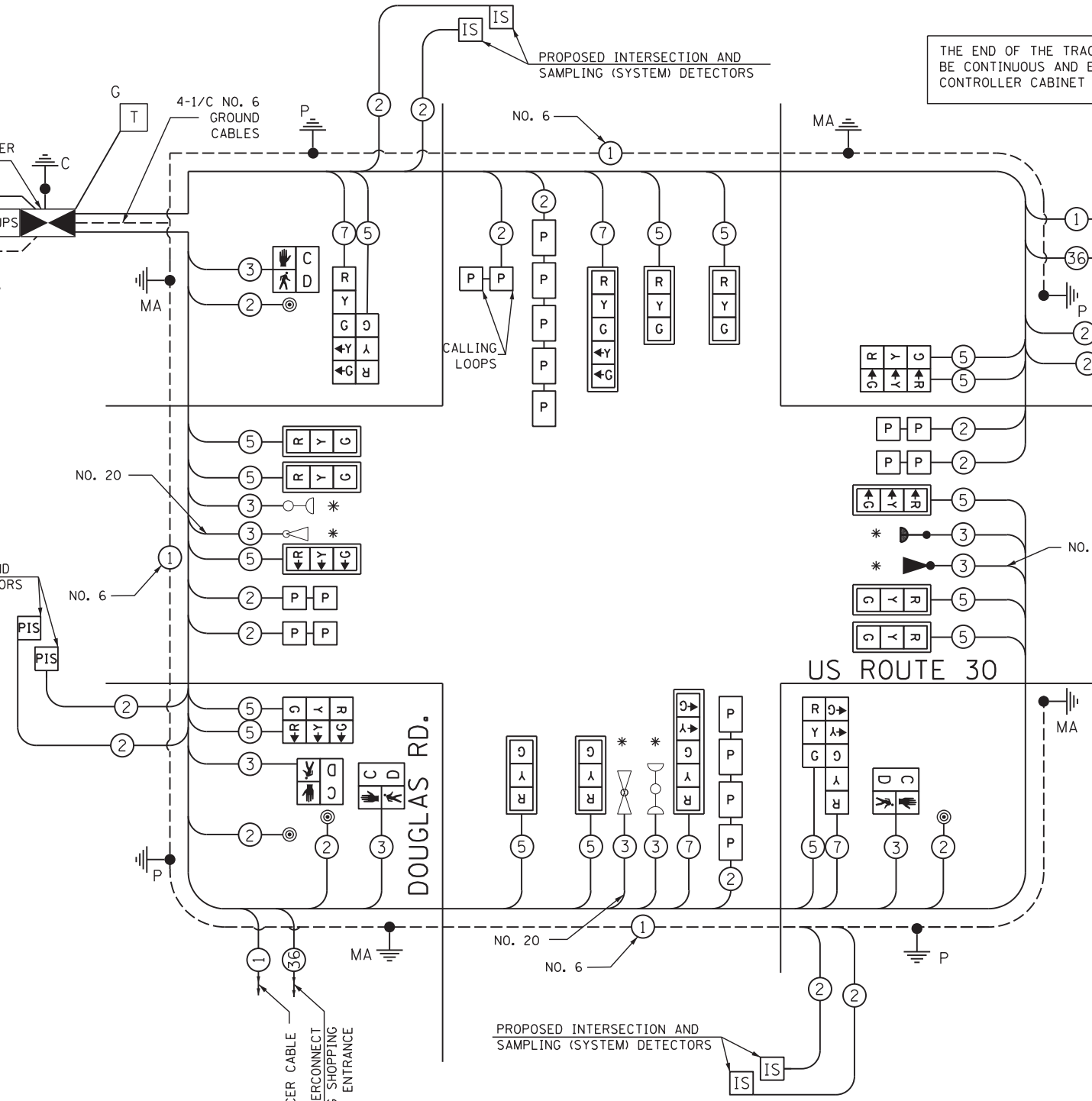
PHASE DESIGNATION DIAGRAM

EMERGENCY VEHICLE PREEMPTION SEQUENCE



PROPOSED EMERGENCY VEHICLE PREEMPTORS			
EMERGENCY VEHICLE PREEMPTOR	3	4	5
MOVEMENT	↘	↙	↕

PROPOSED INTERSECTION AND SAMPLING (SYSTEM) DETECTORS



CABLE PLAN

SCHEDULE OF QUANTITIES

ITEM	UNIT	QUANTITY
SIGN PANEL - TYPE 1	SQ FT	53
SERVICE INSTALLATION - POLE MOUNTED	EACH	1
UNDERGROUND CONDUIT, GALVANIZED STEEL, 2" DIA.	FOOT	1493
UNDERGROUND CONDUIT, GALVANIZED STEEL, 2 1/2" DIA.	FOOT	103
UNDERGROUND CONDUIT, GALVANIZED STEEL, 3" DIA.	FOOT	74
UNDERGROUND CONDUIT, GALVANIZED STEEL, 4" DIA.	FOOT	528
HANDHOLE	EACH	7
HEAVY-DUTY HANDHOLE	EACH	4
DOUBLE HANDHOLE	EACH	2
FULL-ACTUATED CONTROLLER AND TYPE V CABINET, SPECIAL	EACH	1
UNINTERRUPTABLE POWER SUPPLY, SPECIAL	EACH	1
TRANSCEIVER-FIBER OPTIC	EACH	1
ELECTRIC CABLE IN CONDUIT, SIGNAL NO. 14 2C	FOOT	697
ELECTRIC CABLE IN CONDUIT, SIGNAL NO. 14 3C	FOOT	1414
ELECTRIC CABLE IN CONDUIT, SIGNAL NO. 14 5C	FOOT	3500
ELECTRIC CABLE IN CONDUIT, SIGNAL NO. 14 7C	FOOT	950
ELECTRIC CABLE IN CONDUIT, LEAD-IN, NO. 14 1 PAIR	FOOT	4700
ELECTRIC CABLE IN CONDUIT, SERVICE, NO. 6 2C	FOOT	120
ELECTRIC CABLE IN CONDUIT, GROUNDING, NO. 6 1C	FOOT	1000
TRAFFIC SIGNAL POST, GALVANIZED STEEL 14 FT.	EACH	2
TRAFFIC SIGNAL POST, GALVANIZED STEEL 16 FT.	EACH	2
STEEL MAST ARM ASSEMBLY AND POLE, 38 FT.	EACH	2
STEEL MAST ARM ASSEMBLY AND POLE, 52 FT.	EACH	1
STEEL MAST ARM ASSEMBLY AND POLE, 56 FT.	EACH	1
CONCRETE FOUNDATION, TYPE A	FOOT	16
CONCRETE FOUNDATION, TYPE C	FOOT	4
CONCRETE FOUNDATION, TYPE E 36-INCH DIAMETER	FOOT	37
CONCRETE FOUNDATION, TYPE E 42-INCH DIAMETER	FOOT	21
SIGNAL HEAD, L.E.D., 1-FACE, 3-SECTION, MAST ARM MOUNTED	EACH	10
SIGNAL HEAD, L.E.D., 1-FACE, 5-SECTION, MAST ARM MOUNTED	EACH	2
SIGNAL HEAD, L.E.D., 2-FACE, 3-SECTION, BRACKET MOUNTED	EACH	2
SIGNAL HEAD, L.E.D., 2-FACE, 1-3 SECTION, 1-5 SECTION, BRACKET MOUNTED	EACH	2
PEDESTRIAN SIGNAL HEAD, L.E.D., 1-FACE, BRACKET MOUNTED WITH COUNTDOWN TIMER	EACH	4
TRAFFIC SIGNAL BACKPLATE, LOUVERED, ALUMINUM	EACH	12
INDUCTIVE LOOP DETECTOR	EACH	15
DETECTOR LOOP, TYPE I	FOOT	144
PREFORMED DETECTOR LOOP	FOOT	891
* LIGHT DETECTOR	EACH	1
PEDESTRIAN PUSH-BUTTON	EACH	4
TEMPORARY TRAFFIC SIGNAL INSTALLATION	EACH	1
* RELOCATE EXISTING EMERGENCY VEHICLE PRIORITY SYSTEM, DETECTOR UNIT	EACH	2
* RELOCATE EXISTING EMERGENCY VEHICLE PRIORITY SYSTEM, PHASING UNIT	EACH	1
REMOVE EXISTING TRAFFIC SIGNAL EQUIPMENT	EACH	1
REMOVE EXISTING HANDHOLE	EACH	13
REMOVE EXISTING CONCRETE FOUNDATION	EACH	9
TEMPORARY TRAFFIC SIGNAL TIMING	EACH	1
* ELECTRIC CABLE IN CONDUIT NO. 20 3/C, TWISTED, SHIELDED	FOOT	689

I.D.O.T. TRAFFIC SIGNAL INSTALLATION ELECTRICAL SERVICE REQUIREMENTS					
TYPE	NO LAMPS	WATTAGE		% OPERATION	TOTAL WATTAGE
		INCAND.	LED		
SIGNAL (RED)	20		17	0.50	170.0
(YELLOW)	20		25	0.25	125.0
(GREEN)	20		15	0.25	75.0
ARROW	8		12	0.10	9.6
PED. SIGNAL	4		25	1.00	100
ILLUM. SIGN	-		25	0.10	-
CONTROLLER	2		100	1.00	200
TOTAL =					679.6

ENERGY COST TO:

VILLAGE OF MONTGOMERY
1300 S. BROADWAY
MONTGOMERY, ILLINOIS 60538

ENERGY SUPPLY CONTACT: MARK SHERIBEL
PHONE: 630-723-2128
COMPANY: COMMONWEALTH EDISON

THE END OF THE TRACER CABLE SHALL BE CONTINUOUS AND EXTEND INTO THE CONTROLLER CABINET

THE TRAFFIC SIGNAL CONTROL EQUIPMENT FOR THIS PROJECT SHALL BE "EAGLE" TO MATCH THE EXISTING ADJACENT SYSTEM.

* 100% OF THE COST TO THE VILLAGE OF OSWEGO

\\Dc010\Projects\264\Drawings\CADD_Sheets\160132-SHT-TS-TI.dgn

SINGH
CONSULTING ENGINEERS
www.singhinc.com

USER NAME = vpelegrinos
DESIGNED - VO
DRAWN - YJ
PLOT SCALE = 20,000' / in.
CHECKED - KGP
PLOT DATE = 4/25/2012

REVISOR -
REVISION -
REVISOR -
REVISION -
DATE -

**STATE OF ILLINOIS
DEPARTMENT OF TRANSPORTATION**

**SCHEDULE OF QUANTITIES, CABLE PLAN, PHASE DESIGNATION DIAGRAM
AND EMERGENCY PREEMPTION SEQUENCE
US ROUTE 30 AT DOUGLAS RD.**

SCALE: N.T.S. SHEET NO. OF SHEETS STA. TO STA.

F.A.P. RTE.	SECTION	COUNTY	TOTAL SHEETS	SHEET NO.
349	11 WRS-3	KENDALL	527	261
CONTRACT NO. 60132				

FED. ROAD DIST. NO. 1 ILLINOIS FED. AID PROJECT