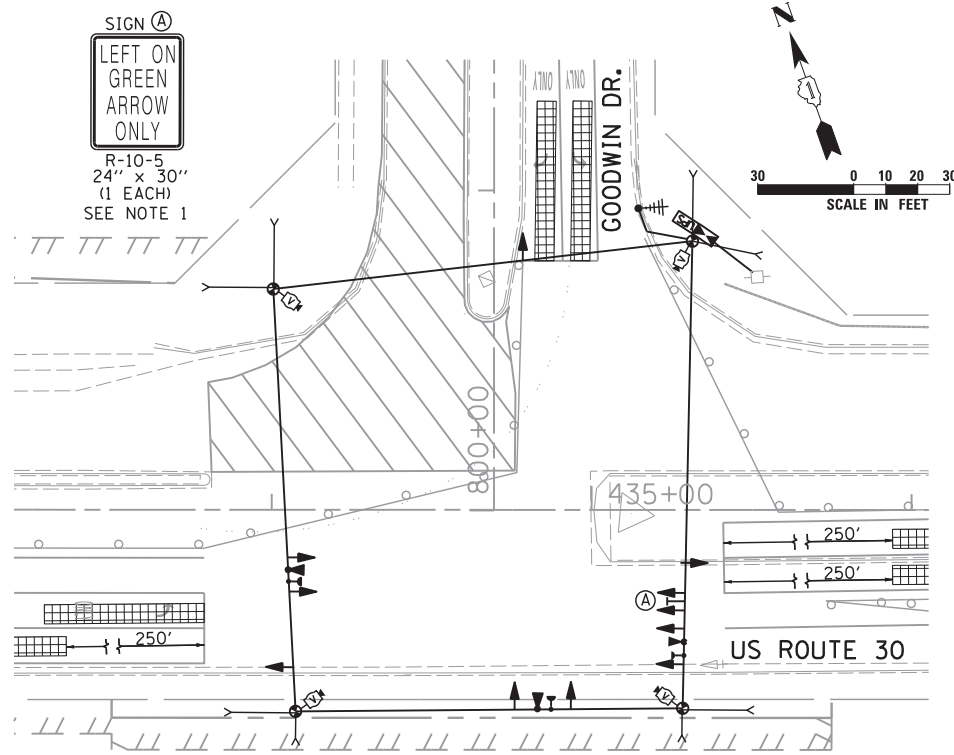


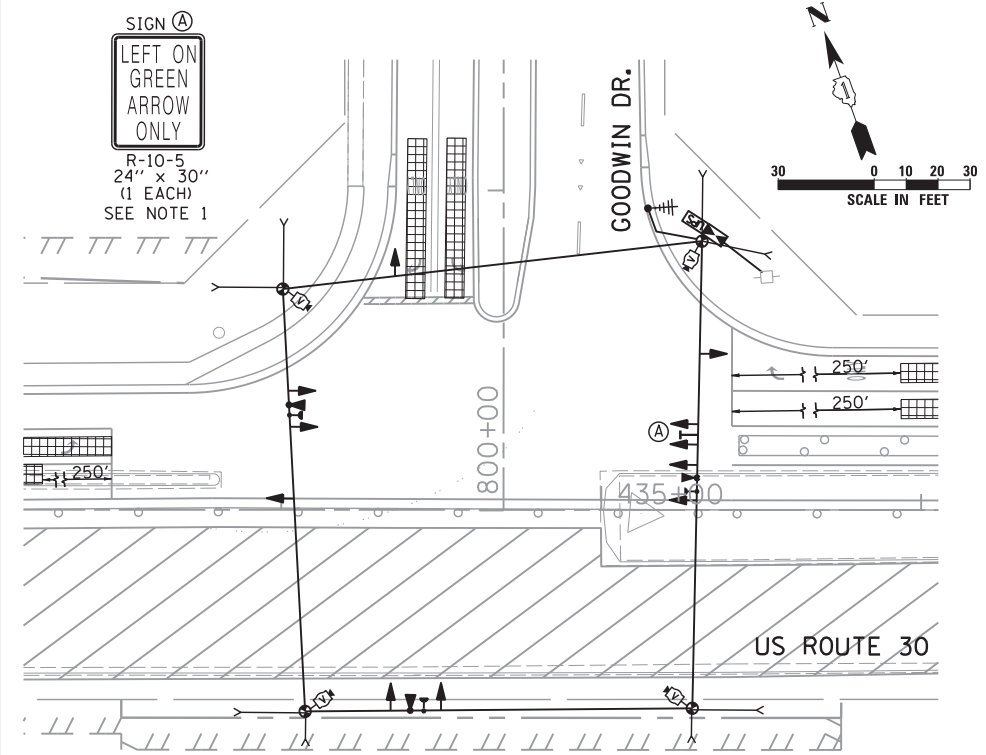
STAGE 1

NOTES:
1. COST OF SIGN IS INCIDENTAL TO TEMPORARY TRAFFIC SIGNAL INSTALLATION.



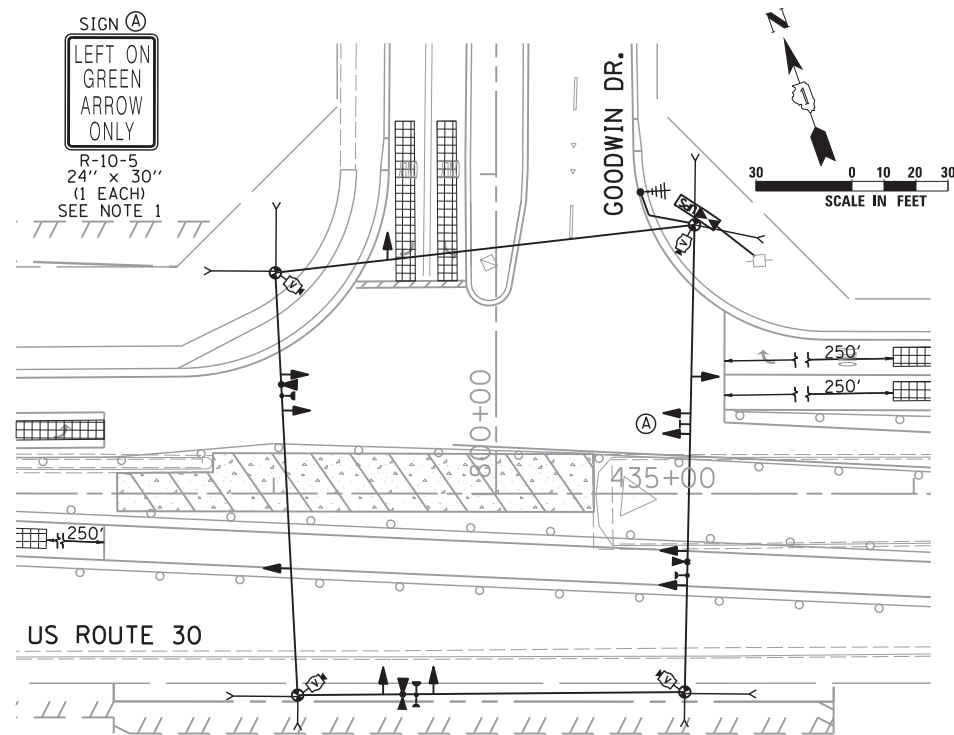
STAGE 1a

NOTES:
1. COST OF SIGN IS INCIDENTAL TO TEMPORARY TRAFFIC SIGNAL INSTALLATION.



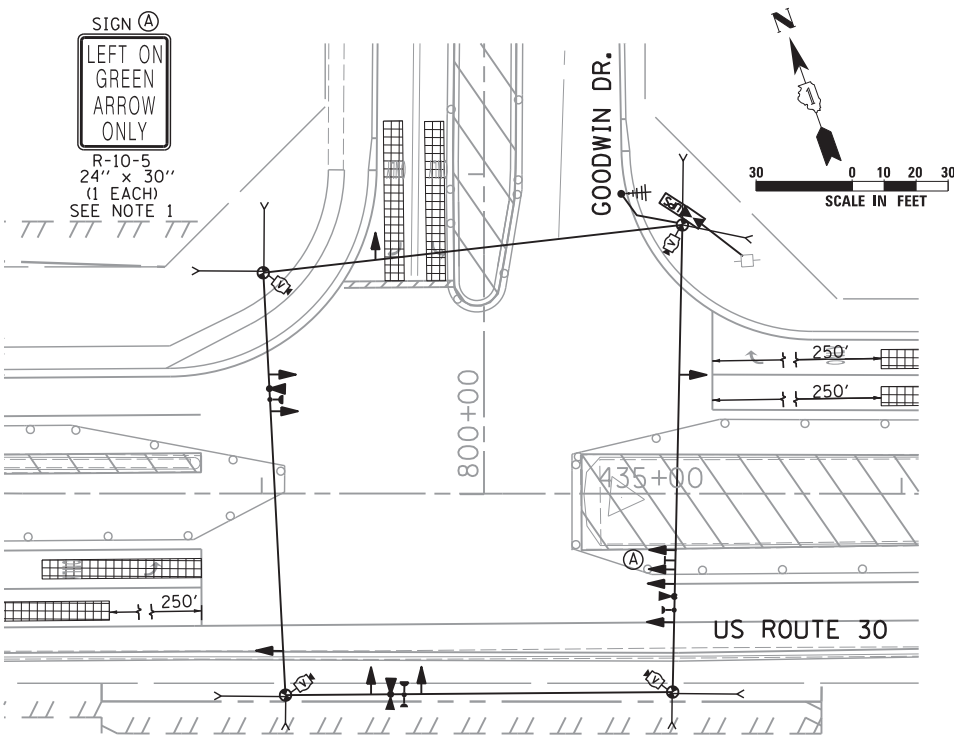
STAGE 2

NOTES:
1. COST OF SIGN IS INCIDENTAL TO TEMPORARY TRAFFIC SIGNAL INSTALLATION.



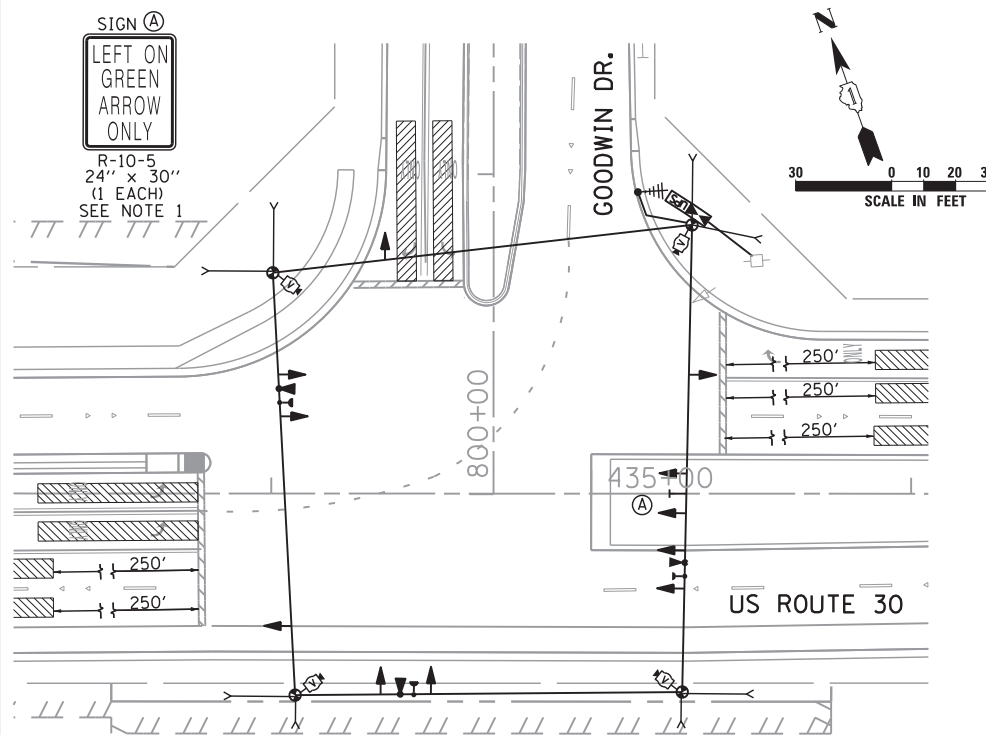
STAGE 2a

NOTES:
1. COST OF SIGN IS INCIDENTAL TO TEMPORARY TRAFFIC SIGNAL INSTALLATION.



STAGE 3

NOTES:
1. COST OF SIGN IS INCIDENTAL TO TEMPORARY TRAFFIC SIGNAL INSTALLATION.



FINAL GEOMETRICS

NOTES:
1. COST OF SIGN IS INCIDENTAL TO TEMPORARY TRAFFIC SIGNAL INSTALLATION.

\\D:\Projects\264\Dgn\CADD_Sheets\160132-SHT-TS-28.dgn

SINGH
CONSULTING ENGINEERS
www.singhinc.com

USER NAME = vpelegrinos
DESIGNED - VO
DRAWN - YJ
PLOT SCALE = 30.000' / in.
CHECKED - KGP
DATE = 4/25/2012

REVISOR -
REVISION -
REVISION -
REVISION -
REVISION -

STATE OF ILLINOIS
DEPARTMENT OF TRANSPORTATION

TEMPORARY TRAFFIC SIGNAL M.O.T. STAGING PLAN
US RTE 30 AT GOODWIN DR. STAGE 1, 1a, 2, 2a, 3 AND FINAL GEOMETRICS
SCALE: 1"=30' SHEET NO. OF SHEETS STA. TO STA.

F.A.P. RTE. 349	SECTION 11 WRS-3	COUNTY KENDALL	TOTAL SHEETS 527	SHEET NO. 272
FED. ROAD DIST. NO. 1 ILLINOIS FED. AID PROJECT			CONTRACT NO. 60132	