

**\* FIELD CUTTING DIAGRAM**  
 Order a(E) and a1(E) full length. Cut as shown and use remainder of bars in opposite corners.

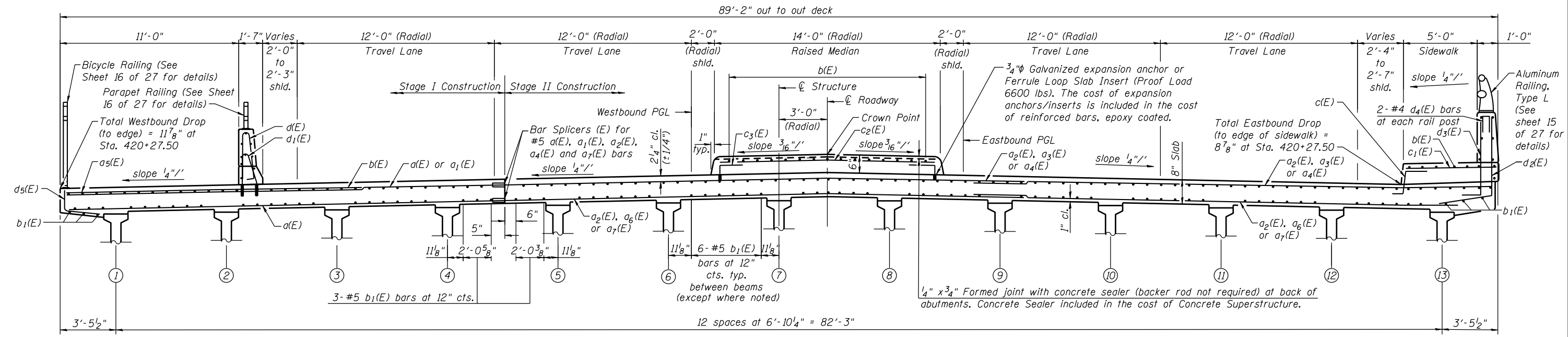
**\*\* FIELD CUTTING DIAGRAM**  
 Order a3(E) and a6(E) full length. Cut as shown and use remainder of bars in opposite corners.

**\*\*\* FIELD CUTTING DIAGRAM**  
 Order a4(E) and a7(E) full length. Cut as shown and use remainder of bars in opposite corners.

**Notes:**  
 Bars indicated thus 20 x 3-#5 etc. indicates 20 lines of bars with 3 lengths per line.  
 Not all rail posts shown for clarity.  
 See Sheet 10 of 27 for Superstructure Bill of Material.  
 See sheet 12 of 27 for Section A-A.  
 See Sheet 10 of 27 for interior parapet reinforcement.  
 See Sheet 11 of 27 for sidewalk parapet reinforcement.  
 See Cross Section for Median reinforcement.

**MINIMUM BAR LAP**  
 #5 Bar = 3'-3"

**PLAN**



**CROSS SECTION**  
 (Looking East)

FILE NAME = s:\p1\6380--6395\6346\023\micro\sh\str\_plans\047\0301-60132-005-SUP.dgn

PII-1-L

7-1-10

1170 SOUTH HOUBOLT ROAD  
 JOLIET, ILLINOIS 60431  
 (815) 744-4200  
 IDFPR NO. 184-001273

USER NAME = brianf  
 PLOT SCALE =  
 PLOT DATE = 5/1/2012

DESIGNED *KDH*  
 CHECKED *AJS*  
 DRAWN *BJF*  
 CHECKED *KDH*

REVISED -  
 REVISED -  
 REVISED -  
 REVISED -

**STATE OF ILLINOIS**  
**DEPARTMENT OF TRANSPORTATION**

**SUPERSTRUCTURE**  
**STRUCTURE NO. 047-0301**

SHEET NO. 9 OF 27 SHEETS

F.A.P. RTE.	SECTION	COUNTY	TOTAL SHEETS	SHEET NO.
349	11 WRS-3	KENDALL	527	297
CONTRACT NO. 60132				
ILLINOIS FED. AID PROJECT				