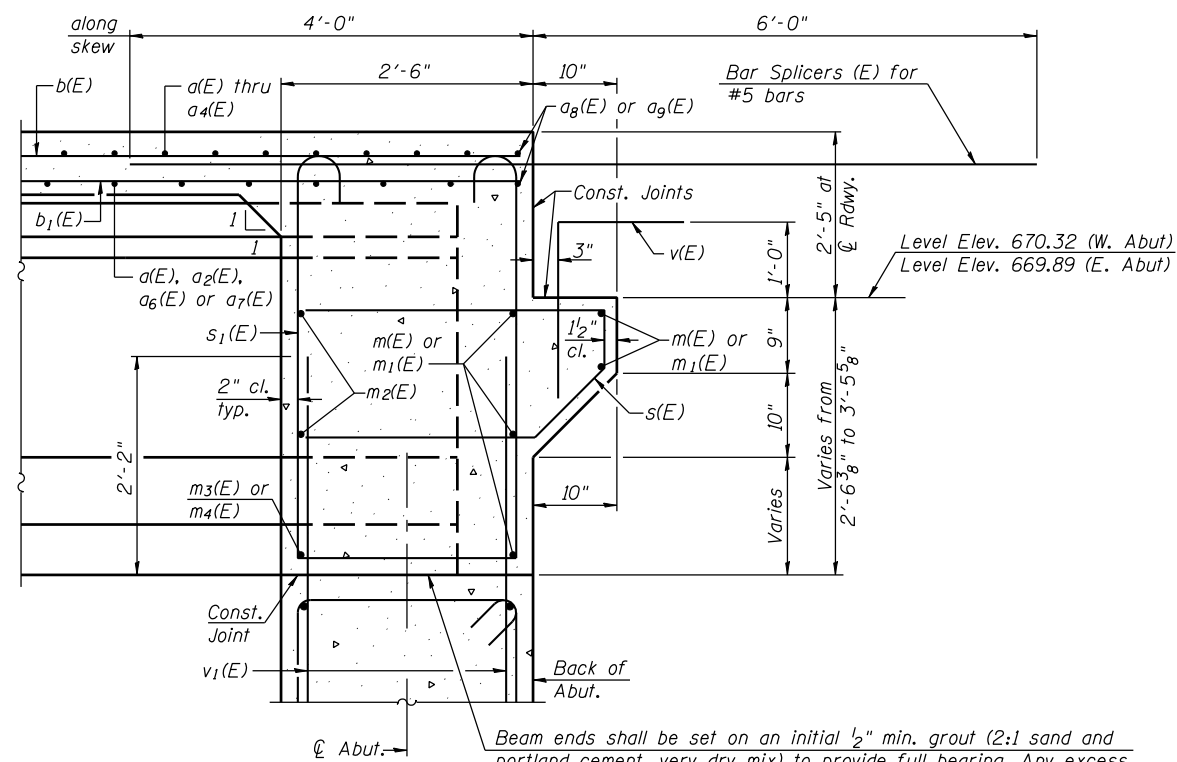


**DIAPHRAGM ELEVATION AT ABUTMENT**  
(Looking East)



**MIN. BAR LAP**  
#6 bar = 3'-4"

**Notes:**  
 Reinforcement bars in diaphragm are billed with superstructure on sheet 10 of 27.  
 Concrete in diaphragm is included with Concrete Superstructure on sheet 10 of 27.  
 For details of bars s(E) and s<sub>1</sub>(E) see sheet 10 of 27.  
 The s(E) and s<sub>1</sub>(E) bars shall be placed parallel to the beams.  
 Spacing for these bars shall be at right angles to the beams.  
 Contractor to cut m<sub>2</sub>(E) and m<sub>3</sub>(E) bars at Stage Construction Line.  
 Remaining portion of bar to be saved and spliced in Stage II Construction.

Beam ends shall be set on an initial 1/2" min. grout (2:1 sand and portland cement, very dry mix) to provide full bearing. Any excess grout squeezed out from under the beam shall be removed. Cost included with Concrete Structures.

**SECTION A-A**

Dimensions at right angles to abutment, except as shown.

FILE NAME = s:\p1\6380--6395\6346\023\micro\sh\str.plans\0470301-60132-007-DIAPDET.dgn

**STRAND ASSOCIATES, INC.**  
 ENGINEERS  
 1170 SOUTH HOUBOLT ROAD  
 JOLIET, ILLINOIS 60431  
 (815) 744-4200  
 IDFPR NO. 184-001273

USER NAME = brianf	DESIGNED <i>KDH</i>	REVISED -
	CHECKED <i>AJS</i>	REVISED -
PLOT SCALE =	DRAWN <i>BJF</i>	REVISED -
PLOT DATE = 5/1/2012	CHECKED <i>KDH</i>	REVISED -

**STATE OF ILLINOIS  
DEPARTMENT OF TRANSPORTATION**

**DIAPHRAGM DETAILS  
STRUCTURE NO. 047-0301**

SHEET NO. 12 OF 27 SHEETS

F.A.P. RTE.	SECTION	COUNTY	TOTAL SHEETS	SHEET NO.
349	11 WRS-3	KENDALL	527	300
CONTRACT NO. 60132				
ILLINOIS FED. AID PROJECT				