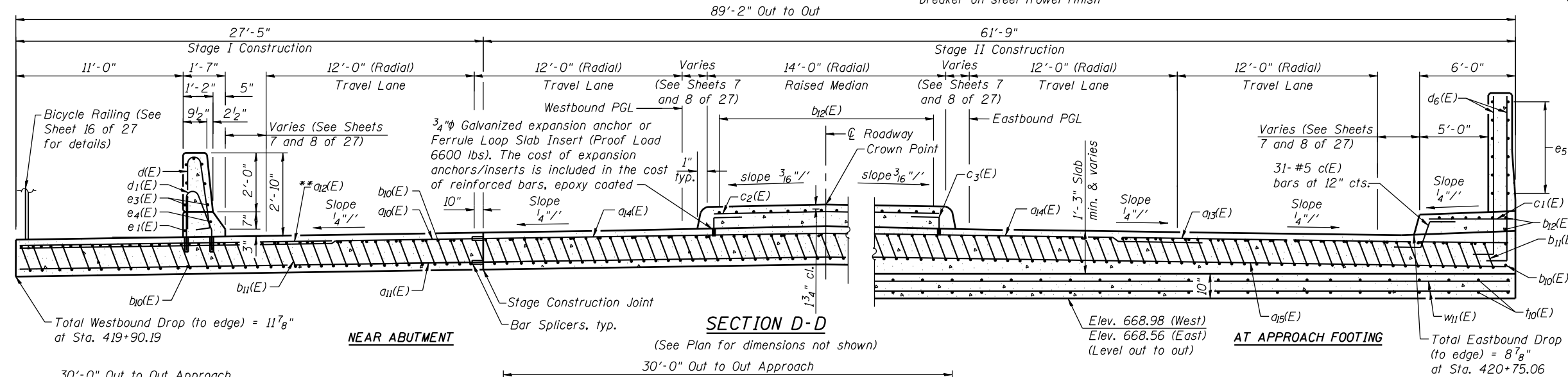
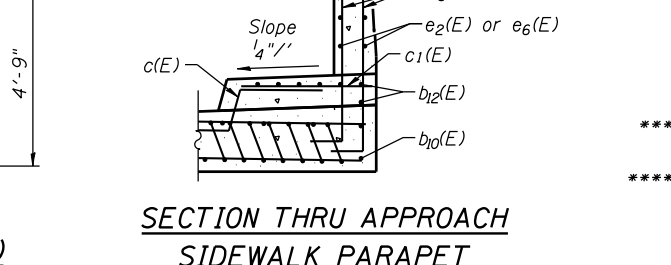
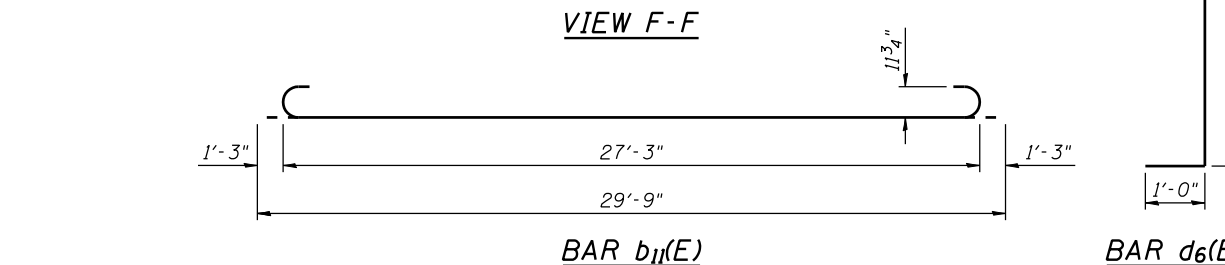
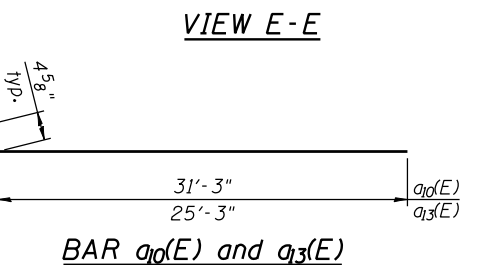
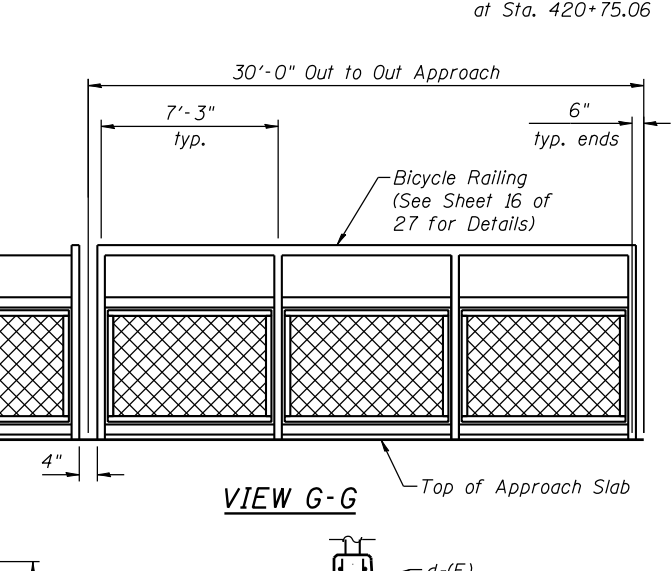
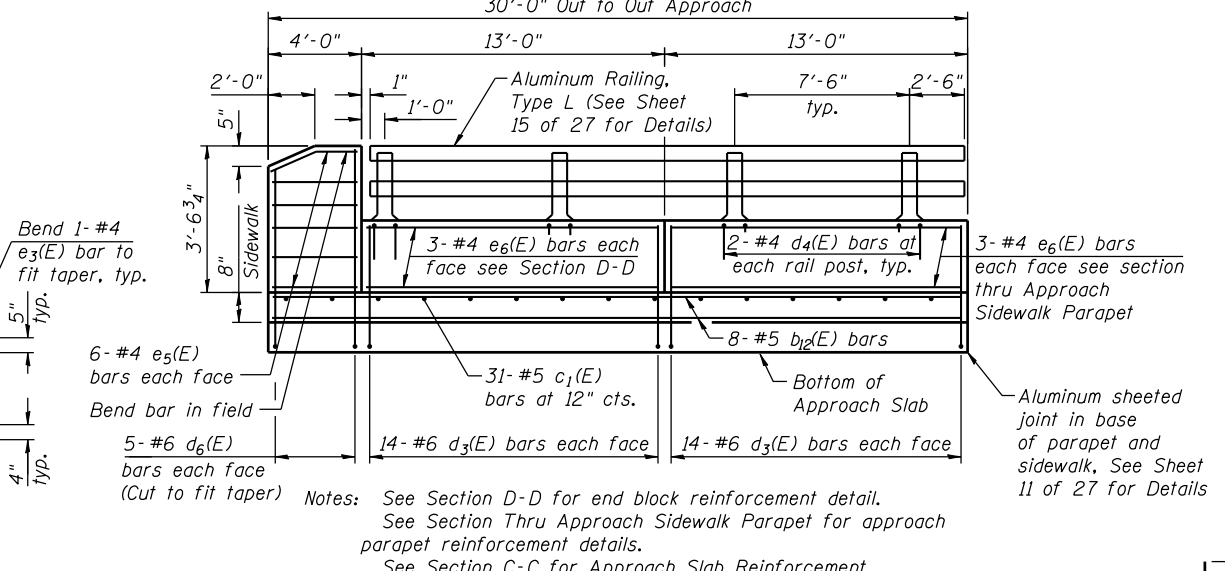
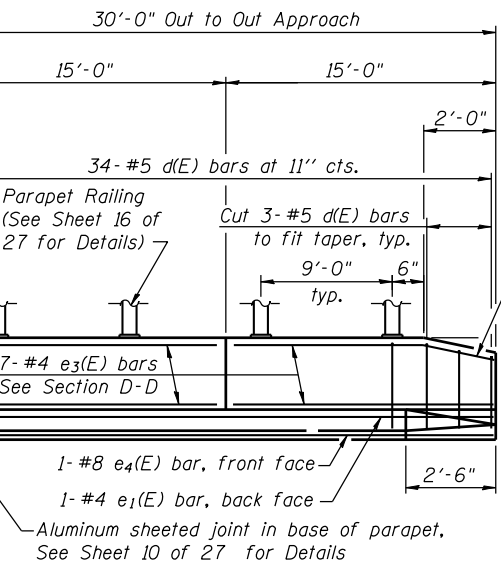


Notes:
 See sheet 13 of 27 for Detail A and View B-B.
 Approach Slab, Parapets, Median, and Sidewalk Concrete shall be paid for as Concrete Superstructure.
 Approach footing concrete shall be paid for as Concrete Structures.
 Reinforcement shall be paid for as Reinforcement Bars, Epoxy Coated.
 For v(E) bar details, see sheet 10 of 27.
 The approach footing maximum applied service bearing pressure (Qmax) = 2.0 ksf.
 For bar splicer details, see sheet 24 of 27.
 Cost of excavation for approach footing included with Concrete Structures.
 For Porous Granular Embankment (Special) and drainage treatment details, see sheet 2 of 27.
 End Block reinforcement shown in Section D-D. See Section Thru Approach Sidewalk Parapet for sidewalk parapet reinforcement.
 See sheets 10 and 11 of 27 for c(E), c3(E), d(E), d1(E), d3(E), and d4(E) bar bending diagrams.
 * Tilt #9 b1(E) bars as required to maintain clearance.
 ** Alternate with a0(E) bars.
 *** Cost included with Concrete Superstructure.



MIN. BAR LAP
 #4 bar = 2'-4"
TWO APPROACHES
BILL OF MATERIAL

Bar	No.	Size	Length	Shape	
a10(E)	50	#4	31'-8"	—	
a11(E)	92	#5	31'-3"	—	
a12(E)	50	#6	20'-1"	—	
a13(E)	50	#4	25'-8"	—	
a14(E)	100	#4	25'-0"	—	
a15(E)	276	#5	25'-3"	—	
b10(E)	144	#4	29'-8"	—	
b11(E)	422	#9	29'-9"	—	
b12(E)	46	#5	29'-8"	—	
c(E)	62	#5	2'-4"	—	
c1(E)	62	#5	5'-8"	—	
c2(E)	62	#5	13'-8"	—	
c3(E)	124	#5	1'-3"	—	
d(E)	68	#5	5'-7"	—	
d1(E)	68	#5	4'-8"	—	
d3(E)	112	#6	3'-9"	—	
d4(E)	16	#4	2'-0"	—	
d6(E)	20	#6	5'-9"	—	
e1(E)	2	#4	29'-8"	—	
e3(E)	28	#4	14'-7"	—	
e4(E)	2	#8	29'-8"	—	
e5(E)	24	#4	3'-8"	—	
e6(E)	24	#4	12'-8"	—	
t10(E)	364	#4	11'-3"	—	
w10(E)	80	#5	30'-6"	—	
w11(E)	240	#5	25'-2"	—	
Concrete Superstructure				Cu. Yd.	311
Concrete Structures				Cu. Yd.	64
Reinforcement Bars, Epoxy Coated				Pound	66,160
Reinforcement Bars, Epoxy Coated				Pound	11,590



STRAND ASSOCIATES, INC.
 ENGINEERS

1170 SOUTH HOUBOLT ROAD
 JOLIET, ILLINOIS 60431
 (815) 744-4200
 IDFPR NO. 184-001273

USER NAME = brianf
 DESIGNED KDH
 CHECKED AJS
 PLOT SCALE =
 DRAWN BJF
 CHECKED KDH
 PLOT DATE = 5/1/2012

DESIGNED KDH
 CHECKED AJS
 DRAWN BJF
 CHECKED KDH
 REVISED -
 REVISED -
 REVISED -
 REVISED -

STATE OF ILLINOIS
 DEPARTMENT OF TRANSPORTATION

BRIDGE APPROACH SLAB DETAILS (2 OF 2)
 STRUCTURE NO. 047-0301

SHEET NO. 14 OF 27 SHEETS

F.A.P. RTE.	SECTION	COUNTY	TOTAL SHEETS	SHEET NO.
349	11 WRS-3	KENDALL	527	302

CONTRACT NO. 60132
 ILLINOIS FED. AID PROJECT

****Included in Superstructure Quantity
 ****Included in Substructure Quantity

FILE NAME = s:\p1\6380--6395\6346\023\micro\sh\st\p1\0470301-60132-0008-BAP.dgn