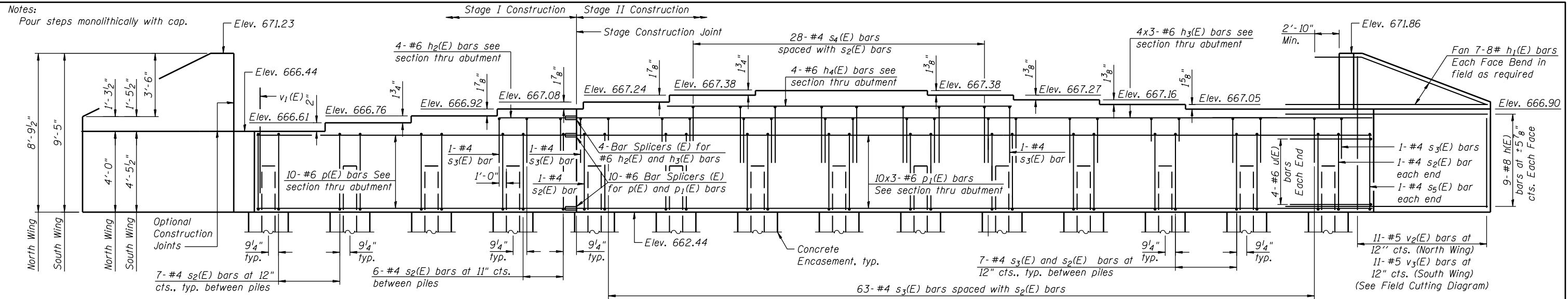


Notes:
Pour steps monolithically with cap.

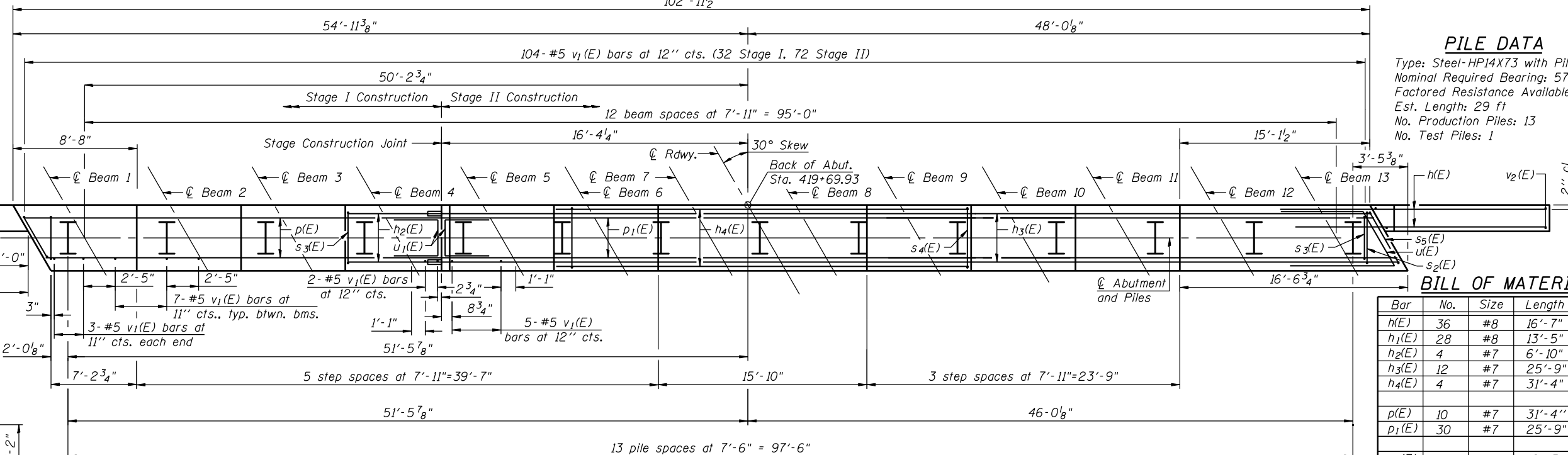


ELEVATION

(Looking East)

102'-11 1/2"

Notes:
Pile Encasement not shown in plan view for clarity.
For details of Bar Splicers, see sheet 24 of 27.
For details of piles and Concrete Encasement, see sheet 23 of 27.
Bars indicated thus 1x2-#5 etc. indicates 1 line of bars with 2 lengths per line.
Piles shall be driven through 2'-0" min. diameter precored holes extending to elevation 650.5 according to Article 512.09(c) of the Standard Specifications. Cost included in Driving Piles.



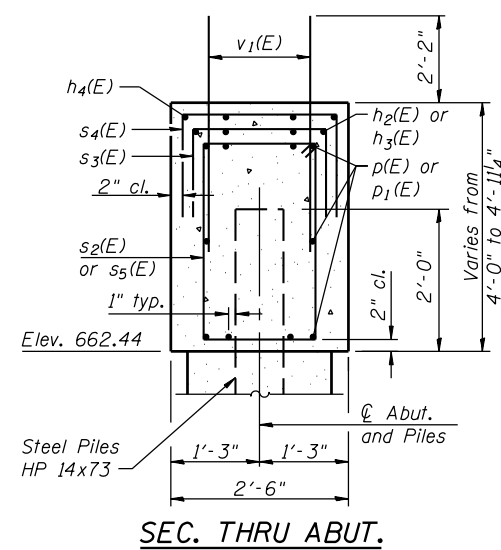
PILE DATA

Type: Steel-HP14x73 with Pile Shoes
Nominal Required Bearing: 578 kip
Factored Resistance Available: 318 kip
Est. Length: 29 ft
No. Production Piles: 13
No. Test Piles: 1

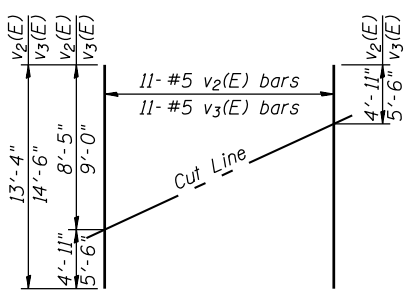
BILL OF MATERIAL

Bar	No.	Size	Length	Shape
h(E)	36	#8	16'-7"	—
h1(E)	28	#8	13'-5"	—
h2(E)	4	#7	6'-10"	—
h3(E)	12	#7	25'-9"	—
h4(E)	4	#7	31'-4"	—
p(E)	10	#7	31'-4"	—
p1(E)	30	#7	25'-9"	—
s2(E)	93	#4	12'-5"	□
s3(E)	72	#4	6'-10"	□
s4(E)	29	#4	7'-4"	□
s5(E)	2	#4	13'-3"	□
u(E)	8	#6	10'-2"	⌋
u1(E)	8	#6	9'-10"	⌋
v1(E)	194	#5	4'-4"	—
v2(E)	11	#5	13'-4"	—
v3(E)	11	#5	14'-6"	—
Structure Excavation			Cu. Yd.	216
Concrete Structures			Cu. Yd.	49
Concrete Encasement			Cu. Yd.	8
Reinforcement Bars, Epoxy Coated			Pound	8,460
Furnishing Steel Piles HP14x73			Foot	377
Driving Piles			Foot	377
Test Pile Steel HP14x73			Each	1
Pile Shoes			Each	14

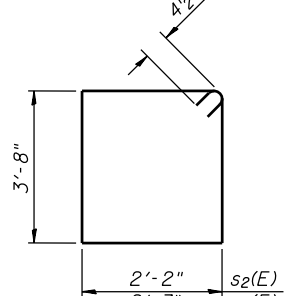
PLAN



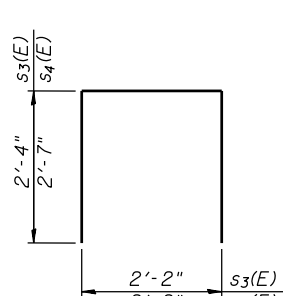
SEC. THRU ABUT.



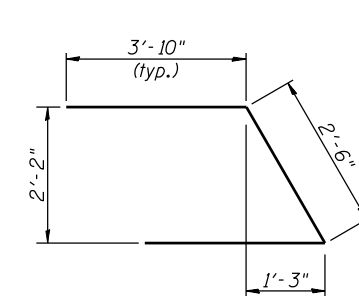
FIELD CUTTING DIAGRAM
Order v2(E) and v3(E) full length. Cut as shown and use remainder of bars in opposite face.



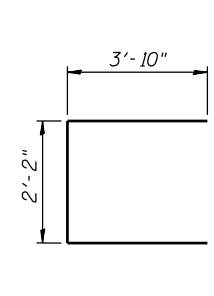
BARS s2(E) & s5(E)



BARS s3(E) & s4(E)



BAR u(E)



BAR u1(E)

FILE NAME = s:\p01\6380--6395\6346\023\micro\sh\str.plans\0470301-60132-01E-ABUT.dgn

STRAND ENGINEERS
1170 SOUTH HOUBOLT ROAD
JOLIET, ILLINOIS 60431
(815) 744-4200
IDFPR NO. 184-001273

USER NAME = briant
DESIGNED KDH
CHECKED AJS
DRAWN BJF
CHECKED KDH
PLOT SCALE =
PLOT DATE = 5/1/2012

REVISOR -
REVISOR -
REVISOR -
REVISOR -

STATE OF ILLINOIS
DEPARTMENT OF TRANSPORTATION

EAST ABUTMENT DETAILS
STRUCTURE NO. 047-0301
SHEET NO. 22 OF 27 SHEETS

F.A.P. RTE.	SECTION	COUNTY	TOTAL SHEETS	SHEET NO.
349	11 WRS-3	KENDALL	527	310

CONTRACT NO. 60132
ILLINOIS FED. AID PROJECT