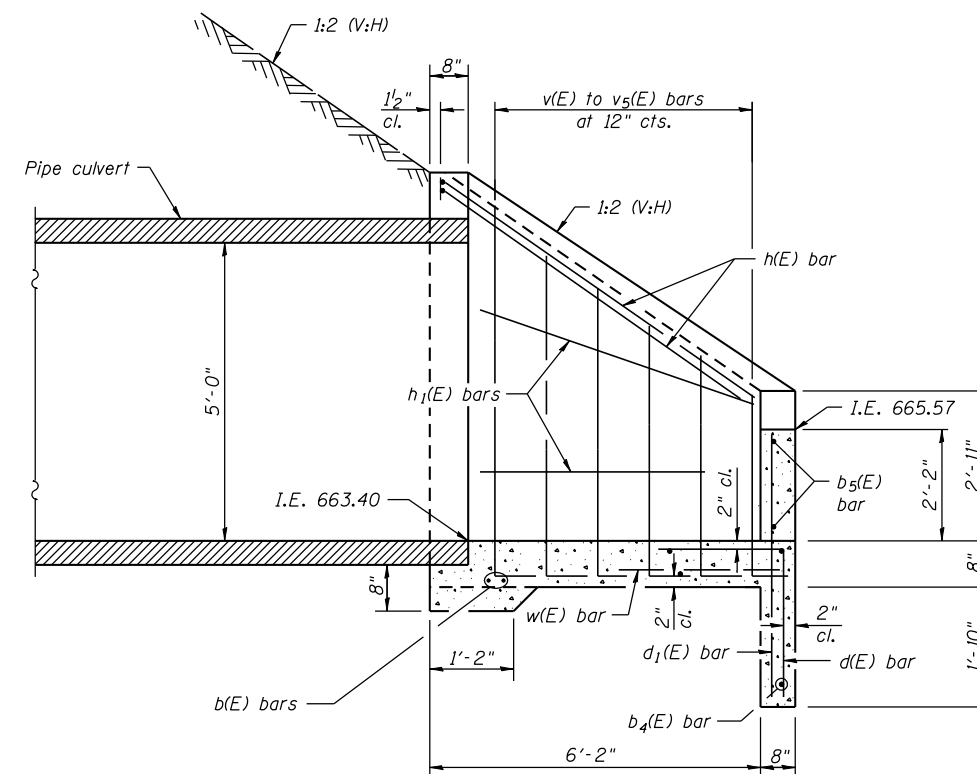
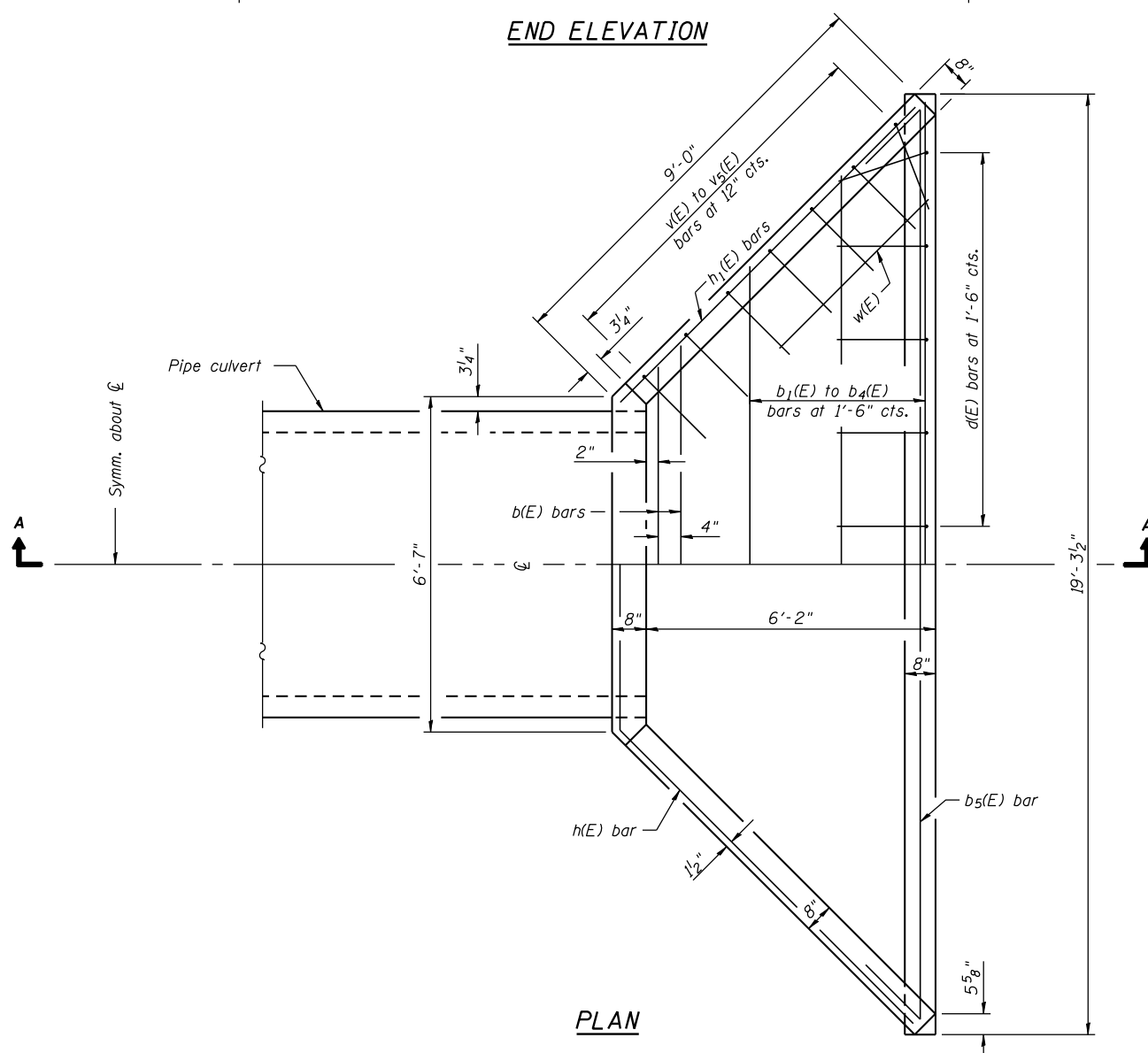


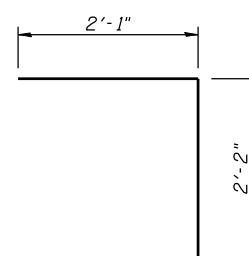
**END ELEVATION**



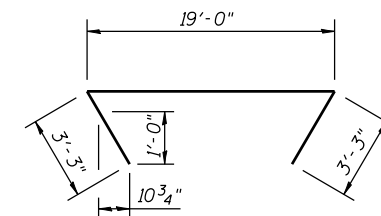
**SECTION A-A**



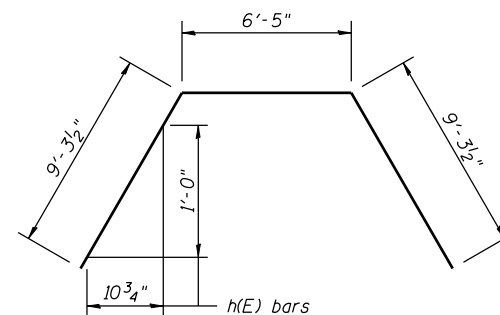
**PLAN**



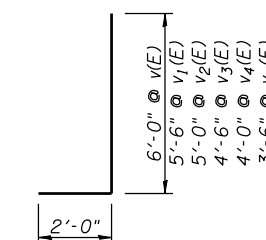
**d(E) BAR**



**b5(E) BAR**



**h(E) BAR**



**v(E) to v5(E) BARS**

**GENERAL NOTES**

All slope ratios are expressed as units of vertical displacement to units of horizontal displacement (V:H).

**BILL OF MATERIAL**

Bar	No.	Size	Length	Shape
b(E)	2	#5	8'-0"	—
b1(E)	1	#4	10'-6"	—
b2(E)	1	#4	13'-6"	—
b3(E)	1	#4	16'-6"	—
b4(E)	2	#4	19'-0"	—
b5(E)	2	#5	25'-6"	∩
d(E)	13	#4	4'-3"	└
d1(E)	13	#4	4'-4"	—
h(E)	2	#5	25'-0"	∩
h1(E)	4	#4	8'-9"	U
v(E)	4	#5	8'-0"	└
v1(E)	2	#5	7'-6"	└
v2(E)	2	#5	7'-0"	└
v3(E)	4	#5	6'-6"	└
v4(E)	2	#5	6'-0"	└
v5(E)	4	#5	5'-6"	└
w(E)	2	#4	4'-0"	—
Reinforcement Bars, Epoxy Coated			Pound	406
Concrete Substructure			Cu. Yd.	7

FILE NAME = s:\p1\6380-6395\6346\023\micro\sh\str.plans\0470301-60132-021-PIPECUL.dgn

**STRAND**  
ASSOCIATES, INC.  
ENGINEERS  
1170 SOUTH HOUBOLT ROAD  
JOLIET, ILLINOIS 60431  
(815) 744-4200  
IDFPR NO. 184-001273

USER NAME = brianf  
DESIGNED *KDH*  
CHECKED *AJS*  
DRAWN *BJF*  
CHECKED *KDH*  
PLOT SCALE =  
PLOT DATE = 5/1/2012

DESIGNED *KDH*  
CHECKED *AJS*  
DRAWN *BJF*  
CHECKED *KDH*

REVISED -  
REVISED -  
REVISED -  
REVISED -

**STATE OF ILLINOIS  
DEPARTMENT OF TRANSPORTATION**

**CAST-IN-PLACE REINFORCED CONCRETE END SECTION 60" (SPECIAL)  
FOR STORM SEWER AT STA. 344+25.00**

SHEET NO. 1 OF 1 SHEETS

F.A.P. RTE.	SECTION	COUNTY	TOTAL SHEETS	SHEET NO.
349	11 WRS-3	KENDALL	527	316
CONTRACT NO. 60132				
ILLINOIS FED. AID PROJECT				