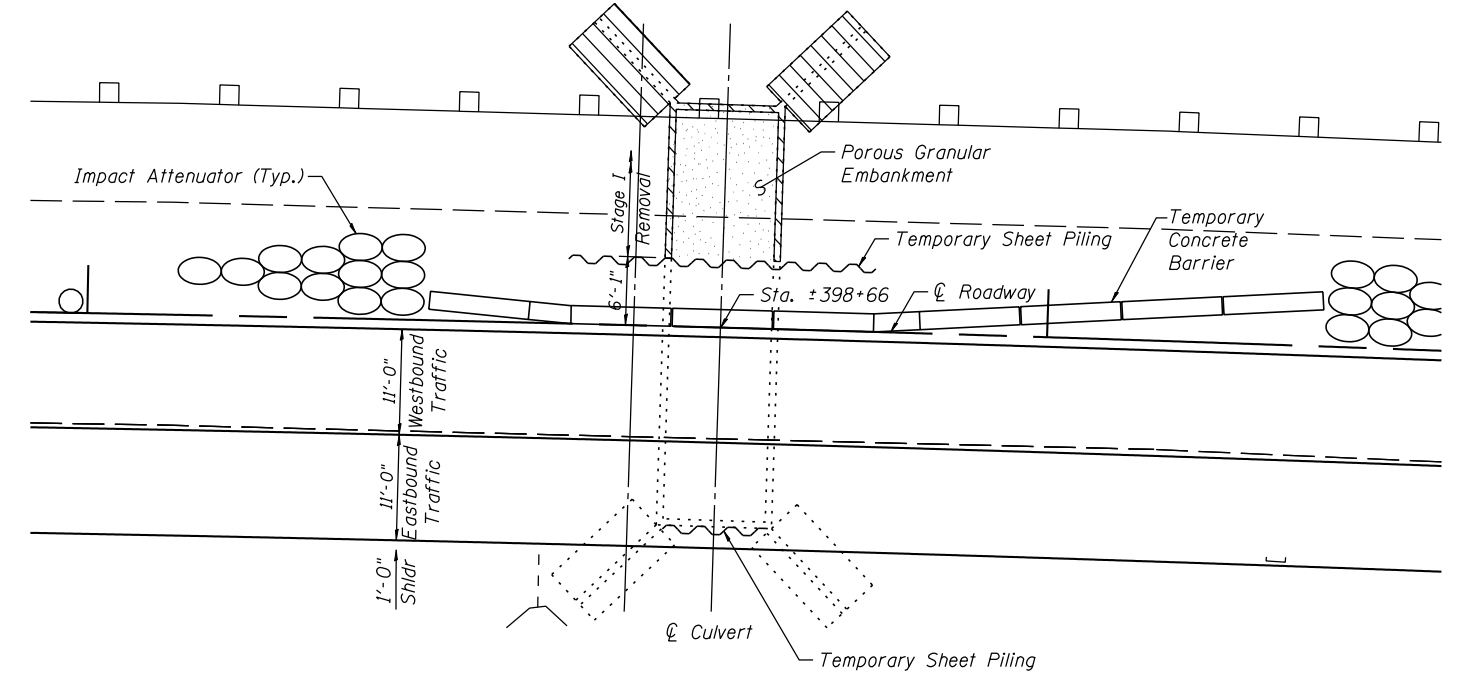
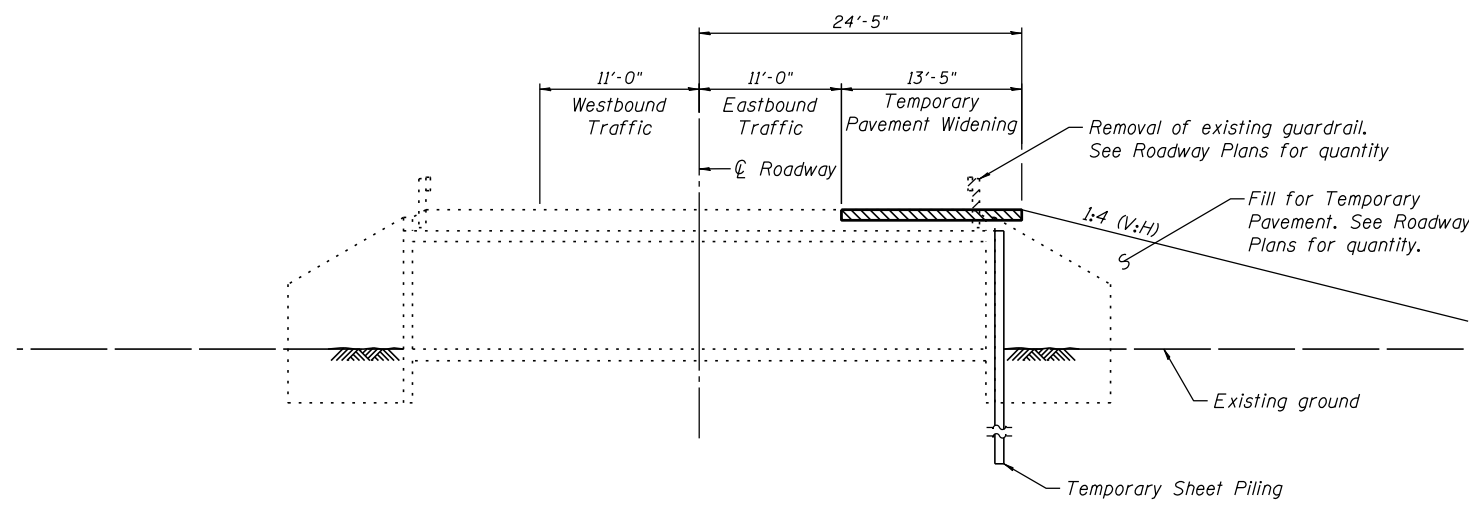


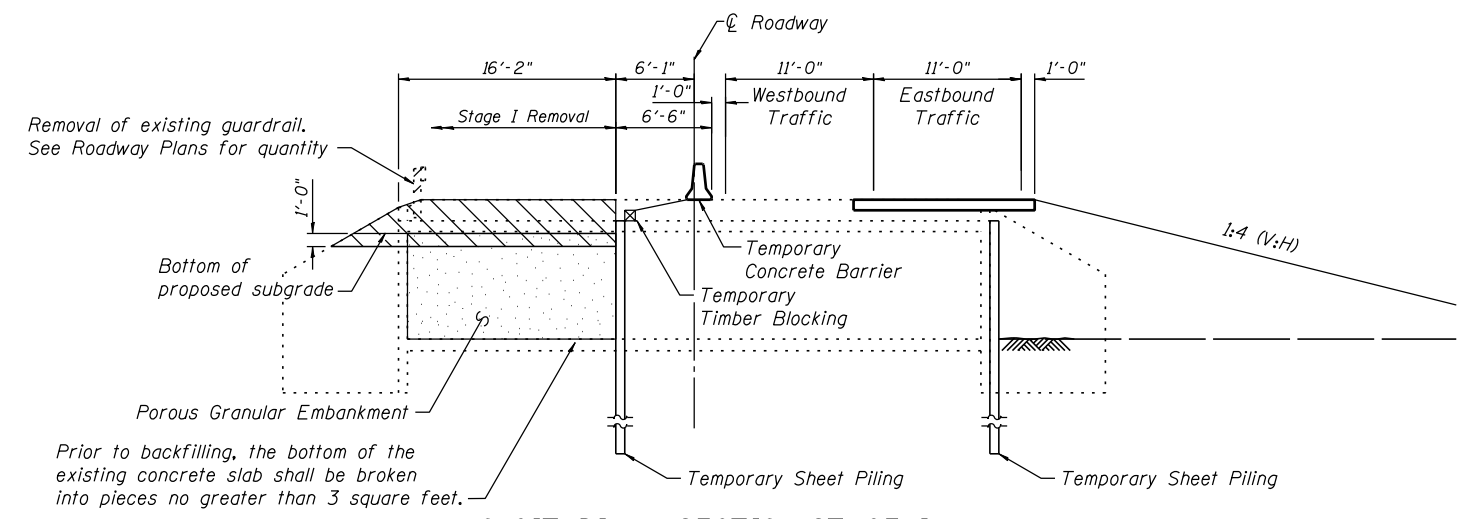
PLAN - PRE-STAGE



PLAN - STAGE I



LONGITUDINAL SECTION PRE-STAGE



LONGITUDINAL SECTION STAGE I

LEGEND

- Temporary Pavement
- Proposed Pavement Construction this Stage
- Removal

Note:
See MOT plans for limits of fill for temporary pavement.
See sheet 3 of 4 for temporary sheet piling details.

FILE NAME = S:\JOL\63300-6399\6346\023\Micro\Sh\Str\Plans\Cattle Pass\0470301-60132-001-CUL.dgn



1170 SOUTH HOUBOLT ROAD JOLIET, ILLINOIS 60431 (815) 744-4200	USER NAME = amanda_j	DESIGNED KJL	REVISED - 5/17/12
		CHECKED RRD	REVISED -
	PLOT SCALE =	DRAWN BJF	REVISED -
	PLOT DATE = 6/5/2012	CHECKED KJL	REVISED -

STATE OF ILLINOIS
DEPARTMENT OF TRANSPORTATION

CATTLE PASS REMOVAL DETAILS
PRE-STAGE & STAGE I

SHEET NO. 1 OF 4 SHEETS

F.A.U. RTE.	SECTION	COUNTY	TOTAL SHEETS	SHEET NO.
349	11 WRS-3	KENDALL	527	317
CONTRACT NO. 60132			ILLINOIS FED. AID PROJECT	