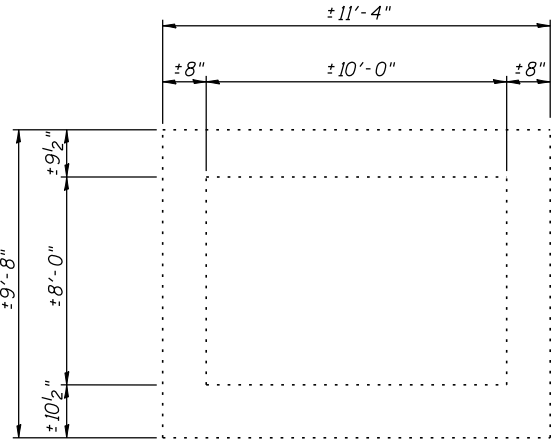
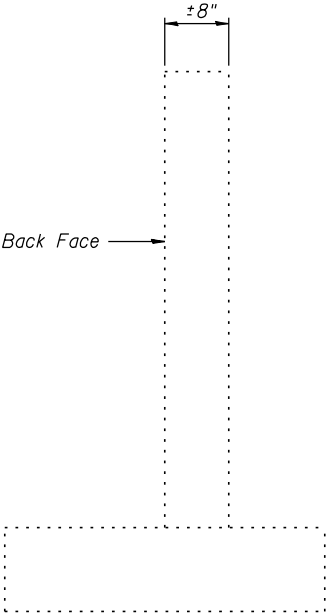
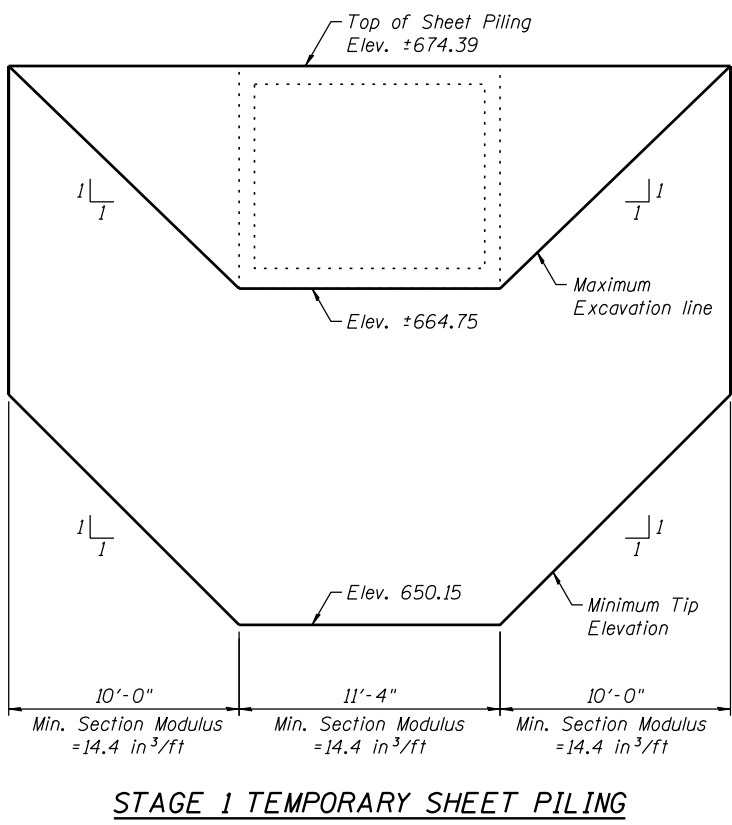
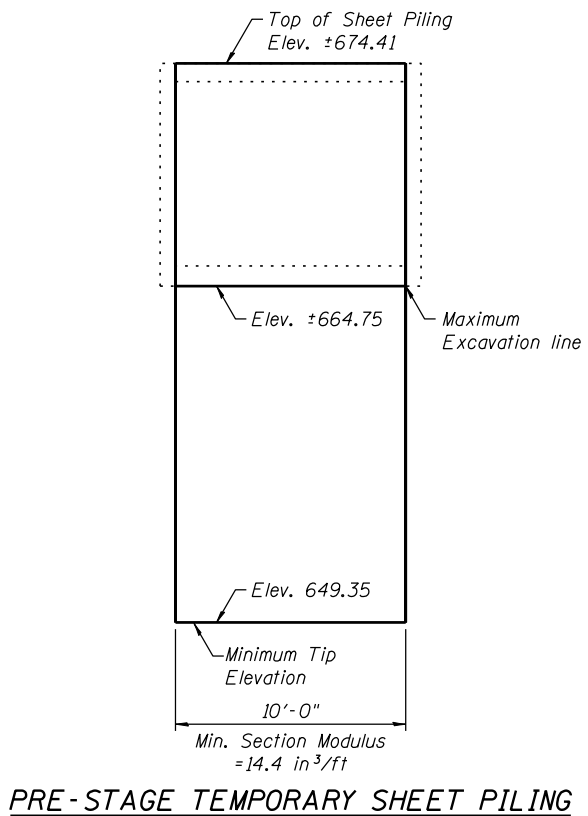


GENERAL NOTES

For quantity of temporary concrete barrier, see Roadway Plans.
 All longitudinal sections are looking east.
 Plan dimensions and details relative to existing plans are subject to nominal construction variations. The contractor shall field verify existing dimensions and details affecting new construction and make necessary approved adjustments prior to construction or ordering of materials. Such variations shall not be cause for additional compensation for a change in the scope of the work. However, the contractor will be paid for the quantity actually furnished at the unit price bid for the work.
 See Roadway Plans for proposed pavement construction.
 If the contractor chooses to alter the temporary cantilevered sheet piling design requirements shown on the plans, a design submittal including plan details and calculations will be required for review and acceptance by the Engineer.
 The contractor shall connect the first sheet to the existing wing wall to ensure stability of sheets driven to the top of the existing footing. This connection shall be reviewed and accepted by the Engineer and included in the cost for Temporary Sheet Piling.

BILL OF MATERIAL

ITEM	Unit	TOTAL
Porous Granular Embankment	Cu. Yd.	180
Removal of Existing Structures, No. 2	Each	1
Temporary Sheet Piling	Sq. Ft.	914



FILE NAME = s:\p\16380--6395\6346\023\Micros\Sht\Sr Plans\Cattle Pass\0470301-60132-003-SHEET.DET.dgn

STRAND ASSOCIATES, INC. ENGINEERS
 1170 SOUTH HOUBOLT ROAD
 JOLIET, ILLINOIS 60431
 (815) 744-4200

USER NAME = brianf	DESIGNED KJL	REVISED -
	CHECKED RRD	REVISED -
PLOT SCALE =	DRAWN BJF	REVISED -
PLOT DATE = 5/1/2012	CHECKED KJL	REVISED -

STATE OF ILLINOIS DEPARTMENT OF TRANSPORTATION

CATTLE PASS REMOVAL DETAILS

SHEET NO. 3 OF 4 SHEETS

F.A.U. RTE.	SECTION	COUNTY	TOTAL SHEETS	SHEET NO.
349	11 WRS-3	KENDALL	527	319
ILLINOIS FED. AID PROJECT			CONTRACT NO. 60132	