

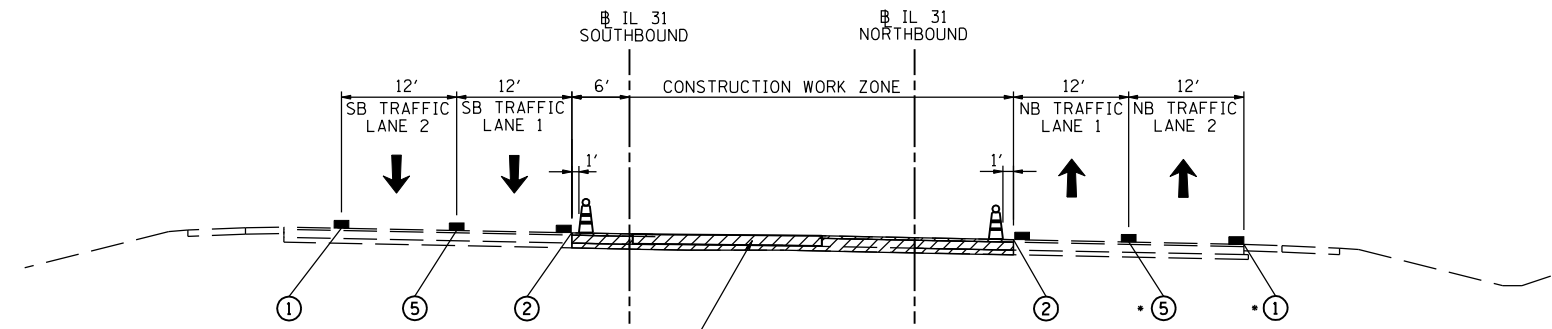
TEMPORARY PAVEMENT CONSISTS OF
2" HMA SURFACE COURSE
8" HMA BINDER COURSE

MAINTENANCE OF TRAFFIC - STAGE 1
US 30

STA. 1250+00
(LOOKING EAST)

LEGEND:

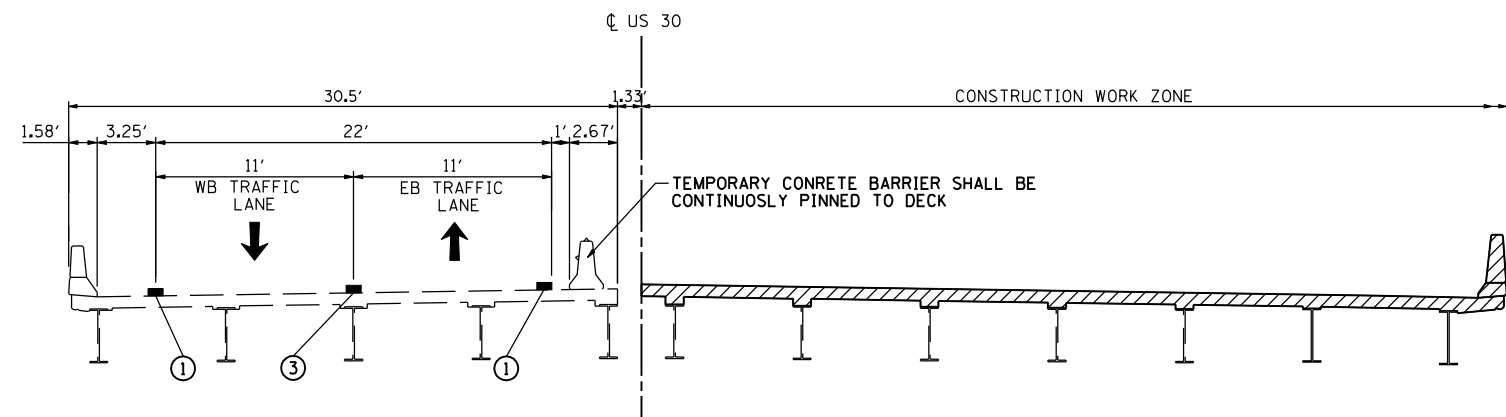
- AREA OF PROPOSED CONSTRUCTION
- DRUM WITH BIDIRECTIONAL STEADY BURN LIGHT ON 2-LANE ROADWAYS AND MONODIRECTIONAL ON MULTILANE ROADWAYS
- DOUBLE VERTICAL PANEL (ONE PANEL ON EACH SIDE OF POST) WITH BIDIRECTIONAL STEADY BURN LIGHT
- TEMPORARY CONCRETE BARRIER WITH TYPE C MARKERS PER STANDARD 704001
- PAVEMENT MARKING:
- ① 4" SOLID WHITE LINE
- ② 4" SOLID YELLOW LINE
- ③ 2-4" SOLID YELLOW LINE @ 11" C-C WITH YELLOW TEMPORARY RAISED REFLECTIVE PAVEMENT MARKERS AT 40' CENTERS (TYP.)
- ④ 6" SOLID WHITE LINE
- ⑤ 4" WHITE (SKIP DASH) 10' LINE - 30' SPACE
- EXISTING PAVEMENT MARKING



TEMPORARY PAVEMENT CONSISTS OF
2" HMA SURFACE COURSE
8" HMA BINDER COURSE

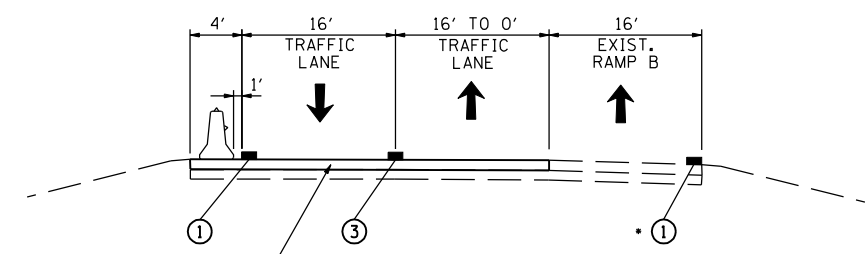
MAINTENANCE OF TRAFFIC - STAGE 1
IL 31

STA. 108+00
(LOOKING NORTH)



MAINTENANCE OF TRAFFIC - STAGE 1
US 30

STA. 1271+00
(LOOKING EAST)



TEMPORARY PAVEMENT CONSISTS OF
2" HMA SURFACE COURSE
8" HMA BINDER COURSE

MAINTENANCE OF TRAFFIC - STAGE 1
TEMPORARY PAVEMENT
RAMP A AND RAMP B

140' OFF US 30 CL
(LOOKING NORTH)

P:\jobs\2010\20103003\cadd\site\vdgn\00\0160133-sht-mot-typical-01.dgn
 8/8/2012 2:01:32 PM

USER NAME = 1654	DESIGNED - JWB	REVISED -
PLOT SCALE = 20.0000' / IN.	DRAWN - JWB	REVISED -
PLOT DATE = 8/8/2012	CHECKED - RS	REVISED -
	DATE - 06/15/2012	REVISED -

F.A.P. RTE.	SECTION	COUNTY	TOTAL SHEETS	SHEET NO.
349	(10 & 11 VB) R-3	-	507	89
• KANE AND KENDALL			CONTRACT NO. 60133	
ILLINOIS FED. AID PROJECT				